

LONGFORD COUNTY COUNCIL
Claran Murphy
Acting Director of Services
Infrastructure and
Environment Directorate
Longford County Council
Great Water Street
Longford

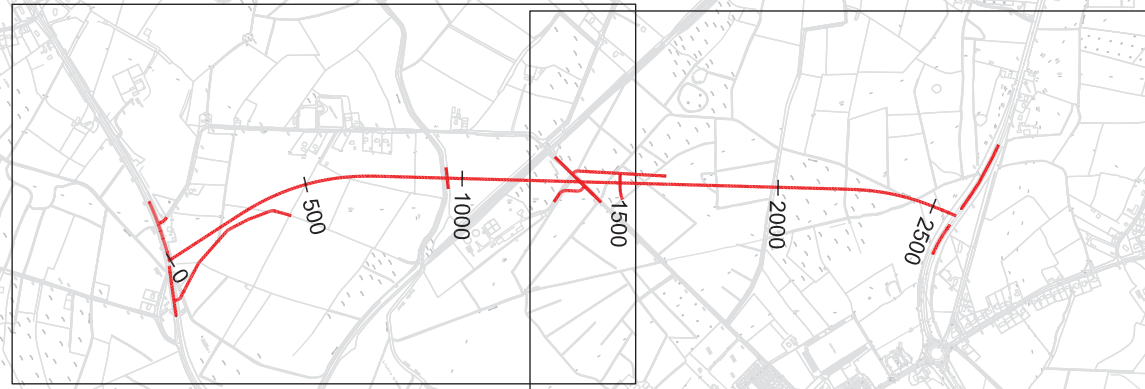


**NATIONAL
ROADS
DESIGN
OFFICE**
ROSCOMMON
Racecourse Rd
Roscommon



Rev	By	Date	Description

Project: N5 Longford Bypass Road Project				
Component: Design Build Contract				
Title: Location of the Scheme				
Designed: JH	Date: Sept 2010	File Name: N5 - Longford Bypass Road Project	Drawing No:	
Drawn: MH	Date: Sept 2010	Original Scale: N.T.S.		
Checked: PN	Date: Sept 2010	Date: Sept 2010		



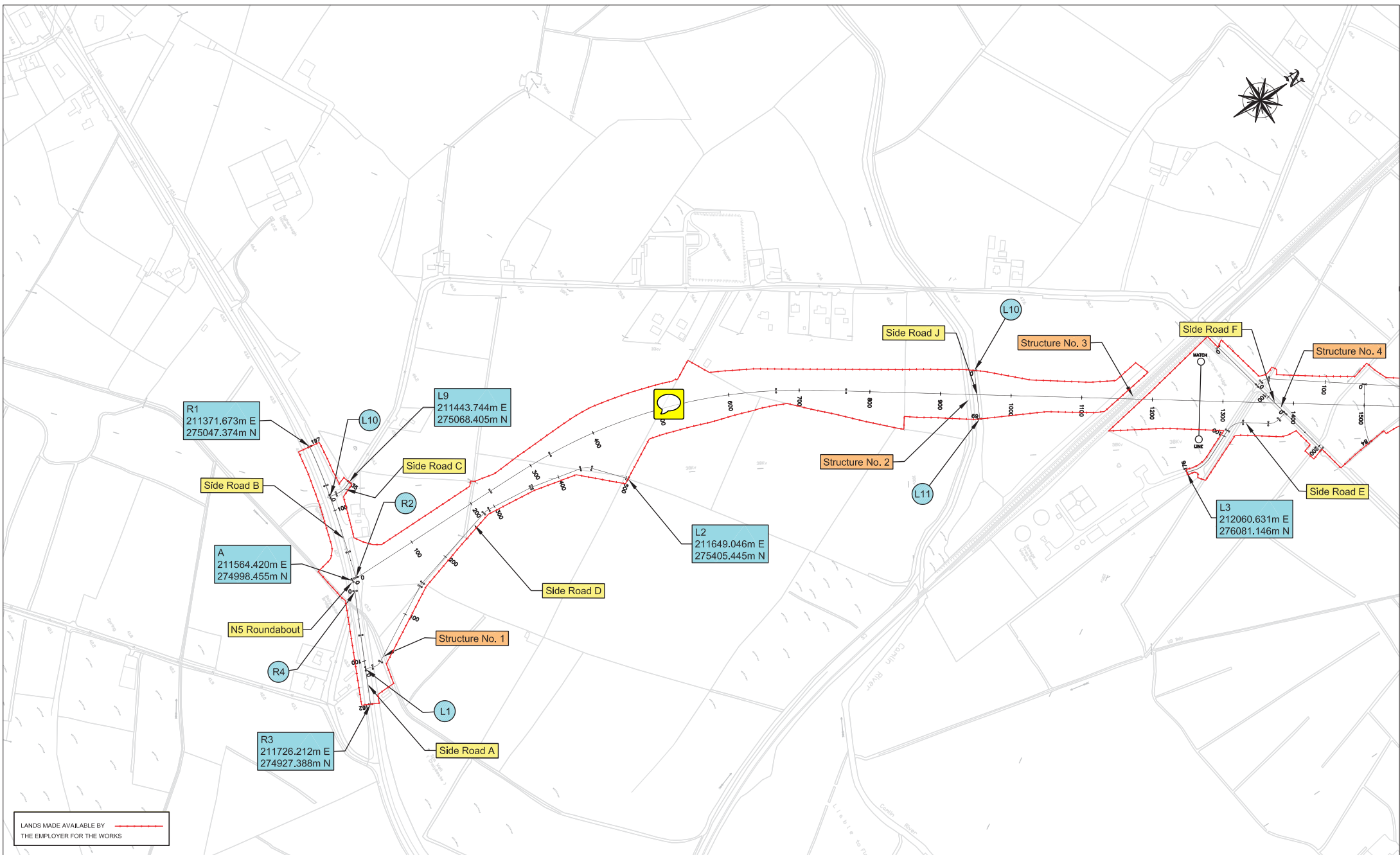
Sheet 1 of 2

Sheet 2 of 2

1:5,000 LAYOUT SCHEME APPLIES TO THE FOLLOWING DRAWING SETS:
- REFERENCES AND CO-ORDINATES OF THE DESIGN AND THE WORKS
- LANDS MADE AVAILABLE BY THE EMPLOYER FOR THE WORKS

Rev	By	Date	Description
B	JF	26/10/10	Revision B
C	MH	10/11/10	Revision C

Project: N5 Longford Bypass Road Project				
Component: Design Build Contract				
Title: Sheet Layout for 1:5,000 Drawings				
Designed: MH	Date: Sept 2010	File Name: 1001140-04-662.dwg	Drawing No:	Rev:
Drawn: MH	Date: Sept 2010	Original Scale: N.T.S	LD01140-04-662	C
Checked: PN	Date: Sept 2010	Date: Sept 2010		



LANDS MADE AVAILABLE BY
THE EMPLOYER FOR THE WORKS

Rev	By	Date	Description
A	JF	11/10/10	Revision A
B	MH	28/10/10	Revision B
C	MH	10/11/10	Revision C
D	MH	23/11/10	Revision D

Project: N5 Longford Bypass Road Project			
Component: Design Build Contract			
Title: References and Co-ordinates of the Design and Works (Sheet 1 of 2)			
Designed: MH	Date: Sept 2010	File Name: 1071140-04-663.dwg	Drawing No: LD01140-04-663
Drawn: MH	Date: Sept 2010	Original Scale: 1:5000	Rev: D
Checked: PH	Date: Sept 2010	Date: Sept 2010	

