

# Longford County Council

## Winter Service Plan 2016

### Introduction

• Longford County Council is responsible for the maintenance of over 1600km of National , Regional and Local Roads throughout the County .

• The term ‘Winter Service’ relates to those activities undertaken by Longford County Council to minimise the impact of frost, ice or snow on the travelling public. Winter service is not an emergency service in that low temperatures, frost, ice and snow are frequent and reasonably predictable occurrences.

• This Winter Service Plan provides the framework for dealing with winter weather conditions on the roads and provides for a planned and co-ordinated response by Longford County Council.

The Plan takes cognisance of the guidance and best practices provided by the National Roads Authority (NRA) in the Winter Service Manual which it issued in draft format ahead of the 2010/2011 winter season.

• The Winter Service Period is usually from the middle of October to the middle of April.

• A review and update of Winter Service Operations is undertaken each year before the start of the next Winter Season.

• The objective of the winter maintenance programme is to provide so far as is reasonably practical for the safe movement of road users on the National Roads and other strategic routes identified during adverse weather conditions.

• As it not feasible to treat all public thoroughfares, it is necessary to create a schedule of route prioritisation. Routes are designated a priority rating of between 1 and 3 based upon the road classification, the traffic volume carried, public transport usage etc and the importance of the route on a national, regional or local level.

• Priority 1 Routes ( National ) and Priority 2 Routes Regional & some Local Roads are pre-salted. They receive precautionary treatment, where salt is spread following warnings of expected low temperatures, in order to reduce the likelihood of frost and ice forming on the road.

• Priority 3 routes are post-salted as resources allow. This is a response based service where routes are treated during normal working hours if they become impassable and where resources are available.

Footpaths are not generally salted by Longford County Council . However during prolonged periods of severe weather footpaths may be salted subject to available resources .

### A1 Document Control

Revision	Status	Revision Details	Date
A	Final	Minor Alterations to the Winter Service Plan 2014	9/10/15

### A2 Approval List

Role	Name	Signature	Date
Author	E. Bennett, SEE		9/10/15
Checker	David Tubridy, SE		9/10/15
Winter Service Manager	Eamon Bennett, SEE		9/10/15
Director of Services for Transportation	John Brannigan, DOS		9/10/15

### A3 *Distribution List*

ISSUED TO	ORGANISATION	LOCATION
DUTY ENGINEERS	LONGFORD CO. CO.	LONGFORD
WINTER SERVICE SUPERVISORS		LONGFORD
DRUMLISH AREA	LONGFORD CO. CO.	ESKER
GRANARD AREA	LONGFORD CO. CO.	GRANARD
LONGFORD AREA	LONGFORD CO. CO.	BALLAGH
BALLYMAHON AREA	LONGFORD CO. CO.	TOOME
HEALTH & SAFETY OFFICER	LONGFORD CO. CO. DEPT OF TRANSPORT	LONGFORD
WINTER MAINT'CE MANAGER	NRA	DUBLIN
<b><u>SENIOR ENGINEER</u></b>		
SHAY O'CONNOR	LEITRIM CO. CO.	CARRICK ON SHANNON
BRENDAN JENNINGS	CAVAN CO. CO.	CAVAN
EUGENE DWYER	ROSCOMMON CO. CO.	ROSCOMMON
MICHAEL CONNOLLY	WESTMEATH CO. CO.	MULLINGAR
DAVID TUBRIDY	LONGFORD CO.CO	LONGFORD
HEAD OF FORECASTING	MET ÉIREANN	GLASNEVIN, DUBLIN

### A4 *Purpose and Scope*

*“The purpose of this document is to identify the processes, procedures and key personnel employed by Longford County Council, to deliver the winter service for County Longford”*

### A5 *Policy*

During winter months LCC monitor road conditions and in the event of frost and snow LCC implement a winter gritting programme based on an agreed priority schedule.

ROUTE DESIGNATION	DESCRIPTION	LEVEL OF SERVICE
<b>Priority 1</b>	N4 N5 N55 N63	Road to be treated during all weather events  - (106 km)
<b>Priority 2</b>	R-194 R-198 R-395 R-392 R-393 R-396 R-397 R-398 R-399 L-1051 L-1048 L-1066 L-1042 L-1029 L-1057 L-1028 L-1155 L-1050 L-1099 L-1096 L-5196 L-1098 L-5187 L-1108 L-1150 L-1127 L-1118 L-1091 L-1086 L-1122 L-1103 L-1147 L-1056 L-1042 L-5187 L-1065 L-1027 L-1100 L-1053 L-1044 L-1050 L-1040 L-1032 L-3001 L-3002 L-3003 L-3004 L-3005 L-3006 L-3007 L-3008 L-3014 L-3015 L-3017 L-3018 L-30033 L-7001 L-7003 L-7008 L-7009 L-70095 L-70097 L-70098 L-7011 L-7012 L-7013	Roads to be treated as part of the normal winter service but may have interruptions to treatment in certain severe weather events or due to budgetary constraints  - Regional Roads – (155km )  - Selected Local Roads – ( 104 km )  Note: The length of some Local roads listed here may only be partially treated. See maps in appendix for greater detail of roads treated.
<b>Priority 3</b>	Routes that can be kept serviceable once Priority 1 & Priority 2 routes have been treated if resources allow	Not treated as part of the normal winter service but may receive intermittent treatment during certain severe weather events

Treatment Route	Priority 1	Priority 2	Priority 3
Mobilisation Time	1 hr	1 hr	1hr
Treatment Time	2-3 hr	2-4 hrs	6-8 hrs

## A6 Overall Maps of the Service Plan Area

See attached Priority Salting Route Maps – Appendix 1

## A7 Rosters

- Longford County Council does not operate a roster system for drivers but reserve drivers available .
- Duty Engineers are on a roster system.

<b>ROLE</b>	<b>NAME</b>	<b>ROUTE DESIGNATION</b>	<b>ROUTE SALTED</b>
Duty Engineer	E Bennett, SEE		
Duty Engineer	David McNiff,		
Duty Engineer	Aidan Naughton, AE		
Driver	G DAVIS	PRIORITY 2 & 3	R392, R397, R398 L1155, L1147, L1150
Driver	P FINNAN	PRIORITY 1 & 2	N55, R399, R393, L5187, L1103, L1099, L5187, L1096
Driver	P BURKE	PRIORITY 1 & 2	N4,N5, R393, L1098, L1100
Driver	T MOLLAGHAN	PRIORITY 1 & 2	N5,N63, R-194, L-5196, L-1108, L-1118, L-1122, L1127, L-1040
Driver	T DUFFY	PRIORITY 2 & 3	R194, R198, L1028, L1027, L1042,L1029, L1044, L1048, L1051, L1053, L-1032
Driver	M NEILON	PRIORITY 2 & 3	R194, R395, R396, L-1056, L-1065, L-1086, L-1091, L-1066, L-1057, L-1050
Driver	N.NORTON	PRIORITY 2 & 3	L-3001,L-3002, L-3003, L-3004 L-3005, L-3006, L-3007, L-3008 L- 3014, L-3015, L-3017, L-3018, L-30033, L-7001, L-7003, L-7008 L-7009, L-7011, L-7012, L-7013 L-70095, L-70097, L-70098, R-198, R-393

General Service Supervisors are available on a rostered basis to deal with emergency calls .

**A8 Contact Details**

<b>CONTACT:</b>	
<b>Technical support for Bureau Weather Service</b>	Met Éireann Headquarters Glasnevin Hill Dublin 9, Ireland
<b>Garda Stations (24 hour No.)</b>	Garda Station, Longford (043) 3350570 Garda Station, Granard (043) 6687660 Garda Station, Ballymahon (09064) 32303 Garda Control, Mullingar (044) 93 84000 Garda Control, Athlone (09064) 98550 Garda Control, Carrick-on-Shannon (071) 9650510
<b>Duty Engineers (Longford County Council)</b> <b>Eamon Bennett</b> <b>David Mc Niff</b> <b>Aidan Naughton</b>	<b>Out of Hours Emergency No 1850211525</b>
<b>Leitrim Duty Engineer</b>	SHAY O'CONNOR
<b>Cavan Duty Engineer</b>	BRENDAN JENNINGS
<b>Westmeath Duty Engineer</b>	MICHAEL CONNOLLY
<b>Roscommon Duty Engineer</b>	EUGENE DWYER
<b>Ambulance</b>	Ambulance Control, Longford 999/112 (043) 3346211 Mullingar General Hospital (044) 9340221
<b>Fire Department, Longford</b>	Declan Kilcline, Chief Fire Officer Ph: (043) 3347136 Fax:(043) 3341985 Marie Lough, Asst. C.F.O. Ph:(043) 3347136 Fax:(043) 3341985  Tomas O'Maonaigh, Asst. C.F.O. Ph: (043) 3347136 Fax: (043) 3341985 Emergency Phones No.'s 999/112

**WINTER SERVICE PLAN RESOURCES**

STAFF
Staffing for National & Local Roads winter gritting – 1 depot with 2 men for teleporter duties and 6 drivers for gritting duties.
<b>EMERGENCY NO: 999/112</b>

PLANT
7 Trucks
6 Truck mounted demountable Stainless Steel Gritters
1 Truck mounted demountable Stainless Steel Gritter
3 Snow Ploughs
1 Teleporter
<b>OFFICE NO: (043) 3346231</b>

**ADDITIONAL RESOURCES - NORTH AREA**

STAFF
Remainder of normal Staffing – 18 men, 2 GSS and 2 technical staff. 1 GSS is on call.

PLANT
4 Pickup Trucks with crew cabs
2 20 Tonne trucks
4 JCBs
<b>OFFICE NO: (043) 3346231</b>

**ADDITIONAL RESOURCES - SOUTH AREA**

STAFF
Remainder of normal Staffing - 13 men, 2 G.S.S and 2 technical staff. 1 GSS is on call.

PLANT
4 Pickup trucks with crew cabs
2 JCBs
<b>OFFICE NO: (043) 3346231</b>

## ADDITIONAL RESOURCES - MID AREA

STAFF	PLANT
Remainder of normal Staffing – 13 men,  2 G.S.S and 2 technical staff. 1 GSS is on call.	4 Pickup trucks with crew cabs  1 JCB, 1 excavator
	<b>OFFICE NO: (043) 3346231</b>

### *A10 Decision Matrix*

The following table is the decision matrix guideline that the duty Engineers will refer to.

Road Surface Temperature	Precipitation	Predicted Road Conditions		
		Wet	Wet Patches	Dry
May fall below 1°C	No rain No hoar frost No fog	Salt before frost	Salt before frost (see note a)	No action likely, monitor weather (see note a)
Expected to fall below 1°C	No rain No hoar frost No fog		Salt before frost (see note b)	
	Expected hoar frost Expected fog			
	Expected rain before freezing	Salt after rain stops (see note c)		
	Expected rain during freezing	Salt before frost, as required during rain and after rain stops (see note d)		
	Possible rain Possible hoar frost Possible fog	Salt before frost	Monitor weather conditions	
Expected Snow		Salt before snow fall		
The decision to undertake precautionary treatments should be, if appropriate, adjusted to take account of residual salt or surface moisture.				
All decisions should be evidence based, recorded and require careful monitoring and review.				

#### **Notes:**

- (a) Particular attention should be given to the possibility of water running across carriageways and other running surfaces e.g. surface water off adjacent fields after heavy rains, washing off salt previously deposited. Such locations should be closely monitored and may require treating in the evening and morning and possible other occasions. Ideally the source of the run-off should be diverted from the roadway.

- (b) When a weather warning contains reference to expected hoar frost, considerable deposits of frost can occur. Hoar frost usually occurs in the early morning and is difficult to cater for because of the probability that any salt deposited on a dry road too soon before its onset, may be dispersed before it can become effective. Careful monitoring is required under this forecast condition which should ideally be treated just as the hoar frost is forming. Such action is usually not practicable and salt may have to be deposited on a dry road prior to but as close as possible to the expected time of the condition. Hoar frost may also be forecast at other times of the day, in which case the timing of salting operations should be adjusted accordingly.
- (c) If under these conditions, rain has not ceased by early morning, crews should be called out and action initiated as rain ceases.
- (d) Under these circumstances rain will freeze on contact with running surfaces and full precautionary treatment should be provided even on dry roads. This is a most serious condition and should be monitored closely and carefully throughout the danger period.

**A11 Treatment Matrix**

The following table is the guideline for spreading dry unmodified salt which the Duty Engineers will refer to.

**Treatment Matrix Guide for Dry Unmodified Salt**

Weather Conditions Road Surface Conditions Road Surface Temperature (RST)	Treatment		
	Air Temperature	Salt Spread Rate (gm/m <sup>2</sup> )	Ploughing
Frost or forecast frost RST at or above -2°C		20 Also refer to Notes (b) & (e)	No
Frost or forecast frost RST below -2°C and above -5°C		20	No
Frost or forecast frost RST below -5°C and above -10°C and dry or damp road conditions		20	No
Frost or forecast frost RST below -5°C and above -10°C and wet road conditions (existing or anticipated)		2 runs X 20	No
Light snow forecast (<10mm)		20	No



<b>Weather Conditions</b>	<b>Treatment</b>		
<b>Road Surface Conditions</b>	<b>Air</b>	<b>Salt Spread Rate</b>	<b>Ploughing</b>
<b>Road Surface Temperature (RST)</b>	<b>Temperature</b>	<b>(gm/m<sup>2</sup>)</b>	
Forecast for Medium/heavy snow or a freezing rain forecast		2 runs X 20	No
Ice formed	Above -5°C	20	Not possible
Ice formed	At or below -5°C	2 runs X 20	Not possible
Snow covering exceeding 30mm		20 to supplement ploughing, up to 40 if temperatures are falling	Required
Snow accumulations due to prolonged falls		20 to 40 to supplement ploughing	Required
Hard packed snow/ice	Above -8°C	Successive treatments at 20 to 40 supplemented by abrasives (repeat as needed)	Not possible
Hard packed snow/ice	At or below -8°C	Successive treatments at 20 to 40, supplemented by abrasives (repeat as needed)	Not possible
Sustained low temperatures	Below -10°C	Refer to Section	

**Notes:**

- (a) Rate of spread for precautionary treatments may be adjusted to take account of variations occurring along the route such as residual salt, surface moisture (in the air or on the road surface) and traffic density.
- (b) For salt stored outside, it may be necessary to increase the spread rate for precautionary treatment salting from 10gm/m<sup>2</sup> to 15-20gm/m<sup>2</sup>.
- (c) All decisions should be forecast based, recorded and require careful monitoring and review.
- (d) Ice refers to all ice on the road surface, including black ice.
- (e) Longford County Council’s minimum rate of spread of salt is 20gm/m<sup>2</sup> and not 10.

**Target Spread Rates by Location**

Location	Salt Spread Rate
Carriageways	As described in the Treatment Matrix Guideline
Hard shoulder or carriageway marginal strips	50% of selected treatment
Porous Surfacing	<u>Plus</u> 25% of selected treatment
Footways, cycle tracks and pedestrian areas	25 gm/m <sup>2</sup>

**A12 Plant, Vehicles and Equipment**

*“Longford County Council operates 6 demountable mounted salt spreaders and 2 snowploughs to deliver the winter service.”*

Description (List each piece of equipment on its own line, & its registration plate, if applicable)	Depot Location	Capacity	Date Calibrated	Date Serviced	Date of next Calibration	Date of next Service
2 Demountable salt spreaders	Yard	6m <sup>3</sup>	Sept 2015	Sept 2015	Sept 2016	Sept 2016
2 Demountable salt spreaders	Yard	6 m <sup>3</sup> 9 m <sup>3</sup>	Oct 2015	Oct 2015	Oct 2016	Oct 2016
2 Demountable salt spreaders	Yard	6 m <sup>3</sup>	Oct 2015	Oct 2015	Oct 2016	Oct 2016
1 Demountable salt spreader	Yard	3 m <sup>3</sup>	Oct 2015	Oct 2015	Oct 2016	Oct 2016

Snowploughs & Loading Shovels	Depot Location	Fitted to	Date Serviced	Date of next Service
List each snowplough & loading shovel, and a unique identifier	Longford	Lorry as required	Mar 2011	N/A
List each snowplough & loading shovel, and a unique identifier	Longford	Lorry as required	Mar 2011	N/A

### *A13 Details of Depots*

Salt Depot	Total Capacity Storage Outdoor (Tonnes)	Salt Type & Grade	Depot Storage Capacity (tonnes)	Salt in Storage (tonnes)	Storage Available
Longford	-	Fine	900	360	540

### *A14 Materials and Spares*

The Duty Engineers would order salt as per new NRA instructions in conjunction with the NRA liaison staff.

The machinery yard engineer will order spare parts for the winter service plant and equipment as needed .

# **APPENDICES**

**1 - 2**

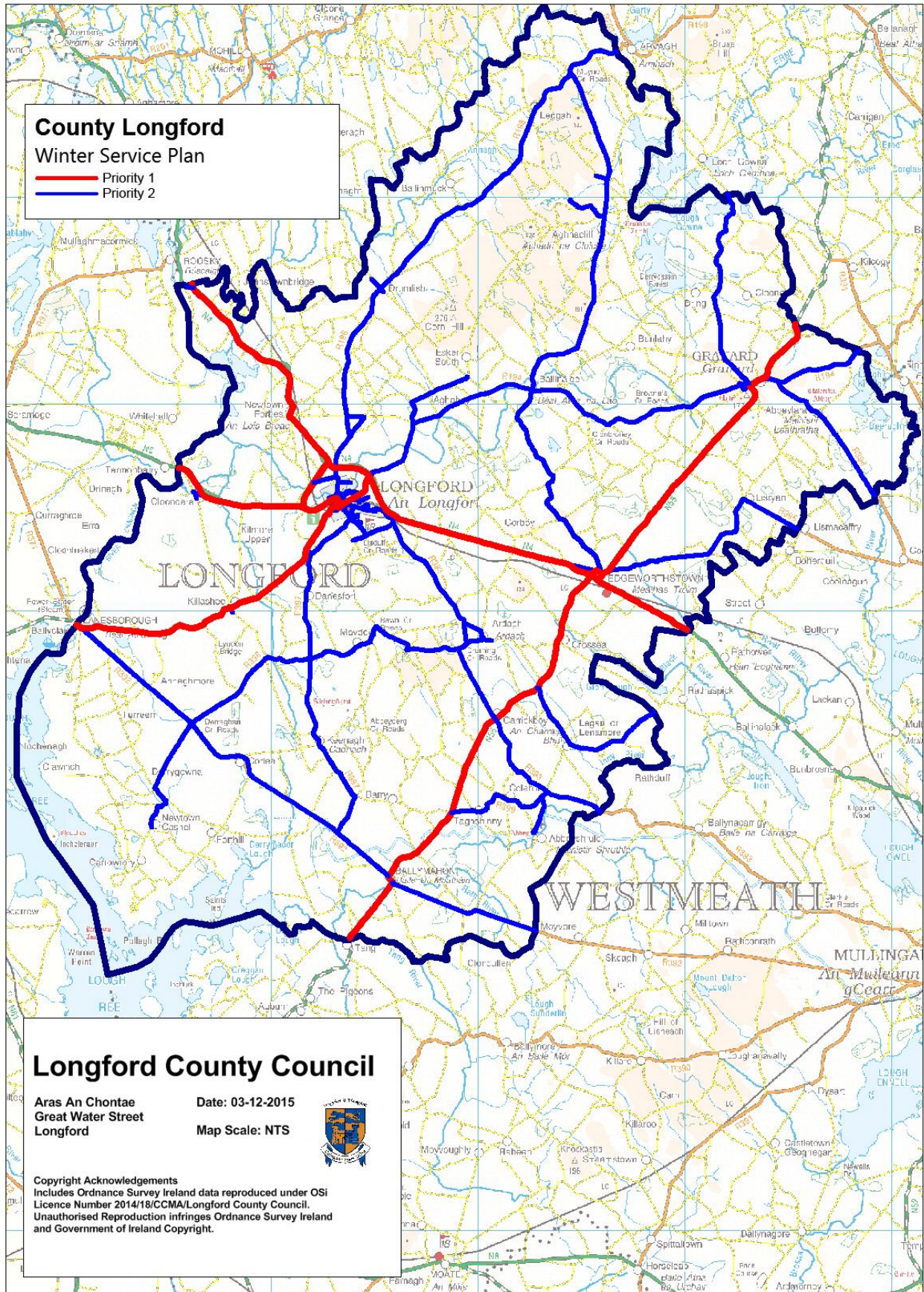
# **APPENDIX 1**

**PRIORITY SALTING ROUTES**

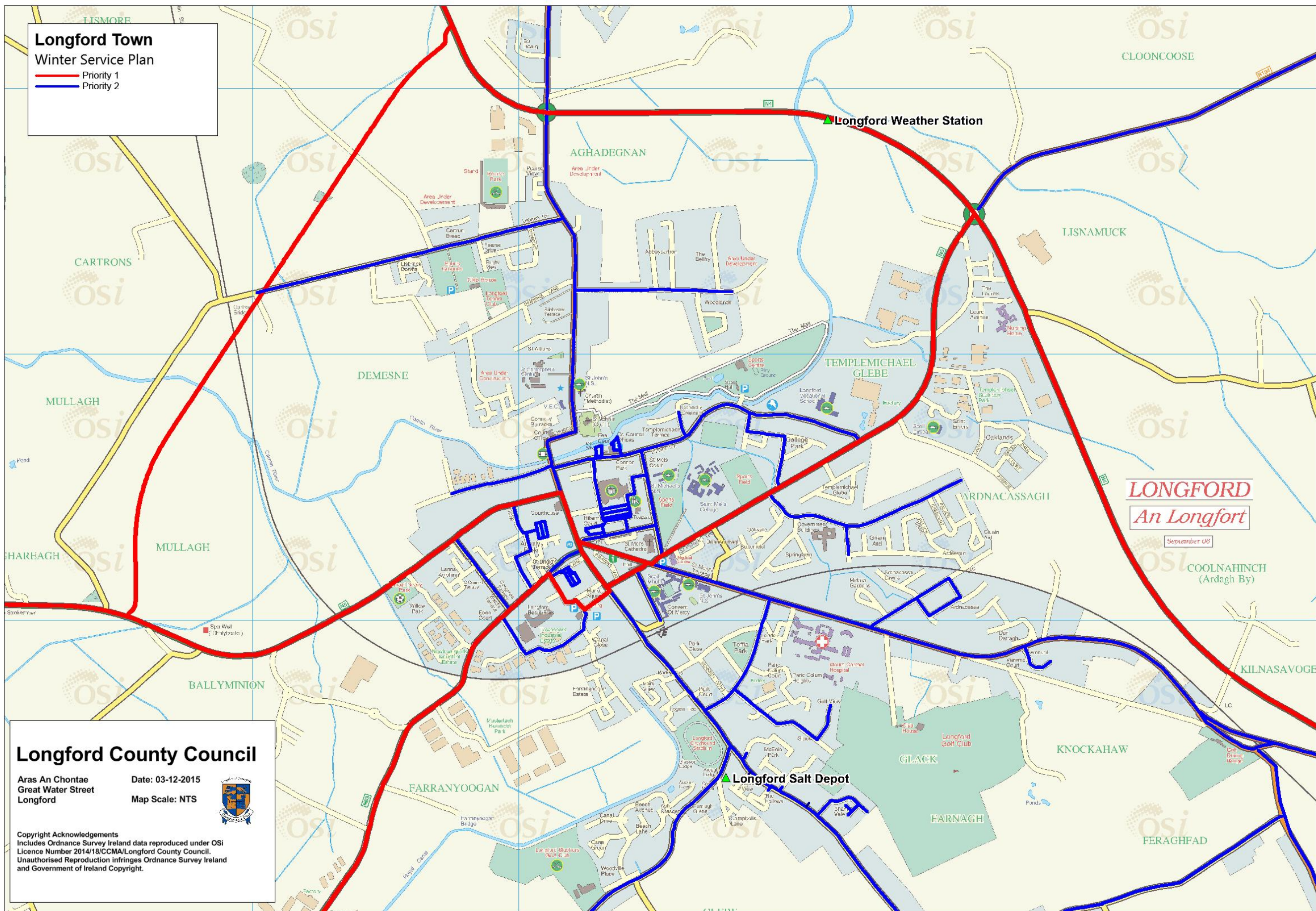
**FOR**

**COUNTY LONGFORD**










**Longford Town**  
**Winter Service Plan**  
 Priority 1  
 Priority 2

**LONGFORD**  
*An Longfort*

September 05

**Longford County Council**  
 Aras An Chontae  
 Great Water Street  
 Longford

Date: 03-12-2015  
 Map Scale: NTS



Copyright Acknowledgements  
 Includes Ordnance Survey Ireland data reproduced under OSI  
 Licence Number 2014/18/CCMA/longford County Council.  
 Unauthorised reproduction infringes Ordnance Survey Ireland  
 and Government of Ireland Copyright.



# **APPENDIX 2**

**SALT DEPOT DATA**

**FOR**

**COUNTY LONGFORD**



Local Authority	Name			
Principal Contact	Eamon Bennett	SEE, Infrastructure		(043) 3346231
Backup Contact	Aidan Naughton	AE , Infrastructure		(043) 3346231
Backup Contact	David Mc Niff	Machinery Technician		(043) 3346231
Number of Salt Depots	1			

Salt Depot Address	GPS Coords	Supervisor Name	Phone
Longford	E213787 N274408	Brian MC Neela	(043) 3346231

Salt Depot	Total Capacity Storage Indoor (Tonnes)	Total Capacity Storage Outdoor (Tonnes)	Depot Storage Capacity (tonnes)	Salt in Storage (tonnes)
Longford	900	-	900	360