

Fire and Emergency Operations Plan

Longford County Council
 Comhairle Chontae An Longfoirt



Title:	Fire and Emergency Operations Plan 2018-2023
Version:	1
Date:	20th September 2018
Status:	Adopted
Recommended by:	Declan Kilcline, Chief Fire Officer
Approved by:	John Brannigan Director of Services
Date Adopted by Longford County Council:	10th October 2018

Promulgation

**Comhairle Contae An Longfoirt
Longford County Council**

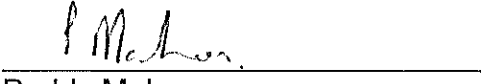
**Fire and Emergency Operations Plan
Section 26, Fire Services Acts, 1981 & 2003**

Made and adopted under the Common Seal of the County Council of the County of Longford this day 22nd October 2018.

Present when the Common Seal of the County Council of the County of Longford was affixed hereto:

Signed: 
Declan Kilcline
Chief Fire Officer
Longford County Council

Signed: 
John Brannigan
Director of Services, Infrastructure, Housing & Emergency Services
Longford County Council

Signed: 
Paddy Mahon
Chief Executive
Longford County Council


Signed: 
Luie McEntire
An Cathaoirleach
Longford County Council

TABLE OF CONTENTS

SECTION	DESCRIPTION	PAGE
Section 1:	Purpose & Scope.....	4
Section 2:	Executive Summary.....	9
Section 3:	Organisation	11
Section 4:	Fire Stations	15
Section 5:	Fire Appliances.....	21
Section 6:	Equipment & Personal Protective Equipment (PPE).....	25
Section 7:	Water Supplies	27
Section 8:	Training.....	29
Section 9:	Health & Safety.....	30
Section 10:	Communications.....	33
Section 11:	Operational Procedures.....	37
Section 12:	Operational Standards.....	39
Section 13:	Fire Safety - Fire Prevention & Building Control	43
Section 14:	Major Emergency Management.....	48
Section 15:	Appendices.....	50
	A. Glossary of Acronyms	
	B. Fire Service Brigade Training Courses	
	C. County Longford Fire Service Drive Times	
	D. County Longford Fire Brigade Equipment	
	E. Pre-Determined Attendances (PDAs)	
	F. Minutes of Longford County Council Meeting 10/10/2018	

Page intentionally left blank

Section 1: Purpose & Scope

The purpose of this Fire & Emergency Operations Plan is to fulfil Longford County Council's statutory obligation as a Fire Authority as outlined in **Section 26 of the Fire Services Acts, 1981 & 2003**.

While the legislation specifically requires that this plan deal with arrangements made with regard to fire and emergency operations, this plan will also take into consideration the substantial range of Fire Safety and Fire Prevention activities carried out by the Fire Service Section, along with the contribution the Fire Authority makes to Major Emergency Management in line with the recommended approach by the Department of Housing, Planning & Local Government (DHPLG) and the National Directorate for Fire and Emergency Management (NDFEM).

Section 26 of the Fire Services Acts, 1981 & 2003, states:

- (1) Each fire authority which maintains a fire brigade shall prepare (and, as occasion requires, revise) plans for fire and emergency operations showing the provision made by it in respect of organisation, appliances, equipment, fire stations, water supplies and extinguishing agents, training, operational procedure and such other matters as may be relevant, and for dealing with operations of an emergency nature under section 25.*
- (2) A copy of every plan made or revised under this section shall be furnished by the fire authority to the Minister who may, if he thinks proper, direct that plans of adjoining authorities be co-ordinated.*
- (3) The making and revision of a plan shall be a reserved function.*

Section 25 of the Fire Services Acts, 1981 & 2003, states:

'A fire authority may carry out or assist in any operations of an emergency nature, whether or not a risk of fire is involved, and a fire authority may accordingly make such provision for the rescue or safeguarding of persons and protection of property as it considers necessary for the purposes of that function'.

The Fire & Emergency Operations Plan also includes reference to operational duties imposed on the Fire Authority by Sections 10(2) and 10(3) of the Fire Services Acts, 1981 & 2003.

Section 10(2) of the Fire Services Acts, 1981 & 2003, states:

'A fire authority shall—

- (a) make provision for the prompt and efficient extinguishing of fires in buildings and other places of all kinds in its functional area and for the protection and rescue of persons and property from injury by fire, and*
- (b) establish and maintain a fire brigade, provide premises and make such other provision as it considers necessary or desirable for such purpose, and*
- (c) make adequate provision for the reception of and response to calls for the assistance of the fire brigade'.*

Section 10(3) of the Fire Services Acts, 1981 & 2003, states:

'A fire authority shall, in the exercise of its functions under subsection (2), have regard (in addition to all other relevant considerations) to the nature of the fire hazards and the probable incidence and extent of fires in its functional area, the character of the area and the value of the property liable to be damaged by fires'.

This plan sets out current arrangements within the Fire Authority, but it also sets out strategic objectives and targets for the Fire Authority for the next 5 years.

This plan shall be reviewed from time to time as deemed appropriate, but in any case it shall be reviewed at least once every 5 years.

Definitions

Fire Authority as per Fire Services Acts, 1981 & 2003

'A fire authority means a Fire Authority to which Section 9 of the Fire Services Acts, 1981 & 2003 applies'.

Longford County Council is the Fire Authority for all of the County of Longford. The operational name for the Longford County Council provided fire service, as the designated fire authority under statute for County Longford, is *Longford County Fire & Rescue Service*.

Fire Brigade as per Fire Services Acts, 1981 & 2003

'Fire brigade means an organised body of persons trained and equipped for extinguishing fires occurring in buildings and other places and for rescuing persons and property from such fires, and includes the vehicles and equipment with which that body is provided'.

Extinguishing of a fire as per Fire Services Acts, 1981 & 2003

'In this Act references to extinguishing a fire shall be construed as including the prevention of a fire from spreading'.

FSNOIG

The Fire Services National Oversight and Implementation Group (FSNOIG), provided for in a December, 2015 agreement between the Department, local authorities, and fire service staff unions as a consultative forum on service development and implementation.

Senior Fire Officer

Fire Service personnel at the following grades - Chief Fire Officer; Senior Assistant Chief Fire Officer; Assistant Chief Fire Officer; Assistant Fire Officer - in accordance with the provisions laid out in the Senior Officers Handbook.

Junior Fire Officer

Fire Service personnel at the following grades – Station Officer; Sub-Station Officer - in accordance with the provisions laid out in the Junior Officers Handbook.

Retained Fire-fighter

Fire-fighters, including Junior Officers, affiliated to a nominated fire brigade, and who are part-time and permanent employees of Longford County Council. They are employed in accordance with the conditions, duties, pay, disciplinary code, etc. relating to part-time Fire-fighters with Longford County Council.

Major Emergency as defined by A Framework for Major Emergency Management

'A Major Emergency is any event which, usually with little or no warning, causes or threatens death or injury, serious disruption of essential services or damage to property, the environment or infrastructure beyond the normal capabilities of the principal emergency services in the area in which the event occurs, and requires the activation of specific additional procedures and the mobilisation of additional resources to ensure an effective, co-ordinated response'.

National Directorate for Fire & Emergency Management

Body established on the 22nd June 2009, the mandate of which is to create an effective model of integrated leadership, development support and oversight by central government of local authority's provision of consistently effective, safe and value-for-money fire and emergency services in Ireland. This body also incorporates the work previously carried out by the Fire Services Council. The Directorate operates under the aegis of the Local Government Division of the Department of Housing, Planning and Local Government.

Category of Incidents

- Primary incidents - "Primary Incidents are fires or other incidents involving reported casualties or situations requiring rescue of persons"
- Secondary incidents - "Secondary Incidents are fires involving vehicles (other than cars), trailers or other methods of transport; other categories of incidents including RTAs, hazmat etc. not involving persons reported"
- Tertiary incidents - "Incidents which pose little or no threat to life"

Keeping Communities Safe – A Framework for Fire Safety in Ireland (KCS)

'Keeping Communities Safe' is the output from a review in 2012 of fire services and fire safety in Ireland. It aims to provide a comprehensive, balanced strategy to ensure the safety of the public in their homes and other locations, as well as worker safety in providing emergency services. It is an integrated blue-print for further development of the critical public safety roles performed by local authority fire services, to be implemented in the period 2013 – 2015. 'Keeping Communities Safe' is about managing risk, addressing public safety improvement, incident reduction, response standards and service delivery structures for the decade ahead. 'Keeping Communities Safe' is an evidence-led plan, based on international best practice and with international expert validation.

East Region Communications Centre (ERCC)

The East Region Communications Centre based in Tara Street Dublin receives emergency calls and mobilises resources for the Fire Service in Longford and all the counties in the eastern region. Under Section 10(2)(c) of the Fire Services Act, 1981, Fire Authorities are required to make adequate provision for the reception of and response to calls for assistance of the Fire Brigade. The Fire Authorities in the Eastern Region entered into a Section 85 agreement under the Local Government Act with this centre for the provision of these functions.

Section 2: Executive Summary

This Fire & Emergency Operations Plan is a factual analysis of the Fire Service as it currently stands, in terms of its organisational structures, its assets, its operating procedures and so on. The Plan sets out the strategic objectives for the Fire Service that Longford County Council wishes to achieve during the life of the Plan (2018-2023). These strategic objectives are set out at the end of each chapter and are summarised as follows:

Section 3 – Organisation

Longford County Council (LCC) will maintain its staffing complement of four Senior Fire Officers, forty nine Fire Fighters and two Administration Personnel to ensure the required level of service and the objectives of this plan are achieved. Current agency arrangements for the provision of fire cover that are currently in place with Westmeath, Roscommon and Cavan will continue.

Section 4 – Fire Stations

LCC will continue to develop and maintain all fire stations in the county to meet operational requirements. We are currently trying to identify a suitable site and will seek Capital Grant Aid Funding to develop a new fire station in Ballymahon during the period of this plan.

Section 5 – Fire Appliances

LCC will ensure that all vehicles will continue to undergo an annual preventative maintenance programme and will undertake the Road Safety Authority's CVRT on an annual basis. LCC will be applying for capital grant funding during the life of the plan for 2 no. Class B Fire Appliances.

Section 6 – Equipment

LCC will maintain all equipment in accordance with manufacturer's instructions/statutory requirements/best practice. LCC will continue to provide the appropriate Personal Protective Equipment (PPE) to all personnel, procuring this PPE to the appropriate standards and maintaining it in accordance with manufacturer's instructions and statutory requirements.

Section 7 – Water Supplies

LCC shall maintain the current mobile water capacity currently in each fire station. LCC will continue to liaise and work with Irish Water to ensure adequate access to available water supplies for fire-fighting purposes in County Longford. For large developments Longford County Fire & Rescue Service will specify water capacity requirements during the planning development stages.

Section 8 – Training

LCC will continuously review its training requirements in preparing its annual operations plan taking into account service needs, health and safety requirements and national policy. A training policy will be developed during the life of the plan. New recruit firefighters entering the service will be trained to a QQI Level 6 fire-fighting operations special purpose award.

Section 9 – Health & Safety

LCC is committed to the prevention of injury and ill health to its personnel and persons affected by our activities. This is achieved by setting out health and safety related objectives, measurement of performance, taking measures to ensure compliance with legal requirements and compliance with national guidance applicable to the fire service. LCC is committed to document, implement, maintain and continually develop its Occupational Health and Safety Management System in accordance with the requirements of the Local Authority Occupational Health and Safety Management Systems Requirements and the Safety, Health and Welfare at Work Act 2005.

Section 10 – Communication

Longford County Council will remain as a Fire Authority within the East Region Communications Centre (ERCC). The fire service will work with ERCC and the CTrí Project Team on the roll out of the new single national mobilisation system and the Tetra Radio System to the fire service during the life of this plan.

Section 11 – Operational Roles and Procedures

LCC will attend at incident types as detailed in accordance the Pre-Determined Attendance notified to ERCC. LCC will continue to work in accordance with the National Incident Command System and Standard Operational Guidance (SOG) Documents that have been prepared by the National Directorate for Fire and Emergency Management (NDFEM) and adapted for local use.

Section 12 – Operational Standards

LCC will continue with existing arrangements in order to maintain the current crewing complements at all Fire Stations. Longford Town is staffed by 13 fire fighters including a full time station officer and a crew of 9 in the other one-pump stations (Granard, Ballymahon, Edgeworthstown and Lanesborough). LCC will continue to implement staffing arrangements to ensure that a crew is available at all times.

Section 13 – Fire Safety & Other Emergencies – Fire Prevention and Building Control

LCC intends to comply with all relevant Fire Prevention and Building Control Legislation and Regulations during the life of this plan. Higher risk commercial premises will be targeted for inspections through a risk based approach. LCC will continue to work with other agencies and community stakeholders to target higher risk homes providing smoke alarms for these homes and promoting awareness of how the risk of fire can be reduced in domestic dwellings. LCC will continue to support and assist the Longford Road Safety Committee in its endeavours to reduce death and injury on Longford roads due to road traffic collisions.

Section 14 – Major Emergency Management

LCC will continue to prepare for large-scale and inter-agency operations through participation in appropriate training and exercises and maintaining suitable facilities for emergency coordination. Longford County Fire & Rescue Service will continue to participate on the Longford County Council Major Emergency Management Committee along with the participation on the Midlands Regional Working and Steering Groups as appropriate.

Section 3: Organisation

Longford County Council is the Fire Authority for the County of Longford operating generally under the Fire Services Acts, 1981 & 2003 and the Building Control Acts, 1990 & 2007.

The Fire Service of Longford County Council forms part of the Housing, Infrastructure, Environment and Emergency Services Directorate which is under the direction of a Director of Services. The Director of Services for Housing, Infrastructure, Environment and Emergency Services and the Chief Fire Officer are the delegated officers for the executive functions of the Fire Service.

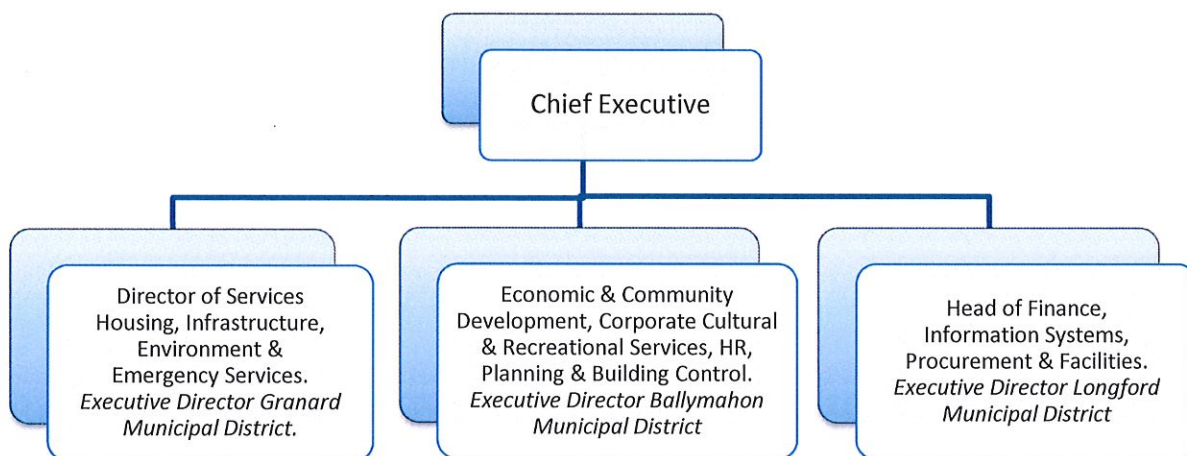


Figure 3.1 Organisational Structure of Longford County Council Senior Management

The Fire Authority is organised under the Chief Fire Officer (CFO) who has primary responsibility for the delivery of fire services under the direction of the Director of Emergency Services and is assisted by the following personnel:

- 2 No. Senior Assistant Chief Fire Officers (SACFO)
- 1 No. Assistant Chief Fire Officers (ACFO)
- 1 No. Staff Officer
- 1 No. Clerical Officer

The Chief Fire Officer, Senior Assistant Chief Fire Officers and the Assistant Chief Fire Officer are professional technically qualified officers.

The organisational structure of Longford County Fire & Rescue Service is set out in Figure 3.2 below.

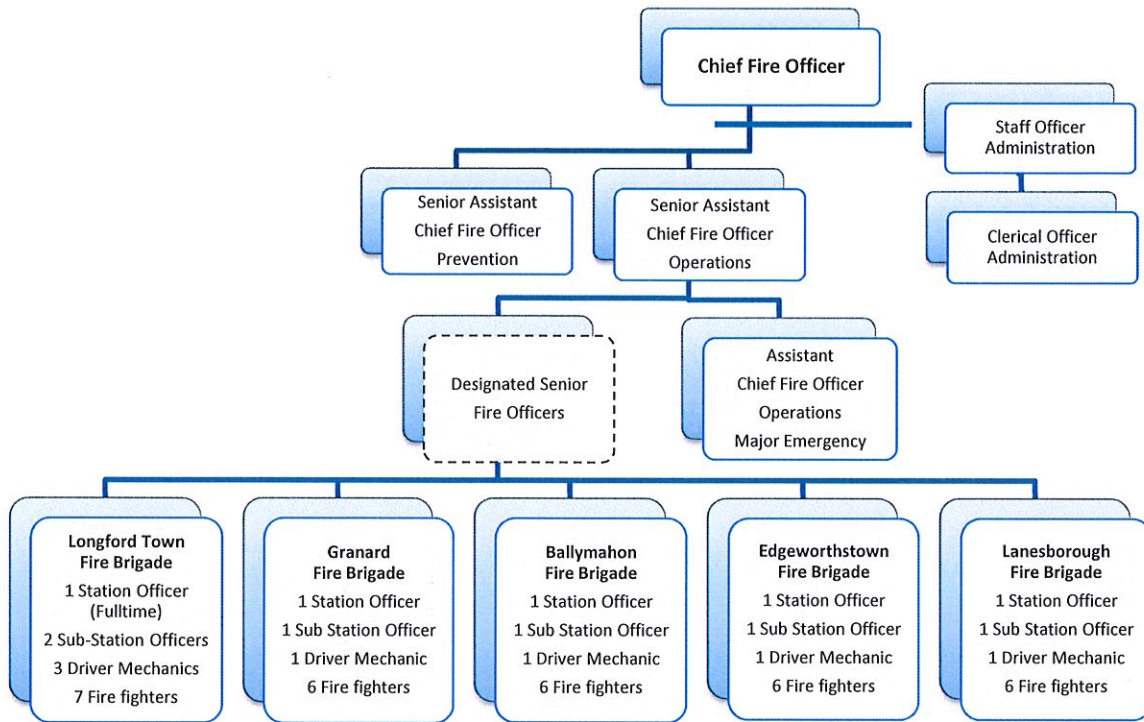


Figure 3.2: Organisational Structure of Longford County Fire & Rescue Service

Fire officers responsible for fire prevention are generally engaged in inspections of buildings under the Fire Services Act 1981-2003; assessment and provision of reports on Planning; the processing of Fire Safety Certificates and carrying out Licensing Inspections in relation to Dance & Liquor Licence Applications.

The Operations fire officers are generally engaged in the delivery and management of the Fire Brigades. The principal roles are exercising support, supervisory and disciplinary functions to Fire Brigades, procurement of appliances and equipment, responding to, and taking control, if necessary, of incidents to which a fire brigade response has been made.

The fire officer involved in Emergency Management is generally engaged in the planning and preparation for major emergencies in accordance with the *Framework for Emergency Management, 2006*. This is a cross-sectoral role within Longford County Council and also involves close co-ordination and collaboration with the other two Principal Response Agencies: An Garda Síochána and the HSE.

Administration personnel support the technical and operational personnel within Longford County Fire & Rescue Service carrying out general administrative duties such as arranging for payment of wages and invoices, issuing of invoices and receipt of correspondences.

Crews are provided by retained fire-fighters reporting to a retained Station Officer in each Station (with the exception of Longford Town fire station which has a fulltime Station Officer). The Station Officers in turn report to nominated Senior Fire Officers. Fire-fighters carry a pager and are expected to report to Fire Station to go mobile to the incident. It is expected

that the average time for the first fire appliance to mobilise from any fire station should be less than 6 minutes for retained brigades with the National target time being 5 minutes. There are three Rostered Senior Fire Officers (RSFO) appointed within Longford County Fire & Rescue Service. A RSFO roster system is in place which ensures that a senior officer is always available to assist in the handling of more serious emergency incidents. All three RSFO are appointed by Chief Executive’s Order, and are authorised under the Fire Services Acts, 1981 & 2003.

There are five retained fire brigades within County Longford. They are located as follows:

Call Sign	Station	Fire Brigade Personnel	Risk Categorisation
LD11	Longford Town (2-Pump Station & Fire Brigade HQ)	1 No. Full-time & 12 Retained	C2
LD12	Granard (1-Pump Station)	9 No. Retained	D2
LD13	Ballymahon (1-Pump Station)	9 No. Retained	D2
LD14	Edgeworthstown (1-Pump Station)	9 No. Retained	D1
LD15	Lanesborough (1-Pump Station)	9 No. Retained	D2

Longford Town Station is deemed to have an overall area risk categorisation of C2 in accordance with the Risk Categorisation Table provided in Keeping Communities Safe (KCS) Document (2013). Accordingly, the full crew compliment for the station, (other than Senior Fire Officers and Administration personnel based at the Central Fire Station) is 13 personnel as follows;

- 1 No. Full-time Station Officer
- 2 No. Retained Station Sub-Officers
- 3 No. Retained Driver Mechanics
- 7 No. Retained Fire-fighters

The current crewing arrangement for these personnel is as follows;

- An arrangement is in place to provide for a minimum number of 9 retained personnel to be available to respond for call-outs at Longford Town Fire Station,
- In general, at least one officer must respond (either the Full-time Station Officer or the Retained Station Sub-Officer).

The outer stations in County Longford (Granard, Ballymahon, Edgeworthstown and Lanesborough) are deemed to have overall area risk categorisations of D1 and D2s as listed above in accordance with the Risk Categorisation Table provided in Keeping Communities Safe (KCS) Document (2013). Accordingly, the full crew compliment for the station, in accordance with the Guidance provided in the KCS Document is 9 personnel as follows;

- 1 No. Retained Station Officer
- 1 No. Retained Station Sub-Officer
- 1 No. Retained Driver Mechanic
- 6 No. Retained Fire-fighters

The current crewing arrangement for these personnel is as follows;

- An arrangement is in place to provide for a minimum number of 6 retained personnel to be available to respond for call-outs at the outer stations in County Longford.
- In general, at least one officer must respond (either the Retained Station Officer or the Retained Station Sub-Officer).

3.1 Arrangements with other Fire Services

Longford Fire and Rescue Service provides primary fire cover to designated parts of east County Roscommon, parts of north County Westmeath and parts of County Cavan. This arrangement is provided by way of a Service Level Agreement. Longford County Fire & Rescue Service also provides secondary fire cover to parts of all neighbouring counties.

Dublin City Council operates the East Region Communications Centre on an agency basis to provide the statutory obligation as regards call-out of the Fire Service for Longford County Fire & Rescue Service. In order to fulfil this function Longford Service entered into agreement with Dublin City Council, under Section 85 of the Local Government Act, 2001, for the provision of a mobilisation facility for fire services in County Longford.

3.2 Strategic objectives for the period of this Plan:

Longford County Council (LCC) will maintain its staffing complement of four Senior Fire Officers, forty nine Fire Fighters and two Administration Personnel to ensure the required level of service and the objectives of this plan are achieved. Current agency arrangements for the provision of fire cover that are currently in place with Westmeath, Roscommon and Cavan will continue.

Section 4: Fire Stations

Longford County Council operates five fire stations. They are located in the following towns: Longford Town, Granard, Ballymahon, Edgeworthstown and Lanesborough.

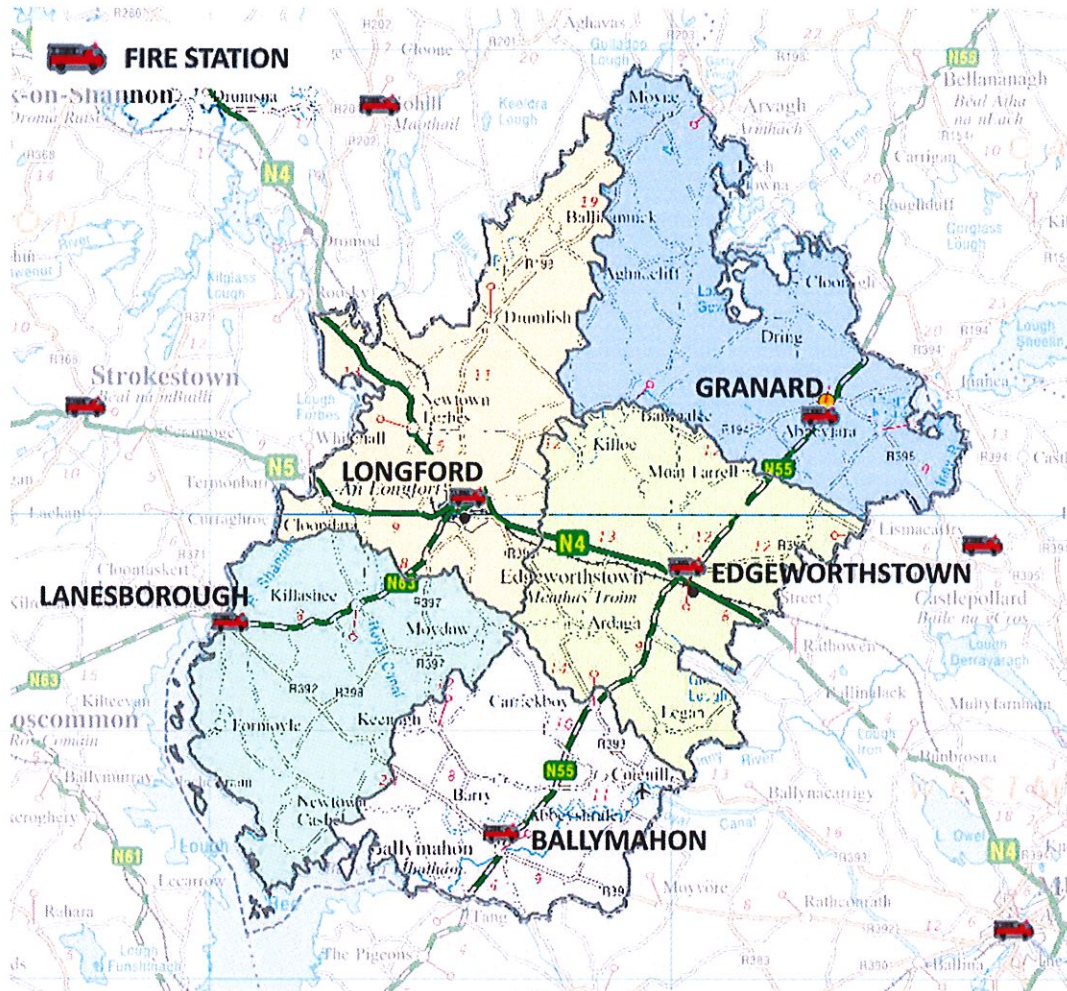


Figure 4:1: Location of fire stations serving County Longford

All major construction projects, including major refurbishment projects at fire stations, receive capital funding from the NDFEM. Ongoing day-to-day maintenance of fire stations is funded from the Council’s annual revenue budget.

The figure in Appendix C illustrates travel times from fire stations in county Longford. From this information map of the county, it can be seen that there are limited areas outside the 20 minutes response times (areas not shaded) e.g. in the north west of the county. This shows that the stations are suitably located to cover the fire and emergency risk in the county.

4.1. Longford Town Fire Station (LD11)

													
Station Address:	Templemichael, Longford, Co. Longford, N39 FW96 (Located off the Ballinalee Road North East of Longford Town Centre)												
Date opened:	June 1995												
No. and type of appliances:	<ul style="list-style-type: none"> • 2 No. Standard (Class B) Fire Appliances • 1 No. Emergency Tender Appliance • 1 No. Aerial Appliance • 1 No. Control Vehicle • 4 No. 4 Wheel Drive Jeeps • 1 No. Tanker Unit, 1 No. Tractor Unit and 2 No. Tankers • 1 No. Kubota Unit 												
Fireground Details:	Population: 18,180 [NDFEM 2011], Area 242 km ²												
Total number of turn-outs / annum:	<table border="1" style="width: 100%; text-align: center;"> <thead> <tr> <th style="width: 15%;">Year</th> <th style="width: 12.5%;">2013</th> <th style="width: 12.5%;">2014</th> <th style="width: 12.5%;">2015</th> <th style="width: 12.5%;">2016</th> <th style="width: 12.5%;">2017</th> </tr> </thead> <tbody> <tr> <td>No. of Turnouts</td> <td>219</td> <td>199</td> <td>247</td> <td>234</td> <td>217</td> </tr> </tbody> </table>	Year	2013	2014	2015	2016	2017	No. of Turnouts	219	199	247	234	217
Year	2013	2014	2015	2016	2017								
No. of Turnouts	219	199	247	234	217								
Station Accommodation and Facilities	<ul style="list-style-type: none"> • 4-bay Appliance Room • Watch Room • Muster Room • Wash Room • Ladies and Gents toilets & showers • Drying Room • Shared Lecture Room • Shared Kitchenette • B.A. Servicing Room • B.A. Compressor Room • Storeroom • Boiler & Standby Generator Room • Workshop • Training/Drill Yard incorporating Drill Tower & Hydrants • Parking Spaces <p>A new extension is currently under construction which will provide an additional double bay and office facilities</p>												
Administration Accommodation and Facilities	<p>The administration section of the building accommodates the Chief Fire Officer, full time Fire Officers and Administrative staff</p> <ul style="list-style-type: none"> • Reception Area • 4 No. Offices (Chief Fire Officer, Admin. & Fire Prevention) • Male / Female / Disabled Toilets • Shared Lecture Room • Shared Canteen / Kitchenette 												

4.2. Granard Fire Station (LD12)



Station Address:	Rathcronan, Granard, Co. Longford, N39 E443					
Date opened:	2007					
No. and type of appliances:	<ul style="list-style-type: none"> • 1 No. Standard (Class B) Fire Appliance • 1 No. Emergency Tender • 1 No. 4 Wheel Drive Jeep 					
Fireground Details:	Population: 6,850 [NDFEM 2011],			Area: 283 km ²		
Total number of turn-outs / annum:	Year	2013	2014	2015	2016	2017
	No. of Turnouts	61	39	49	47	45
Station Accommodation and Facilities	<ul style="list-style-type: none"> • 2-bay Appliance Room • Watch Room • Muster Room • Ladies and Gents toilets & showers • Lecture Room • Canteen • Wash Room • Station Officer Office • Drying Room • B.A. Servicing Room • Storeroom • Boiler Room • Training/Drill Yard incorporating Drill Tower and Hydrants • Parking Spaces 					

4.3. Ballymahon Fire Station (LD13)



Station Address:	Mostrim Road, Ballymahon, Co. Longford, N39 RK11					
Date opened:	1997					
No. and type of appliances:	<ul style="list-style-type: none"> • 1 No. Standard (Class B) Fire Appliance • 1 No. Emergency Tender/Water Tanker • 1 No. 4 Wheel Drive Jeep 					
Fireground Details:	Population: 8,230 [NDFEM 2011],			Area: 336 km ²		
Total number of turn-outs / annum:	Year	2013	2014	2015	2016	2017
	No. of Turnouts	63	56	62	59	60
Station Accommodation and Facilities	<ul style="list-style-type: none"> • 2-bay Appliance Room • Watch Room • Muster Room • Toilets & showers • Lecture Room • Kitchenette • Station Officer Office • Drying Room • B.A. Servicing & Wash Room • Storeroom • Boiler Room • Limited Training/Drill Yard • Parking Spaces 					

4.4. Edgeworthstown Fire Station (LD14)



Station Address:	Old Longford Road, Edgeworthstown, Co. Longford, N39 T291					
Date opened:	2011					
No. and type of appliances:	<ul style="list-style-type: none"> • 1 No. Standard (Class B) Fire Appliance • 1 No. Emergency Tender • 1 No. 4 Wheel Drive Jeep 					
Fireground Details:	Population: 7,435 [NDFEM 2011],			Area: 283 km ²		
Total number of turn-outs / annum:		2013	2014	2015	2016	2017
	Year No. of Turnouts	101	63	68	83	65
Station Accommodation and Facilities	<ul style="list-style-type: none"> • 3-bay Appliance Room • Watch Room • Muster Room • Ladies, Gents & Disabled Toilets • Ladies & Gents showers • Lecture Room • Canteen • Wash Room • Station Officer Office • Drying Room • B.A. Servicing Room • Storerooms • Boiler Room • Training/Drill Yard incorporating Drill Tower and Hydrants • Parking Spaces 					

4.5. Lanesborough Fire Station (LD15)



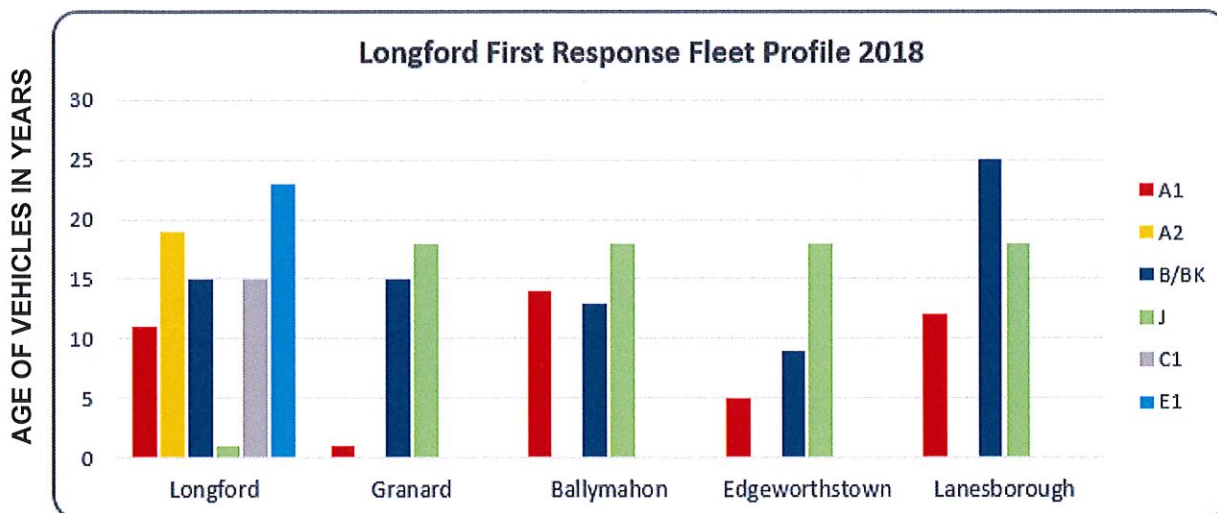
Station Address:	Knock, Lanesborough, Co. Longford, N39 E763					
Date opened:	2014					
No. and type of appliances:	<ul style="list-style-type: none"> • 1 No. Standard (Class B) Fire Appliance • 1 No. Emergency Tender/Water Tanker • 1 No. 4 Wheel Drive Jeep 					
Fireground Details:	Population: 5,405 [NDFEM 2011],			Area: 245 km ²		
Total number of turn-outs / annum:	Year	2013	2014	2015	2016	2017
	No. of Turnouts	31	30	27	43	36
Station Accommodation and Facilities	<ul style="list-style-type: none"> • 2-bay Appliance Room • Watch Room • Muster Room • Ladies and Gents toilets & showers • Lecture Room • Canteen • Wash Room <ul style="list-style-type: none"> • Station Officer Office • Drying Room • B.A. Servicing Room • Storeroom • Boiler Room • Training/Drill Yard incorporating Drill Tower & Hydrants • Parking Spaces 					

4.9. Strategic objectives for the period of this Plan:

Longford County Council will continue to develop and maintain all fire stations in the county to meet operational requirements. We are currently trying to identify a suitable site and will seek Capital Grant Aid Funding to develop a new fire station in Ballymahon during the period of this plan.

Section 5: Fire Appliances

Longford County Fire & Rescue Service maintains a variety of different types of vehicles in the five fire stations, i.e. Class B Fire Appliance (normal fire appliance), Emergency Tenders, High Reach Appliance, Water Tankers and 4 Wheel Drive Vehicles as detailed in the following sections.















Details of Vehicle Legend for Call Signs		
■ A1: First Turnout Class B Pumping Appliance	■ B/BK: Emergency Tender / ET with Water Capacity	■ C1: Control Unit
■ A2: Second Turnout Class B Pumping Appliance	■ J: 4 wheel Drive Jeep with VMS and signage	■ E1: Hydraulic Platform

The disposition and age status of the entire Class B fleet is reviewed on an ongoing basis by the Chief Fire Officer to ensure its maximum effective deployment. The normal life span of a new Class B Appliance is generally 20 years – a recommended maximum of 15 years as a first response appliance and a subsequent 5 years as a second response appliance. Granard is due delivery of a new Class B appliance during 2018. A replacement programme of one fire appliance every 3 years would maintain a good standard within the fleet.

The Department of Housing, Planning and Local Government provides capital funding for the replacement of Class B Appliances under its Capital Investment Programme. The typical replacement cost for a partially equipped Class B Appliance is in the order of €400,000 (VAT inclusive). The distribution and age profile of all Class B Appliances is demonstrated in the tables that follow.

LD11 Longford Town (Fire Brigade HQ)		
<p>Appliance Type: Class B Pumping Fire Appliance</p> <p>Appliance Call Sign: LD11A1</p> <p>Year First Registered: 2007</p> 	<p>Appliance Type: Class B Pumping Fire Appliance</p> <p>Appliance Call Sign: LD11A2</p> <p>Year First Registered: 1999</p> 	<p>Appliance Type: Emergency Tender</p> <p>Appliance Call Sign: LD11B1</p> <p>Year First Registered: 2003</p> 
<p>Appliance Type: Control Unit</p> <p>Appliance Call Sign: LD11C1</p> <p>Year First Registered: 2003</p> 	<p>Appliance Type: Aerial Appliance</p> <p>Appliance Call Sign: LD11E1</p> <p>Year First Registered: 1995</p> 	<p>Appliance Type: 4x4 Jeep</p> <p>Appliance Call Sign: LD11J1</p> <p>Year First Registered: 2000</p> 
<p>Appliance Type: 4x4 Jeep</p> <p>Appliance Call Sign: LD11J2</p> <p>Year First Registered: 2003</p> 	<p>Appliance Type: 4x4 Jeep</p> <p>Appliance Call Sign: LD11J3</p> <p>Year First Registered: 2015</p> 	<p>Appliance Type: 4x4 Jeep</p> <p>Appliance Call Sign: LD11J4</p> <p>Year First Registered: 2017</p> 
<p>Appliance Type: Tanker</p> <p>Appliance Call Sign: LD11K1</p> <p>Year First Registered: 2003</p> 	<p>Appliance Type: Tanker</p> <p>Appliance Call Sign: LD11K2</p> <p>Year First Registered: 1995</p> 	<p>Appliance Type: Kabota</p> <p>Appliance Call Sign: n/a</p> <p>Year First Registered: 2008</p> 

<p style="writing-mode: vertical-rl; transform: rotate(180deg);">LD12 Granard</p>	<p>Appliance Type: Class B Pumping Fire Appliance</p> <p>Appliance Call Sign: LD12A1</p> <p>Year First Registered: 2001</p> 	<p>Appliance Type: Emergency Tender & Tanker</p> <p>Appliance Call Sign: LD12BK1</p> <p>Year First Registered: 2003</p> 	<p>Appliance Type: Emergency Tender</p> <p>Appliance Call Sign: LD12J1</p> <p>Year First Registered: 2000</p> 
<p style="writing-mode: vertical-rl; transform: rotate(180deg);">LD13 Ballymahon</p>	<p>Appliance Type: Class B Pumping Fire Appliance</p> <p>Appliance Call Sign: LD13A1</p> <p>Year First Registered: 2004</p> 	<p>Appliance Type: Emergency Tender & Tanker</p> <p>Appliance Call Sign: LD12BK1</p> <p>Year First Registered: 2005</p> 	<p>Appliance Type: Emergency Tender</p> <p>Appliance Call Sign: LD12J1</p> <p>Year First Registered: 2000</p> 
<p style="writing-mode: vertical-rl; transform: rotate(180deg);">LD14 Edgeworthstown</p>	<p>Appliance Type: Class B Pumping Fire Appliance</p> <p>Appliance Call Sign: LD14A1</p> <p>Year First Registered: 2013</p> 	<p>Appliance Type: Emergency Tender & Tanker</p> <p>Appliance Call Sign: LD14B1</p> <p>Year First Registered: 2009</p> 	<p>Appliance Type: Emergency Tender</p> <p>Appliance Call Sign: LD14J1</p> <p>Year First Registered: 2000</p> 
<p style="writing-mode: vertical-rl; transform: rotate(180deg);">LD15 Lanesborough</p>	<p>Appliance Type: Class B Pumping Fire Appliance</p> <p>Appliance Call Sign: LD15A1</p> <p>Year First Registered: 2006</p> 	<p>Appliance Type: Emergency Tender & Tanker</p> <p>Appliance Call Sign: LD15BK1</p> <p>Year First Registered: 1993</p> 	<p>Appliance Type: Emergency Tender</p> <p>Appliance Call Sign: LD15J1</p> <p>Year First Registered: 2000</p> 

The current Class B appliance in Granard will become an equipped spare/training appliance for the county and will be housed in Edgeworthstown fire station when the new Granard appliance comes into operation.

The aerial appliance is currently 23 years old (registered 1995) and would be due replacement at 30 years old (subject to good mechanical order). One aerial appliance is sufficient for the county to meet travel times as outlined in the Keeping Communities Safe Guidance Document. At the end of the term of this plan a needs assessment should be conducted with neighbouring counties to determine the requirement for an aerial appliance to serve County Longford.

5.1. Hazmat Trailer

There is 1 No. hazmat trailer stationed at Longford fire station. The equipment that is stored in the trailer includes air inflatable tent complete with lighting and heating systems and decontamination shower.

5.2. Fleet Maintenance Programme

All vehicles are maintained and serviced by external contractors. An annual service schedule is issued at the beginning of the year and all vehicles are programmed in for a 12-monthly service. In addition to the above, all appliances undergo the annual Commercial Vehicle Roadworthiness Test (CVRT) which provides an annual certificate of roadworthiness by an independent assessor. An alternate six-monthly vehicle inspection check is also carried out by external contractors to comply with RSA requirements. In addition, all Fire Appliances are inspected on drill night and checked after use by the driver/fire-fighter. These checks are recorded in the Appliance Log Book.

5.3. Strategic objectives for the period of this Plan:

Longford County Council will ensure that all vehicles will continue to undergo an annual preventative maintenance programme and will undertake the Road Safety Authority's CVRT on an annual basis. LCC will be applying for capital grant funding during the life of the plan for 2 no. Class B Fire Appliances.

Section 6: Equipment & Personal Protective Equipment (PPE)

6.1 Introduction

Due to the large variety of incident types the fire brigades in Longford attend, it is necessary to carry an extensive range of equipment & personal protective equipment (PPE). Much of the equipment & PPE is used on a regular basis, however some of the more specialised equipment is only used occasionally for specific types of fires or rescues.

The deployment and location of specialist equipment is kept under constant review and may be adjusted depending on the operational needs at a given time.

6.2 Equipment

Longford County Fire & Rescue Service carries its core equipment on each Class B Fire Appliance which are equipped to deal with a wide range of emergency incidents. Each station is equipped with a second vehicle equipped with equipment for dealing with road traffic collisions and hazardous materials (HazMat) incidents. Specialist rescue equipment including a Hiab on the Longford Town Emergency Tender and equipment for dealing with hazardous materials including an inflatable tent and decontamination shower contained in the Hazmat trailer is located at Longford Fire Station.

The ongoing preventative maintenance and standard testing of this equipment is a major task coordinated by Longford County Fire & Rescue Service HQ. All Fire Service equipment is checked after use and has periodic inspections and standard tests undertaken as shown on the list in Appendix D. These checks are recorded in an Equipment Check Log Book. Any defects or problems with equipment are brought to the attention of the Station's nominated Senior Officer for follow-up action.

Standard Tests

Certain equipment such as ladders, pumps and branches carried on a Class B Fire Appliance undergo standard testing at periodic intervals. The normal period is 6 months but some equipment is tested annually. These standard tests of the specified equipment are carried out by the crews in the stations during the last drill night of each quarter, on an alternating basis. Records of the standard tests for all equipment are maintained at each station.

Due to the specialist nature of some of the equipment, it needs to be inspected / maintained by specialist external contractors. This also includes equipment that is fixed in the various fire stations. Appendix D details equipment checking, inspecting and testing requirements.

Equipment will reach its end-of-life on an ongoing basis. It is the intention of Longford County Fire & Rescue Service to continue to maintain all equipment to the required standards and to replace equipment as required.

Longford County Fire & Rescue Service will also continue to review the latest trends in technologies and equipment that are available and will procure and introduce such new equipment as appropriate. It should be noted that this equipment will be replaced using revenue allocations made by Longford County Council. Major items of equipment may also be grant aided by the NDFEM.

6.3 PPE

Due to the hazards associated with many aspects of operational activity, wearing appropriate PPE is a critical measure utilised to reduce the risk. The standard PPE issued to all personnel and PPE available for specialist operations includes the following:

Standard PPE issued to all operations personnel for normal operations (attendance at turn-outs and training)	PPE available for specialist operations
2 No. Fire fighting tunics 2 No. Fire fighting leggings 1 No. Fire helmet 2 Pair of Fire-fighter boots 2 Pairs of Fire fighting gloves 2 No. Anti-flash hoods (shoulder length) 1 No. Undergarments (leggings and top) 1 No. Hi-Viz surcoat 1 no. Wildland fire-fighting Kit 1 No. Safety glasses & 1 No. Earplugs	Chemical protective clothing suits (Splash suits and Gas tight suits, 2 of each per outer station) Chainsaw PPE Buoyancy aids (Life jackets, Personal flotation devices) Working at heights fall arrest protection Waders (4 per station) Dry suit, shoes and water rescue helmet

All PPE is maintained in accordance with manufacturers recommendations. PPE is regularly checked and any defects reported for maintenance.

Strategic objectives for the period of this Plan:

LCC will maintain all equipment in accordance with manufacturer’s instructions/statutory requirements/best practice. LCC will continue to provide the appropriate Personal Protective Equipment (PPE) to all personnel, procuring this PPE to the appropriate standards and maintaining it in accordance with manufacturer’s instructions and statutory requirements.

Section 7: Water Supplies

Each standard Class B fire appliance carries 1,800 litres of water in an on-board tank. This generally provides approximately 20 minute supply to one high pressure hose-reel which is likely to be capable of extinguishing small room fires, vehicle fires, small out-house fires, rubbish fires, chimney fires or roof space fires etc. Where water mains, open source supplies or stored water supplies are available, each Class B fire appliance has the capability to pump 2,000 litres per minute depending on the supply/source/appliance pumping capacity.

In order to ensure sufficient availability of water in rural areas each station has additional water capacity on appliances and tankers available from Longford town station as follows:

Station	Class B Fire Appliance		Additional Tanks		Total
	A1	A2	K1 or BK1	K2	
Longford Town	1,800 Litres	1,800 Litres	5,000 Litres	2 x 15,000 litres	38,600 Litres
Granard	1,800 Litres		5,000 Litres		6,800 Litres
Edgeworthstown	2,500 Litres				2,500 Litres
Ballymahon	1,800 Litres		1,800 Litres		3,600 Litres
Lanesborough	1,800 Litres		1,800 Litres		3,600 Litres
Total Mobile Water Capacity					55,300 Litres

Table 7.1 Mobile Water Supplies for County Longford

Each Fire Brigade surveys the condition, accessibility, water flow and marking of public fire hydrants in its operational area on a regular basis. Feedback is provided to *Irish Water* as required. Each Fire Brigade is familiar with the public piped water supply in its own area and is also familiar with main open sources in its operational fire ground. Locations of hydrants in county Longford are displayed using a Garmin Satellite navigation device in the first response fire appliance in each fire station.

Longford County Fire & Rescue Service also advises on requirements for water supply for commercial and housing developments when dealing with planning referrals.

Under Section 29 of the Fire Services Acts, 1981 & 2003,

'(1) The functions of a sanitary authority for the provision of a supply of water shall extend to the supply of water for fire-fighting purposes and the provision and maintenance of fire hydrants at such places as the fire authority requires.

(2) Where a fire authority represents to a sanitary authority that reasonable provision has not been made for a supply of water for fire-fighting purposes, the sanitary authority shall consult with the fire authority as to the measures required and shall take such measures as may be agreed.'

With respect to commercial developments the following requirements apply:

Adequate water supply shall be provided for fire fighting purposes in accordance with the requirements of the Fire Authority and accepted best practice.

Buildings or groups of buildings on the same site having a ground floor area exceeding 1,000m² shall be provided with fire hydrants at a distance of not less than 6m or not more than 46m from the building. Hydrants shall be provided within 30m of a vehicle access roadway if required. Hydrants shall be provided on the scale of 1 hydrant to every 1,000m² of ground floor area. The hydrants shall comply with BS 750: 1984.

As part of the planning referral process, the Fire Authority provides advice to the Planning Authority where a need is identified for additional water supplies for fire fighting purposes is required.

With respect to Fire Brigade access the site shall comply with Section 5.2 of Technical Guidance Document B to the 2006 Building Regulations and the Department of the Environment & Local Government 'Recommendations for Site Development Works for Housing Areas 1998'

7.1. Strategic objectives for the period of this Plan:

Longford County Council shall maintain the current mobile water capacity currently in each fire station. LCC will continue to liaise and work with Irish Water to ensure adequate access to available water supplies for fire-fighting purposes in County Longford. For large developments Longford County Fire & Rescue Service will specify water capacity requirements during the planning development stages.

Section 8: Training

8.1 Introduction

Fire Authorities are obliged under the Fire Services Acts, 1981 & 2003 and the Safety, Health and Welfare at Work Act 2005 to ensure that their fire-fighters and officers are adequately trained and competent to deal with the tasks and varying roles they may encounter in the performance of their duties.

All fire brigade personnel responding to fire service incidents require a minimum level of training to meet core requirements. Many personnel will also require additional training for specialist or supervisory roles. A number of fire brigade personnel will also complete Instructor courses in order that they, in turn, can instruct and direct delivery of training. Personnel also require appropriate refresher training in all of the above throughout their careers, generally delivered either through on-station training or through specific refresher courses.

Training has traditionally been delivered at varying levels (e.g. local station, county, regional, national and international) and through a variety of arrangements. The management of the training programme and schedule for the year is outlined annually in the Longford Fire and Rescue Service Annual Service Delivery Operational Plan.

8.2 On-Station Training

Regular on-station training is seen as the key to ensuring skills are continually kept up to date. Longford County Council provides a minimum of 80 hours on-station training annually (A further minimum of 20 hours on-station equipment checks are undertaken during drill nights annually). All training activity is documented on the drill programme issued to stations for implementation twice yearly.

In addition to this, fire-fighters receive block refresher training each year on a number of skill-sets including Breathing Apparatus Training (BA Training) and Compartment Fire Behaviour Training (CFBT), both on a rolling, biennial basis.

8.3 Core Training

Based on the guidance provided in the NDFEM, Longford County Fire & Rescue Service proposes to generate a Training Policy. This document will set out the legislative underpinning, the training needs analysis of fire-fighters and the record keeping required.

The Training Policy will contain Training Management Templates for delivery of a course. It will outline the core training requirements for each rank and role (Fire-fighter, Fire-fighter / Driver, Sub-Station Officer, Station Officer and Senior Officer) along with the appropriate refresher period for each course as applicable. The Training Policy will also outline a range of specialist courses that fire-fighters and officers may attend.

It is recognised in the NDFEM Training Policy that, although ideally all personnel should be trained as soon as possible in all of the relevant courses listed, it is not always possible to deliver all training required in a short time frame due to logistical and operational constraints. Longford County Fire & Rescue Service will take account of this and, where appropriate, implement guidance from the NDFEM in relation to training during the life of this Plan.

Longford County Fire & Rescue Service will develop a rolling Training Plan on a continuous basis. The provision of training will be prioritised based on a Training Needs Analysis.

8.4. Strategic objectives for this period of the Plan:

Longford County Council will continuously review its training requirements in preparing its annual operations plan taking into account service needs, health and safety requirements and national policy. A training policy will be developed during the life of the plan. New recruit firefighters entering the service will be trained to a QQI Level 6 fire-fighting operations special purpose award.

Section 9: Health & Safety

Health and Safety underpins all aspects of fire service response. Longford County Council has a Safety Statement in place for the Fire Service, most recently updated in January 2018. This Safety Statement has been produced in accordance with section 20 of the Safety, Health and Welfare at Work Act, 2005 and guidance provided by the NDFEM for Fire Authorities.

Longford County Council has adapted the Standard Operational Guidance (SOG) produced by the NDFEM and has localised the guidance documents as required. Risk Assessments are in place as part of the roll-out of Standard Operational Guidance for all incident types. Risk Assessments are being developed and shall be implemented for all Fixed Workplaces, Temporary Workplaces, Equipment, PPE & Generic Activities. Other guidance as outlined in NDFEM guidance is also utilised by this Fire Authority.

In compliance with section 25 of the Safety, Health and Welfare at Work Act, 2005, a Safety Representative has been elected in each station to represent fire service personnel in their station. The Safety Representatives also attend the regular meetings of the fire service Health and Safety Monitoring Consultative Committee.

The Station Officers have been trained in the delivery of the H&S aspect of their role. Sub officer do quarterly safety inspections in their stations. They carry out quarterly inspections within their own stations, and identify issues as they arise. Many issues can be resolved locally at station level, but issues that cannot be resolved are brought to the attention of the nominated Senior Fire Officer and dealt with as appropriate.

A Health and Safety Officer is employed by the Council and gives advice and guidance on the delivery of fire service Health & Safety obligations. Meetings are convened with the Chief Fire Officer on a regular basis to review Health & Safety issues within the Fire Service.

Longford County Fire & Rescue Service uses the National Incident Command System (NICS) to manage safety on the incident ground and during training courses. It provides for managing risk using a dynamic risk assessment process.

Due to the nature of activities carried out by fire brigades, Longford County Fire & Rescue Service is very conscious of continually striving to make the workplace as safe as possible. The continual improvement in all aspects of the fire service enhances health and safety for fire service personnel. The ongoing developments are reflected throughout this document and are also reflected in areas including the following:

- Organisation and Structure
- Crewing Arrangements
- Fire Station Infrastructure
- Fire Appliance vehicles
- Equipment and PPE
- Water Supplies
- Training
- Communications
- Operational Procedures
- Operational Standards
- Fire Safety
- Preparation for Major Emergencies

9.1. Strategic objectives for the period of this Plan:

Longford County Council (LCC) is committed to the prevention of injury and ill health to its personnel and persons affected by our activities. This is achieved by setting out health and safety related objectives, measurement of performance, taking measures to ensure compliance with legal requirements and compliance with national guidance applicable to the fire service. LCC is committed to document, implement, maintain and continually develop its Occupational Health and Safety Management System in accordance with the requirements of the Local Authority Occupational Health and Safety Management Systems Requirements and the Safety, Health and Welfare at Work Act 2005.

Section 10: Communications

10.1 Response to Calls

Section 10(2)(c) of the Fire Services Act, 1981 & 2003 states that:

'A fire authority shall -

(c) make adequate provision for the reception of and response to calls for the assistance of the fire brigade.'

In order to fulfil this function Longford Fire Authority has entered into agreement with Dublin City Council under Section 85 of the Local Government Act 2001 for the provision of a call-taking and mobilisation facility for fire services in the County of Longford. This service is provided at the East Region Communications Centre (ERCC) and is located at Tara Street Fire Station, Dublin. It is managed by a committee including representatives of the National Directorate for Fire and Emergency Management and the chief executives from each of the participating authorities.

The Management Committee is supported by the Technical Liaison Group (TLG) that consists of chief fire officers from the participating authorities, the communications centre manager, a representative from the NDFEM and a member of the Management Committee (chairman).

The NDFEM has put together a CTri Project Team to move away from the current mobilisation system based on three distinct regions and instead to develop a single national system, based on a central technical platform, operated, governed and funded on a national basis. This single national system is being developed at present and Longford County Council will be moving to the new system during the lifetime of this plan.

All requests for the attendance of the fire brigade are directed via the 999/112 Emergency Call Answering System (ECAS) to the ERCC. The ERCC uses a computerised system (involving an address database, a log of all available appliances and a pre-determined attendance for each address and incident type) to determine the appropriate response. The appropriate fire brigade(s) are then alerted by the ERCC. Longford Fire Authority retained personnel are notified of call-outs by means of pagers (upon receipt of a page, they report to the fire station and respond as required). A printed message with the call details is sent to the fire station.

It is important to note that while the ERCC provides a call-taking and mobilisation service, it has no command function. Command is always exercised by the Officer in Charge (OIC) as defined by the Fire Services Acts 1981 and 2003.

10.2 Communications Equipment

Longford County Fire & Rescue Service utilises a broad range of communications equipment in order to facilitate the delivery of an effective and efficient service. The equipment utilised and the location of such equipment is detailed below.

10.2.1 Equipment located in Fire Stations

- Base VHF Radio
This is a mains operated radio in the station. This radio is can be used to communicate with both the appliances as well as to ERCC. This will migrate to a Tetra based system during the lifetime of this plan.
- RPE1660 Firecoder
This is a combined GD-92 receiver and MG4 encoder. It receives notification of an incident from ERCC and its function is to convert the signal and relay this to the MG4 transmitter. IP (Internet Protocol) is the primary bearer (carrier) of ERCC call-outs to all fire stations. GSM and PSTN (dialup) are used as the secondary and tertiary bearers respectively, i.e. if IP goes down, crews will be alerted using GSM, in the event that IP and GSM both go down at the same time, crews can still be alerted via a landline PSTN connection.
- MG4 Transmitter
The MG4 transmitter will set off the fire-fighter's alerters on receipt of communication from the ERCC radio in the event of an incident.
- Fax Machine (Cabinet Printer)
The fax machine is used primarily for the receipt of incident details that is sent by ERCC. It is also used in the event that chemical data / response advice is requested from ERCC in the event of a chemical incident. ERCC will fax the relevant chemical data to the station.
- Station Telephone
The station telephone is a landline used as a back-up means of communications to ERCC, for administration purposes and for communication from station to an incident scene.
- UHF/VHF Repeater
There is 1 No. UHF/VHF mobile repeater in Longford Fire Station. It has two functions, firstly to boost the UHF signal strength at an incident and secondly to enable officers to talk directly to ERCC when attending an incident via their hand-portable radio. The VHF side of this repeater will be superseded by the Tetra system when it comes on stream during the lifetime of this plan.
- Computer and Printer/Scanner
Each fire station is going to be equipped with a computer with internet access and a multifunction printer which also has a multi-page scanning facility. The computer can be accessed by Junior and Senior Officers and will provide access to email, internet and information stored on a county council SharePoint site.

10.2.2 Equipment located in an Appliance

Class B Fire Appliances

- VHF Mobile Radio

These radios are used to communicate with ERCC. The radios can also be used to communicate with other appliances that have VHF mobile radios. This will migrate to a Tetra based system during the lifetime of this plan.

- Fixed Mobile Phone

The fixed mobile phone is used to compliment the radio system in areas of poor coverage and also in the relaying of sensitive communication.

- Hand-Held UHF

These mobile radios are used by the fire-fighters for incident ground communications.

10.2.3 Equipment used by Fire-fighters

- Alerters

The alerter (also referred to as a pager) is carried by all fire-fighters and is the means by which the fire-fighter is informed of an incident. The MG4 transmitter relays the message from the RPE1660 Firecoder to the alerter. The alerters are programmed to recognise only the signal from the MG4 transmitter in their home station.

10.2.4 Equipment used by Senior Officers

- Mobile Phones

All Senior Fire Officers carry mobile phones. These can be used for communication with the appliances as well as with the Stations.

- Tetra

With the implementation of the CTri Project Senior Fire Officers will have access to a tetra handset for communication with the control centre, the incident scene and fire station

- Satellite Phone

A Satellite Telephone is available for the Rostered Senior Fire Officer in the event of a failure of the mobile phone & for major emergency management use.

- Tablet with Mobile Data

A data enabled tablet is available in Longford Town Fire Station for deploying to an incident for use by the onsite coordinating group in the event of a major emergency or by fire service personnel as required.

10.3 Strategic objectives for this period of the Plan:

Longford County Council will remain as a Fire Authority within the East Region Communications Centre (ERCC). The fire service will work with ERCC and the CTri Project Team on the roll out of the new single national mobilisation system and the Tetra Radio System to the fire service during the life of this plan.

Page intentionally left blank

Section 11: Operational Procedures

11.1 Fire Operations

Traditionally, fire brigades were formed to attend at incidents involving fires. However, the role of fire brigades has expanded considerably over the years. Section 25 of the Fire Services Acts, 1981 & 2003 empowers Fire Authorities to attend emergency incidents other than those involving fires. Section 25 of the Fire Services Act, 1981 & 2003, states that:

‘— A fire authority may carry out or assist in any operations of an emergency nature, whether or not a risk of fire is involved, and a fire authority may accordingly make such provision for the rescue or safeguarding of persons and protection of property as it considers necessary for the purposes of that function’.

Longford County Fire & Rescue Service generally attends at incident types as detailed in accordance with the Pre-Determined Attendance criteria outlined in the East Region Communications Centre – *Fire Brigade Mobilising Procedures*. These procedures are generally standard across the Eastern Region.

Operational guidance on how to deal with the above core & discretionary incident types is provided by the NDFEM in various procedural and guidance documents. The following is a list of guidance documents used by Longford County Fire & Rescue Service to provide guidance on dealing with these incidents:

- Fire-fighter Handbook
- Junior Officer Handbook
- Senior Officer Handbook
- National Incident Command System
- Fire Service Ancillary Safety Statement Template
- The Use of Breathing Apparatus in the Fire Service
- Road Traffic Accident Handbook
- Guidance on the Provision and Assessment of BA Training
- Guidance for Compartment Fire Behaviour Training
- Guidance on Emergency Traffic Management (ETM) by the Fire Service at Road-based Incidents
- Standard Operational Guidance (SOG)
- Standard Specification for Fire Appliances
- List of Brigade Instructions

In addition, Pre-Incident Planning is carried out by Longford County Fire & Rescue Service on premises / facilities that are deemed to be a specific risk. Pre-Incident Plans (PIPs) are prepared in advance of an incident and contain an overview of the facility and tabulated information about the risk, summarising the critical aspects of a building from a fire brigade response.

11.2. Strategic objectives for the period of this Plan:

Longford County Council (LCC) will attend at incident types as detailed in accordance the Pre-Determined Attendance notified to ERCC. LCC will continue to work in accordance with the National Incident Command System and Standard Operational Guidance (SOG) Documents that have been prepared by the National Directorate for Fire and Emergency Management (NDFEM) and adapted for local use.

Section 12: Operational Standards

The NDFEM provides detailed guidance in relation to operational standards for the Fire Service. The guidance has been provided taking cognisance of the Safety, Health and Welfare at Work Act 2005. The following process has been adopted by Longford County Fire & Rescue Service in determining the standards of fire cover that are to be applied in County Longford:

12.1 Area Risk Categorisations

Area Risk Categorisation is a mechanism for determining a logical risk category for each station ground. It relies on a variety of data sources including census data, the use of local knowledge and operational intelligence, Risk Based Approach reports, the major emergency management risk assessment, and other readily available sources within the local government system, to provide an adequate picture to determine the appropriate risk categorisation for each fire station ground.

The outcomes of the risk categorisation of a fire station ground will influence the decision-making process on issues such as:

- Response capabilities provided in a fire station
- Special services and special appliances
- Fire station staffing
- Standards of fire cover throughout the County
- Community Fire Safety Programmes
- Training Programmes

Area Risk Categorisation is, by its nature, a continuous process and a Station Ground may change its categorisation, either to a higher or lower level, if the population, number of incidents, or the level of risk in that area, changes over time. Any changes to a Station Ground’s area risk categorisation will be reflected in updated versions of this Plan. Table 12.1 contains a Summary of the overall Risk Grading Categorisation of each Station Ground.

Station Area	Area Risk Designation	Risk Category
Longford Town	C2	Medium
Granard	D2	Low
Ballymahon	D2	Low
Edgeworthstown	D1	Low
Lanesborough	D2	Low

Table 12.1 Station Area Risk Categorisations

A report prepared by the Chief Fire Officer in 2014 was submitted to the External Validation Group setting out the Area Risk Categorisation for each Station Ground in Co. Longford.

12.2 Pre-Determined Attendances

ERCC's *Fire Brigade Mobilising Procedures* identifies the normal Pre-Determined Attendance for each incident (number and type of fire appliance that will respond). ERCC will mobilise Fire Appliances for Longford County Fire & Rescue Service in accordance with these Pre-Determined Attendances. The Predetermined Attendance List for incidents in County Longford is listed in Appendix E.

Station boundaries will be reviewed in accordance with analysis from the East Region Communications Centre and Longford County Fire & Rescue Service will assist in updating station boundaries to ensure that the Fire Appliances that can attend an incident in the shortest period of time are those mobilised.

12.3 Weight of Attack

The following table summarises the weight of attack (Class B Appliances and Crew) and the corresponding staffing arrangements that are in place in these stations.

Station Area	No. of Class B Appliances	No. of Personnel	Crewing Arrangements (Retained duty system)
LD11 Longford Town	2	13	13 to give a minimum of 9.
LD12 Granard	1	9	9 to give a minimum of 6.
LD13 Ballymahon	1	9	9 to give a minimum of 6.
LD14 Edgeworthstown	1	9	9 to give a minimum of 6.
LD15 Lanesborough	1	9	9 to give a minimum of 6.

Table 12.2 Station Area Weight of Attack

12.4 Mobilising Times

The NDFEM provides guidance regarding expected and target times for the first fire appliance to mobilise to an incident. It is expected that the average time for the first fire appliance to mobilise from any fire station should be less than 6 minutes for retained brigades with the National target time being 5 minutes. The following Table shows that current average time to mobilise from each Fire Station in the Fire Authority:

	2017	2016	2015	2014	2013
Average time taken, in minutes, to mobilise retained fire brigades in respect of fire	6.2	5.92	6	5.3	5.53
Average time taken, in minutes, to mobilise fire brigades in respect of all other emergency incidents	7.57	6.22	6.01	5.31	5.23

Table 12.3 Average Time to Mobilise fire brigades in County Longford

12.5 Travel Times

The NDFEM provides guidance on target travel times for the first and subsequent Class B pumping appliances to arrive at primary and secondary incidents. The targets are for a 75% confidence level for primary and secondary incidents, i.e. it is expected that the targets would be achieved on average in three out of four mobilisations by the fire service.

The following Tables summarise the target travel time for various appliance types and the average travel time for the first Class B Fire Appliance for all incident types is shown as an indicator of current travel times.

Risk Category	Number of Class B Appliances	Travel Times (for 75% of Turn-outs)
Medium	1 st Appliance	10 minutes
	2 nd Appliance	20 minutes
	3 rd Appliance	30 minutes
Low	1 st Appliance	20 minutes
	2 nd Appliance	40 minutes
Very Low	1 st Appliance	30 minutes
	2 nd Appliance	60 minutes

Table 12.4 Guidance for Target Travel Time Class B Appliances

The following guidance is also provided in relation to the travel times for special appliances, specifically Aerial Appliances, Emergency Tender Appliances, Incident Command Units and Water Tankers at Fire Stations.

Risk Category	Special Appliances	Travel Times (for 75% of Turn-outs)
Medium	Aerial	30 minutes
	Emergency Tender	45 minutes
	Incident Command Unit	75 minutes
	Water Tanker	75 minutes
Low	1 Aerial	60 minutes
	1 Emergency Tender	60 minutes
Very Low	N/A	N/A

Table 12.5 Guidance for Target Travel Time Special Appliances

12.6 Attendance Time at Incidents

The NDFEM recommends that Fire Services should continue to record the percentage of cases, both fires and other emergencies, by station and for the overall Fire Authority where the Fire Authorities attend incidents within 10 minutes, between 11 and 20 minutes and greater than 20 minutes. The current times, averaged over the years 2007 - 2016 inclusive are as follows:

Year	% of fire incidents attended within specified timeframes for Co. Longford			% of all other emergency incidents attended within specified timeframes		
	<10 Minutes	10 – 20 Minutes	> 20 Minutes	<10 Minutes	10 – 20 Minutes	> 20 Minutes
2017	47.15 %	44.49 %	8.37 %	21.92 %	61.64 %	16.44 %
2016	45.36 %	45.36 %	9.27 %	27.27 %	56.36 %	16.36 %
2015	42.28 %	50.67 %	7.05 %	29.85 %	59.70 %	10.45 %

Table 12.6 Percentage of Incidents Attended for specified time frames

The above data is generated by the East Region Communications Centre.

Longford County Fire & Rescue Service aims to increase the percentage of incidents attended within 10 minutes and to decrease the % in the other 2 categories. These trends will be monitored during the life of this plan. It is important to note however that County Longford covers a wide geographic area and Longford County Fire & Rescue Service exercises no control over where an incident occurs.

12.8 Large Scale Incidents.

The NDFEM provides guidance regarding a response to Large Scale Incidents (these are incidents other than Major Emergencies which require large resources or a proliferation of smaller incidents). Depending on the designated Risk Categorisation of an area / station ground, Fire Authorities are required to consider their ability to respond to a Large Scale Incident in accordance with the guidance provided.

Longford County Fire & Rescue Service has considered this guidance and having considered its own availability of Class B appliances and those of neighbouring Fire Authorities is satisfied that it can mobilise Class B appliances, Special Appliances and an Incident Command Unit in accordance with the NDFEM guidance regarding Large Scale Incidents.

12.9 Strategic objectives for the period of this Plan:

LCC will attend at incident types as detailed in accordance the Pre-Determined Attendance notified to ERCC. LCC will continue to work in accordance with the National Incident Command System and Standard Operational Guidance (SOG) Documents that have been prepared by the National Directorate for Fire and Emergency Management (NDFEM) and adapted for local use.

Section 13: Fire Safety – Fire Prevention & Building Control

In addition to the specific areas listed under Section 26 of the Fire Services Acts, 1981 & 2003, this plan will also take into consideration the substantial volume of Technical Fire Safety duties undertaken pursuant to both the Fire Services Acts 1981 and 2003 and the Building Control Acts 1990 and 2007. In addition, the ongoing Community Fire Safety programme is outlined, which is also targeted at reducing fires and fire fatalities. Fire Prevention staff advise on current fire safety standards required for proposed and existing non-domestic buildings within the County administrative area.

13.1 Statutory Functions

The following Acts set out statutory functions of Longford County Council as the Fire Authority and the Building Control Authority:

- The Fire Services Acts 1981 and 2003
- The Building Control Acts, 1990 and 2007

13.1.1 Providing advice to Longford County Council as the Planning Authority

Under Section 13 of the Fire Services Acts, 1981 & 2003, the Fire Authority provides advice to the Planning Authority on commercial and multiple housing applications. The number of applications dealt with by the Fire Prevention Section under Planning Acts for the past 5 years are as follows:

Year	2017	2016	2015	2014	2013
Number of Planning Referrals Processed	51	34	42	14	13

Table 13.1 Number of Planning Referrals Processed

13.1.2 Providing advice under Section 18 of the Fire Services Acts, 1981 & 2003

The Fire Authority are authorised to give advice in relation to fire safety and authorised persons are empowered under Section 18 of the Fire Services Acts, 1981 & 2003 to inspect non-domestic premises. The Fire Services Acts 1981 and 2003 applies to:

- Residential premises other than a single family dwelling house
- Institutions providing treatment or care
- Premises used for entertainment, recreation or education
- Retail and industrial buildings
- Any workplace

Inspections are prioritised using a hierarchical risk methodology, particularly nursing homes and other premises providing residential care. The inspection of these premises has started and will be repeated on an ongoing cyclical basis.

13.1.3 Processing of Fire Safety Certificates under the Building Control Acts, 1990 and 2007

The Fire Authority process Fire Safety Certificates pursuant to the Building Control Acts, 1990 and 2007. The Fire Authority assesses the applications for compliance with the functional requirements of the Building Regulations. The number of Fire Safety Certificates processed are set out in the table below:

Year	2017	2016	2015	2014	2013
No. of Fire Safety Certificate Applications Processed	54	27	22	25	37

Table 13.2 Number of Fire Safety Certificate Applications Processed

13.1.4 Inspections of Licensed Premises under Section 24 of Fire Services Acts, 1981 & 2003

Under Section 24 of the Fire Services Acts, 1981 & 2003, and associated Licensing Acts the Fire Authority carry out inspections of Licensed Premises and advise the Court on the suitability of the premises, with respect to fire safety, for the proposed licensed use. The type of licences that the Fire Authority are notified of and make comment on, are as follows:

- Confirmation of Transfer of On-Licence
- Music and Singing Licence
- Annual Dance Licence
- Club Renewal
- Temporary Dance Licence
- Lottery Licence (Bingo)

The number of Licensing Applications received and inspections undertaken by Longford County Fire & Rescue Service in the past 5 years are as follows:

Year	2017	2016	2015	2014	2013
No. of Licence Applications Processed	39	45	58	44	54
No. of Licensed Premises Inspected	42	35	48	22	35

Table 13.3 Number of Licence Applications Received and Inspection Undertaken

13.1.4 Inspection under Dangerous Substances Act, 1972, and associated regulations.

The Fire Authority carries out inspections of petroleum installations, retail and bulk, under the Dangerous Substances Act, 1972:

Year	2017	2016	2015	2014	2013
No. of DSA Licence Applications Received	1	2	4	1	0
No. of Licenses Issued	1	2	2	1	0

**Table 13.4 Number of Dangerous Substance Licence
Applications Received and issued**

13.1.6 During Performance Inspections of Places of Public Assembly

In the recent past, during Performance Inspections (DPI) were carried out on a reactive basis, such as a response to a complaint or request by event management. During the lifetime of this plan, it is proposed to engage resources proactively in an annual programme of during performance inspections, with subject premises being selected using a hierarchical risk methodology.

13.1.7 Inspection of Buildings (general)

Authorised Persons are empowered under the Fire Services Acts, 1981 and 2003 to undertake inspections of any non-domestic building as referred to in sub-section 13.1.2.

Non Statutory Functions

13.2.1 Large Crowd Events

Longford County Council works with event organisers and other agencies (An Garda Síochána, Health Services Executive) in pre-planning for large crowd events.

Events that the Fire Authority has had an advisory role in the recent past:

- Hype Festival (Longford Town)
- Lough Ree Monster Festival (Lanesboro)
- Marquee in Drumlish festival
- Longford Festival (Longford Town)

13.2.2 Community Fire Safety (CFS)

Reducing fires deaths is an objective for the Fire Authority. Nationally there has been a welcome overall downward trend in terms of fire deaths per million of population in Ireland. At 6.9 deaths/ per million of population the fire death rate now is almost half what it was fifteen years ago. The rate of fire deaths in Longford over the past 10 years has been 30% higher than the national average with older people living alone being a vulnerable group. Practically all deaths relating to fire in Ireland have been occurring in domestic dwellings which is also reflected in the statistics for county Longford. The fire deaths for the last 10 years are as follows:

	2017	2016	2015	2014	2013	2012	2011	2010	2009	2008
Co. Longford	0	1	0	1	0	0	0	0	2	0
Nationally	40	21	41	37	24	28	38	39	42	35

Table 13.6 Fire Deaths per year over past 10 years

Longford County Fire & Rescue Service promotes fire safety awareness in the community through initiatives during fire safety week including local interviews, press statements and social media coverage. Throughout the year presentations are delivered to community groups on request.

13.2.3 Primary School & Halloween Programme

Since 2006, Longford County Council has been delivering the NDFEM Primary Schools Programme on an annual basis. It is targeted at 3rd class pupils, approximately 9 years old. Each of the primary schools are visited by local fire brigade personnel who deliver the presentations. As part of the programme, the pupils are made aware of the dangers of fire, the importance of working smoke alarms and complete a home fire safety checklist.

Longford County Fire & Rescue Service also participates in delivering safety awareness through the Halloween programme delivered with the HSE and Gardai to young people.

13.2.4 Smoke Alarm Project

Longford County Council is working towards the objective of having all homes protected by working smoke alarms. Since 2006, newly constructed homes are required to have a series of hardwired smoke and heat detectors installed. This programme is targeted at homes constructed prior to 2006, and where vulnerable persons may reside. With the assistance of Department funding, Longford County Council have worked with the HSE community services, local Gardaí and community groups to promote the smoke alarm scheme which has provided smoke detectors to approximately 320 homes over the last ten years. Smoke alarms have been made available to:

- The elderly or mobility impaired
- The Travelling Community
- Persons living alone

13.2.5 Longford Road Safety Project

Longford County Council continues to support and assist the Longford Road Safety Committee in an effort to reduce casualties on Longford roads. The education and provision of information to all persons within the community, by means of partnerships and public awareness campaigns and the *Road Safety Road Show*, have been ongoing for a number of years. The Longford Road Safety Plan outlines the strategic aims and objectives of Longford County Council from 2015 to 2020. The Plan identifies the many facets of the road safety strategy with regard to Engagement, Education, Engineering, and Enforcement.

Road fatalities in Ireland are on average 4 per 100,000 inhabitants. In Longford the rate of road fatalities is significantly higher due to the network of national roads passing through the county. It is hoped that the numbers of fatalities and persons seriously injured as a result of road traffic collisions will continue to be reduced by the endeavours of Longford County Council and the other stakeholders and partnerships that have been established.

RSA Road Casualty Statistics		2014	2013	2012	2011	2010	Total
Longford	Persons Killed	4	2	7	2	2	17
	Persons Injured	102	86	100	67	106	461
Nationally	Persons Killed	193	188	163	186	212	942
	Persons Injured	8,079	6,880	7,942	7,235	8,270	38406

Road Casualties and Collisions in Ireland 2014, RSA

13.3 Strategic objectives for this period of the Plan

LCC intends to comply with all relevant Fire Prevention and Building Control Legislation and Regulations during the life of this plan. Higher risk commercial premises will be targeted for inspections through a risk based approach. LCC will continue to work with other agencies and community stakeholders to target higher risk homes providing smoke alarms for these homes and promoting awareness of how the risk of fire can be reduced in domestic dwellings. LCC will continue to support and assist the Longford Road Safety Committee in its endeavours to reduce death and injury on Longford roads due to road traffic collisions.

Section 14: Major Emergency Management

As previously outlined in Section 1 above, although the legislation only requires this plan to deal with arrangements made with regard to fire and emergency operations, this plan will also take into consideration the substantial volume of work carried out by Longford County Council, including the Fire Services Section, in relation to Major Emergency Management.

14.2 Background to Major Emergency Planning

The National Framework for Major Emergency Management (2006) replaced the Framework for Co-Ordinated Response to Major Emergency, which underpinned Major Emergency preparedness and response capability since 1984. The 2006 Framework was prepared under the aegis of the Inter-Departmental Committee on Major Emergencies and was approved by Government. It enables the three principal emergency response agencies, An Garda Síochána, the Health Service Executive and the Local Authority to prepare and make a co-ordinated response to Major Emergencies including fires, transport accidents, hazardous substances and severe weather.

In September 2008 a new Major Emergency Plan was released consistent with 'A Framework for Emergency Management' (2006) in accordance with the guidance provided by the NDFEM in relation to Major Emergency Management. This Plan was subsequently reviewed and updated, most recently in February 2018.

The purpose of the Major Emergency Plan is to put in place arrangements that will enable Longford County Council to effectively manage a Major Emergency in co-operation with other Principal Response Agencies, An Garda Síochána and the Health Service Executive.

14.3 Inter-Agency Arrangements

Any one of the Principal Response Agencies (PRA) may declare a major emergency and the mobilisation procedures of the Major Emergency Plans of the three relevant agencies will be activated immediately they are notified of the declaration. The Major Emergency Plan of each agency sets out that agency's response, as well as its contribution to the combined response of all agencies.

The other PRAs responsible for Emergency Services in county Longford are:

- Health Service Executive (East)
- Longford/Roscommon Garda Division

14.4 Longford County Fire & Rescue Service Response to a Major Emergency in County Longford

In the event of a major emergency, the primary role of Longford County Council is to ensure life safety by providing a top class emergency service from all sections within the Council, including the Fire Service. In general, the Fire Service will be the first section of the Local Authority to respond to any major emergency. The mobilization procedure and Longford County Council's main roles in the event of a major emergency occurring in County Longford are detailed in the Longford County Council Major Emergency Plan. Further sub plans have been developed which specifically deal with flooding and severe weather emergencies.

The Fire Service will prepare itself for large scale and inter-agency operations through participation in appropriate exercises. The Fire Service will also work with the other Council Sections and Civil Defence as appropriate, in a co-ordinated fashion in the event of a major emergency occurring. The Fire Service meet with local agencies and community stakeholders to promote community awareness and resilience to deal with severe weather.

14.5 Longford County Council's Major Emergency Management Committee

The Major Emergency Management (MEM) Committee is responsible for the ongoing overview of major emergency management within the Local Authority. The group has membership from all sections of Longford County Council including the Fire Authority. The facilitator to the group is provided by the Fire Authority. The group reviews the Major Emergency Plan and associated sectional action plans as appropriate, and makes arrangements for staff with key roles to attend MEM training and participation in Major Emergency Exercises.

14.6 Co-Ordination Roles and Facilities

The MEM Plan identifies staff with key roles on coordination groups in the event of a major emergency. The Chief Executive, or alternate, will represent Longford County Council on the Local Co-Ordination Group.

The designated Local Co-ordination Centre for County Longford is Longford Fire Station. Rooms in this building have been designated as meeting spaces for the Local Co-ordination Group, the Local Authority Crisis Management Team, as Support Offices for both the HSE and An Garda Síochána and as a Media Briefing Room. The necessary ICT and other equipment are stored within the building

Both the On-Site and Local Co-Ordination groups shall be assisted by the Crisis Management Team. This team shall meet as required at the council Chamber in Áras an Chontae in the event of a major emergency and shall provide technical and administration support to both the On-Site and Local Co-Ordination groups. Further details regarding the above are provided in the Major Emergency Plan for Longford County Council.

14.7 Major Emergency Management in the Midlands Region & National Groups

Longford County Council is part of the Midlands Region for Major Emergency Planning. The Principal Response Agencies responsible for Major Emergency Management in the Midlands Region are as follows:

Local Authorities	Longford County Council
	Westmeath County Council
	Offaly County Council
	Laois County Council
Health Services Executive	HSE East
An Garda Síochána	Longford/Roscommon Division
	Westmeath Division
	Laois/Offaly Division

There is both a Steering Group and a Working Group for Major Emergency Management in the Midlands Region. Longford County Council is represented on the Midlands Regional Steering Group by the Director of Emergency Services and is represented on the Regional Working Group by the Chief Fire Officer and the Assistant Chief Fire Officer with responsibility for Major Emergency Management. The Defence Forces have a liaison representative on the midlands regional working group.

These Regional Groups in turn report into the National Working Groups. The National Working Groups have membership from the three Principal Response Agencies and the NDFEM. The Midlands is represented on the National Working Group by the Chairperson of the Regional Working Group.

14.8 Strategic objectives for this period of the Plan:

Longford County Council (LCC) will continue to prepare for large-scale and inter-agency operations through participation in appropriate training and exercises and maintaining suitable facilities for emergency coordination. Longford County Fire & Rescue Service will continue to participate on the Longford County Council Major Emergency Management Committee along with the participation on the Midlands Regional Working and Steering Groups as appropriate.

Appendix A - Glossary of Acronyms

ACFO	Assistant Chief Fire Officer
AGS	An Garda Síochána
BA	Breathing Apparatus
CAMP East	Computer Aided Mobilisation Project East - also known as ERCC
CFO	Chief Fire Officer
CVRT	Commercial Vehicle Roadworthiness Test
DHPLG	Department of Housing, Planning and Local Government
DPI	During Performance Inspection
ECAS	Emergency Call Answering System
ET	Emergency Tender
EVG	External Validation Group
HP	Hydraulic Platform
HSE	Health Service Executive
ICT	Information and Communications Technology
MEM	Major Emergency Management
NDFEM	National Directorate for Fire and Emergency Management
NICS	National Incident Command System
PIP	Pre-Incident Plan
PPE	Personal Protective Equipment
PRA	Principal Response Agency
RSA	Road Safety Authority
RSFO	Rostered Senior Fire Officer
RTC	Road Traffic Collision
SACFO	Senior Assistant Chief Fire Officer
SO	Station Officer
SOG	Standard Operational Guidance
SSO	Sub-Station Officer
ERCC	East Region Communications Centre

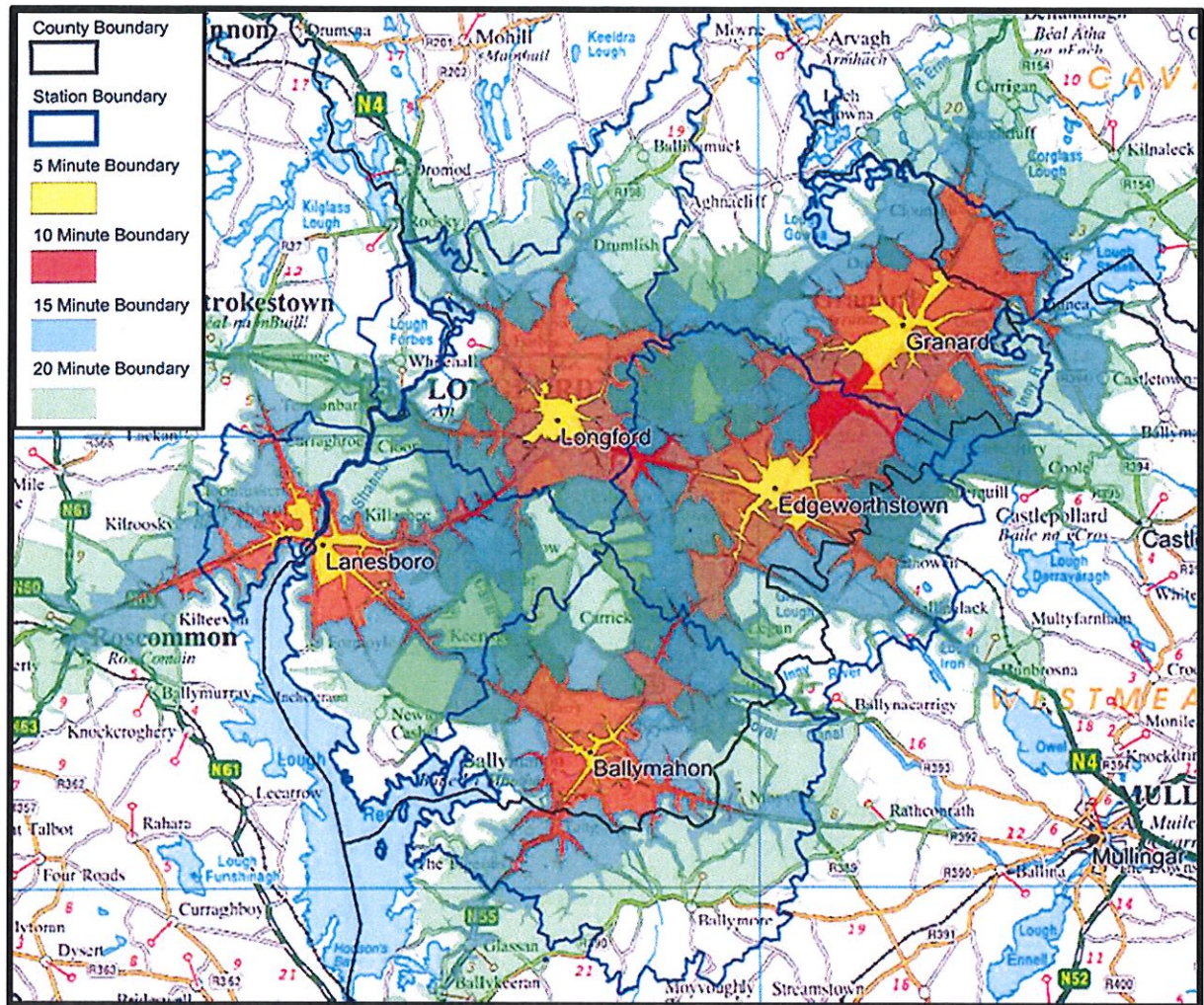
Appendix B: Fire Service Brigade Training Courses

Course	Anticipated Relevant Rank(s)	Personnel Requiring Course	Duration (days)	Refresher Interval	Duration of Refresher Course (Days)
Local Authority Induction	All Personnel	All New Personnel	0.5	n/a	n/a
Manual Handling	All Personnel	Prior to any operational activity	0.5	3 Years	2 hours
Fire Fighter Recruits (NDFEM)	All Operational Personnel	All Ops Personnel	15	5 years	2 days (to be known as a Firemanship Refresher)
Working at Heights	FF, D/M, SSO & SO	All Ops Personnel	Included in FF Recruits	5 Years	Annually on Drill Night
RTC & Traffic Management	All Fire-fighters & Officers	All Ops Personnel	Included in FF recruit		1 day
Breathing Apparatus (NDFEM)	All Fire-fighters & Officers	All Ops Personnel within 1 Year	15	2 years	2 days
Compartment Fire Behaviour (NDFEM)	FF, D/M, SSO, SO	All Ops Personnel	Included in BA	4 Years	1 day
Critical Incident Stress Mgmt.	FF, D/M, SSO & SO	All Ops Personnel	½	3 Years	2 hours
National Incident Command System	All Fire-fighters & Officers	(Incorporated in FF Recruit and Senior Command Courses	1	5 Years	To Be incorporated into Firemanship Refresher Course
Cardiac First Responder (CFR)	FF, D/M, SSO & SO	Any personnel that administer CPR or operate a Defibrillator	1	1 Year	2 hours
Water and Flood Awareness	All Fire-fighters & Officers	Within 2 Years of commencing operational activity	1	4 Years	1
Hazardous Material – Awareness	All Operational Personnel	Within 2 Years of commencing operational activity	1	4 Years	1
Child safeguard training					
SOG Training	FF, D/M, SSO & SO	All over 4 year Programme	Various	4 Years	Various
CISM peer support	1 per station + Liaison Off.	On taking on Role	2	3 Years	2
Safety Representative	All Personnel	1 Per Station, On taking on Role			
Emergency First responders	All Operational Personnel	Any personnel that administer First Aid, minimum 4 per station	5	In accordance with most upto date PHECC Guidelines	
Water First Responders	All Fire-fighters & Officers	Minimum 4 per station			
Hazardous Material – Wearer	All Fire-fighters & Officers	All Fire-fighters & Officers within 4 years	3	4 years	2
Pump Operator	All Operational Personnel	All D/Ms and minimum 2 FFs per station	3	5 Years	2
Compressed Air Foam System (CAFS)	All Operational Personnel	Any personnel operating CAFS equipment	As recommended otherwise 2 Day	As recommended, otherwise every 5 years	As recommended, otherwise 1 day
ESDS Driving	All Operational Personnel	All D/Ms within 1 year of appointment + 2 per station	8	5 Years	
Aerial Appliance	FF, D/M, SSO & SO (Longford & Ballymahon)	Any aerial Appliance operators	As recommended	As recommended, otherwise every 3 years	As recommended, otherwise 3 days
Hiab Crane	FF & DM (Longford)	Any Hiab operators	As recommended otherwise 2 Days	As recommended otherwise every 3 years	As recommended otherwise 1 day
Winch	All Operational Personnel	All D/Ms & winch operators	2 hours	2 Years	2 hours

Core Training (Operational Personnel)

Specialist Training (Operations)

Appendix C County Longford Fire Station Drive Times



Drive Times from Fire Stations in County Longford (Source NDFEM)

Appendix D: County Longford Fire Brigade Equipment

EQUIPMENT MAINTENANCE – CHECKING, TESTING, INSPECTING, SERVICING & RECORDING

Equipment	Station	Drill Night Functional Check	After Use	Weekly Driver	Standard Tests	Periodic Test (frequency months)
Vehicles	All	Every Drill	✓			External (6)
Aerial Appliance	LD11	Alternate	✓			External (12)
Alerters	All	Every Drill				
Hand Portable Radios	All	Every Drill			Annual	
Thermal Imaging Cameras	All	Alternate	✓		Annual	

Breathing Apparatus						
Breathing Aparatus (B.A.) Sets	All	Every Drill	✓			Internal (12)
Breathing Aparatus Cylinders	All	n/a			Monthly	External (60)
B.A. Guidelines	All				Quarterly	
BAECO Kit	All	Alternate			Monthly	
B.A. Compressors						External (12)

Water Supply & Fire Fighting						
Main Pumps	All	Every Drill	✓		Quarterly	External (12)
Hosereels	All	Every Drill	✓		Quarterly	
Hoses – Delivery (incl. CAFS)	All				Annual	
Hoses – Suction	All				Quarterly	
Portable Pumps (LPP)	All	Alternate	✓		Quarterly	External (12)
Main Pumps CAFs	All	Alternate	✓			External (12)
Branches: Foam & Water	All				Annual	
Breaches: Collecting/Dividing	All				Annual	
Standpipes (incl. Extensions, Keys & Bars)	All					
Stirrup Pumps	All	Alternate	✓		Quarterly	
Hearth Kit & Hand Tools	All		✓			
Fire Extinguishers [Appliances]	All	Alternate				Internal (12)
Generators – Portable	All	Alternate	✓		Annual	
Pumps - Floating	LD11				Quarterly	
Positive Pressure Ventilation (PPV) Fan	All	Alternate	✓		Annual	

Ladders, Access Platforms, WAH & Rope Rescue						
Ladders: 13.5, 10.5, Double/Treble Extension, Roof, Telescopic	All				Quarterly	External (12)
Ladders - Gantries	All				Quarterly	External (12)
Fall Arrest (WAH) Equipment	All	Alternate	✓		Quarterly	External (6)

Equipment	Station	Drill Night Functional Check	After Use	Weekly Driver	Standard Tests	Periodic Test (frequency months)
Rescue						
HIAB (on Emergency Tender)	LD11	Alternate	✓	✓		External (12)
RTC Hydraulic Equipment: Rams & Extensions, Spreaders, Cutters, Pumps, Hand/Foot Pumps, Hydraulic Hoses, Door Opener	All	Alternate	✓		Annual	External (12)
Air Lifting Equipment: Mats, Controllers & Regulators	LD11 & LD14	Alternate	✓			External (12)
RTC Ancillary Equipment: Airbag Restraint Kits, Blocks, Step Chocks, Wedges, Sill Supports	All		✓			
Vehicle Stabilisation Struts	All					Internal (12)
Winches	All	Alternate	✓			External (12)
Chains	All					External (12)
Reciprocating Saws	All		✓			
Road Lights	All					
Road Signs	All					
Portable Flood Lighting - Plant	All	Alternate	✓		Annual	
Portable Flood Lighting - Hand	All	Alternate	✓			
Battery Tools – Impact Wrench	All	Alternate	✓			
Consaw	All	Alternate	✓			
Chainsaw	All	Alternate				
Bolt Cutter	All				Annual	
Glass Management Kit	All		✓			
Lifejackets (PFD)	All		✓		Annual	External (12)
Reach & Rescue Poles	All					
Wading Raft	LD11		✓			
Floating Rescue Throw Line	All		✓			
General Purpose Line	All		✓			
First Responder Bags	All	Alternate	✓			
Defibrillators [AED's]	All	Alternate	✓	✓		
Oxygen Cylinders	All					External (60)
Spinal Board	All	Alternate	✓			
Basket Stretcher	LD11	Alternate	✓			
CPC – Splash Suits	All		✓		Annual	External (12)
Decontamination Shower	All				Annual	
Gas Detectors	LD11				Annual	External (6)
Spill Management Kit	All					
Torches / Lamps	All					
Slings	All					External (6)
Shackles	All					External (6)

Appendix E: Pre-Determined Attendances (PDAs)

Incident Type	PDA
Fire/Aircraft	A1 X 1, RSFO
Light aircraft	A1 X 1, RSFO
Fire/Alarm Activation	A1 X 1
Fire/Bus/Coach	A1 X 1, RSFO
Fire/Car	A1 X 1
Fire/Caravan	A1 X 1
Fire/Chimney	A1 X 1
Fire/Domestic	A1 X 2, RSFO
Fire/Domestic, Persons Reported	A1 X 2, RSFO
Fire/Fire	A1 X 1
Fire/Forest	A1 X 1
Fire/Gorse	A1 X 1
Fire/Grass	A1 X 1
Fire/Controlled Burning	None
Fire/Hay/Barn	A1 X 1
Fire/Industrial	A1 X 2, RSFO
Fire/Institutional	A1 X 2, RSFO
Fire/Motorcycle	A1 X 1
Fire/Oil/Petrol	A1 X 1
Fire/Small/Bin/Skip	A1 X 1
Fire/Smoke Issuing	A1 X 1
Fire/Train - Rail Accident	A1 X 1, RSFO
Fire/Truck	A1 X 1
Fire/Tunnel	A1 X 1

Incident Type	PDA
S/S Alarm/Carbon Monoxide	A1 X 1
S/S Ambulance Assist	A1 X 1
S/S Animal Rescue	None
S/S Bicycle Lock	None
S/S Confined Space Rescue	A1 X 1, RSFO
S/S Electrical	A1 X 1
S/S Explosion	A1 X 1, RSFO
S/S Flooding	RSFO
S/S Garda Assist	RSFO
S/S Gas Leak	A1 X 1, RSFO
S/S Hazardous Material Incident	A1 X 1, RSFO
S/S Highline Rescue	RSFO
S/S Lift Persons Trapped	A1 X 1
S/S LockOut	A1 X 1
S/S Make Scene Safe	A1 X 1
S/S Marine Emergency	A1 X 1
S/S Mountain Rescue	None
S/S Oil Spillage	None
S/S Other	RSFO
S/S River Rescue	A1 X 1
S/S RTA	A1 X 1, RSFO
S/S Smell of Gas	A1 X 1, RSFO
S/S Standby Aircraft Emergency	A1 X 1
S/S Trees down	None
S/S Water Leak	None

References

1. Fire Services Act 1981 & 2003
2. Keeping Communities Safe – A Framework for Fire Safety in Ireland (February 2013) – National Directorate for Fire and Emergency Management
3. Keeping Communities Safe – Research Document – Fire Services Task Analysis and Crewing Levels Version 2.2 (December 2013) – National Directorate for Fire and Emergency Management
4. Keeping Communities Safe – Fire Services Training Version 3.5 (December 2013) – National Directorate for Fire and Emergency Management
5. Keeping Communities Safe – Managing Safety in Fire Services Version 2.7 (December 2013) – National Directorate for Fire and Emergency Management
6. A Framework for Major Emergency Management – Department of the Environment, Heritage & Local Government
7. Risk Based Approach Report Version 1, 4th May 2012 – National Directorate for Fire and Emergency Management
8. Risk Based Approach Report Phase 1 – Supplementary Report, 5th June 2013 – National Directorate for Fire and Emergency Management
9. Minutes of Monthly Meeting of Longford County Council, 10th October 2018, Longford County Council