





County Longford PPN Submission to Draft Longford County Development Plan 2021-2027

Submitted by Siobhán Cronogue, PPN Development Officer on behalf of Longford PPN Secretariat and full membership
18/01/20

County Longford PPN is a network of 460 community, voluntary, social inclusion and environmental interest groups. We are the main community network that links Longford County Council and other decision-making agencies to the community. We welcome the opportunity to make this submission to the Draft Longford County Development Plan 2021 – 2027. PPN County and Municipal District Wellbeing Vision Statements developed by our members, PPN Disability Network consultations, PPN Environmental College consultations and PPN Sustainable Development Goal programme responses were the sources of this submission.

It is important to note that although we often think about wellbeing in terms of good mental and physical health, it can also describe the wider conditions we need as individuals and communities to have a better quality of life, healthier environment and increased prosperity. Considering all the aspects of community wellbeing together helps us to identify actions that can be undertaken by communities alongside local and national government. These ideas and suggestions for community wellbeing came from the PPN member groups in the three municipal districts as well as specific consultations named above. These are the people who will be most impacted by the implementation of the new Longford County Development plan and as such their suggestions deserve serious consideration.

<p>Land Use Zoning, Environment and Sustainability</p>	<p>Our towns and villages must be well maintained with buildings re-used to fulfil community needs.</p> <p>Waterways, rivers and the canal must be clean and developed and accessible to the community, while recognising that the primary aim of maintaining water bodies is to provide sustainable habitats for water-based species.</p> <p>Greenways, brownfield and heritage sites, woodlands, walkways and trails are developed and well maintained with minimal interference and effect on established habitats/ecosystems.</p> <p>Air pollution must be reduced with all county residents encouraged to use smokeless coal and to cease burning of peat briquettes and/or turf.</p> <p>Effective and consistent enforcement of the Smoky Coal Ban in Longford Town.</p>
---	--



County Longford PPN Submission to Draft Longford County Development Plan 2021-2027

Submitted by Siobhán Cronogue, PPN Development Officer on behalf of Longford PPN Secretariat and full membership
18/01/20

	<p>Flora and fauna need to be protected throughout the county, not just within areas recognised as ecologically sensitive, or who have already received ecological designations.</p> <p>Council land, unless required for other purposes, e.g., recreational and housing, should be allowed to rewild.</p> <p>Rewilding plans should include designated areas for pollinator friendly native flora, which may require initial manual seeding prior to self-seeding.</p> <p>As many of these areas as possible should be excluded from future residential or commercial use due to the establishment of vital habitats.</p> <p>Residents should be encouraged to allow their gardens/land to rewild, and/or to actively convert them to pollinator friendly spaces.</p> <p>We need to reduce waste production, while acknowledging that consumers are beholden to the types of packaging used by manufacturers.</p> <p>The council should actively engage with businesses and supermarkets to provide onsite recycling bins; to remove unnecessary packaging from products, e.g., fruit and vegetables; and to allow consumers use reusable containers when purchasing products from deli counters.</p> <p>The council should actively engage with manufacturers within the county to cease using non-recyclable packaging.</p> <p>The community needs to be supported to be self-sufficient in agriculture and horticulture.</p> <p>All Tidy Towns groups should be required to establish and maintain a community garden, which should include a composting facility.</p> <p>Fruit trees and bushes should be planted on suitable council land.</p> <p>Infrastructure and transport are solar powered reducing energy use.</p>
--	---



County Longford PPN Submission to Draft Longford County Development Plan 2021-2027

Submitted by Siobhán Cronogue, PPN Development Officer on behalf of Longford PPN Secretariat and full membership

18/01/20

	<p>There needs to be active education and the community must be informed and involved in protecting the natural environment.</p> <p>We must develop creative initiatives for renewable energy, water harvesting and conservation. All Tidy Towns groups should be required to establish a rainwater harvesting system. All commercial properties should be assessed for the installation of grey water harvesting systems.</p> <p>All future properties should have rainwater harvesting systems.</p> <p>All residential property owners should be encouraged to install water butts, and to use the water for outdoor cleaning, e.g., car and window washing, and watering of plants.</p> <p>As a community we need to be actively involved in the roll out of a waste management plan and process to address illegal dumping.</p> <p>There should be stricter oversight of domestic waste disposal and waste management depots.</p> <p>Old heritage buildings must be preserved and restored for community and tourism activities, including the purchase of heritage buildings/sites that are not being properly maintained, e.g., Carrigglass Manor and Ardagh House.</p> <p>Each town must have adequate green space, community gardens, cycle tracks, playground and wildlife areas (to include native flora)</p> <p>Education on the environment and sustainability must continue and be developed in all schools.</p> <p>Our community must be physically and digitally well-connected and integrated.</p> <p>Pollution of water bodies must be prevented, with support provided to current and future community groups focussed on water bodies to engage with landowners and implement site specific solutions.</p>
--	---



County Longford PPN Submission to Draft Longford County Development Plan 2021-2027

Submitted by Siobhán Cronogue, PPN Development Officer on behalf of Longford PPN Secretariat and full membership
18/01/20

	<p>Traditional local employment must be sustained and economically viable.</p> <p>We need more opportunities for new enterprises (commercial, community, etc.), including recognising the tourist opportunities of archaeological sites within the county, e.g., Inis Clothran (Quaker Island) on Lough Ree.</p> <p>Reduced rates and supports must be introduced so businesses /enterprises are sustainable.</p> <p>The hospitality and tourism sector must be developed to a high standard to accommodate visitors.</p> <p>High quality dedicated spaces need to be provided for community activities and support, and also for business development.</p> <p>Sustainable jobs and employment that provide good livelihoods need to be available along with opportunities for education, training and further skills development.</p> <p>There needs to be more opportunities and support for community enterprise, business and digital hubs.</p> <p>There needs to be accessible, affordable childcare to enable parents to access employment.</p> <p>There must be excellent broadband throughout the county.</p> <p>We must develop more comprehensive training programmes from pre-employment to outreach degree programmes.</p> <p>Support for volunteering as a steppingstone to training and employment needs to be developed.</p>
--	---



County Longford PPN Submission to Draft Longford County Development Plan 2021-2027

Submitted by Siobhán Cronogue, PPN Development Officer on behalf of Longford PPN Secretariat and full membership
18/01/20

	<p>Longford Municipal District needs to be developed as a hive of tourist attractions and activities. (e.g. Canal to Market Square)</p> <p>Infrastructure and Transport facilities need to be accessible to all.</p> <p>All new businesses and buildings must be accessible to people with disabilities. This needs to be addressed at the planning stage.</p> <p>It is important that LCC and community groups consult and collaborate successfully on local plans and projects in relation to how we grow the economy.</p>
<p>People, Towns & Villages</p>	<p>Strong community spirit must be nurtured, and all people empowered to participate and work together to contribute to their community.</p> <p>Dedicated, fit-for-purpose, multifunctional spaces and facilities need to be available for all groups in the community.</p> <p>Community centres must be affordable for community groups to sustain their work.</p> <p>All sectors of the community must be actively supported irrespective of age, gender, social status, ability, ethnicity, etc.</p> <p>Volunteering, networking and collaboration needs to be respected, recognised, celebrated and supported.</p> <p>All towns and villages must be safe and secure for all residents to live, work and play.</p> <p>Youth services and facilities need to be affordable and accessible to all.</p>



County Longford PPN Submission to Draft Longford County Development Plan 2021-2027

Submitted by Siobhán Cronogue, PPN Development Officer on behalf of Longford PPN Secretariat and full membership
18/01/20

	<p>Education and training supports need to be developed and in place to combat social exclusion and intergenerational unemployment.</p> <p>All social housing must be adequate, affordable, have supports and an outdoor space.</p> <p>All members of the community must have a place they call home and are treated with respect and supported if they don't.</p> <p>Outdoor healthy activities continue to be promoted and rolled out throughout the county.</p> <p>Walking/cycling trails are developed, with minimal interference to local habitats. Water fonts need to be placed along these trails.</p> <p>The current drug problem in areas of the county must be addressed.</p> <p>Anti-social behaviour must be addressed.</p> <p>The Longford Intercultural strategy needs to continue to be implemented and monitored.</p> <p>Access to Arts programmes are widely available.</p> <p>Intergenerational training through Men's and Women's Sheds should be supported.</p> <p>Regular exhibitions of the work of community groups showcased in the Backstage theatre should be promoted.</p> <p>Animal rights information is circulated to the community, understood and respected.</p> <p>Traditional skills and crafts are retained and promoted.</p>
--	---



County Longford PPN Submission to Draft Longford County Development Plan 2021-2027

Submitted by Siobhán Cronogue, PPN Development Officer on behalf of Longford PPN Secretariat and full membership
18/01/20

<p>Participation, Democracy and Good Governance</p> <p>What is necessary to ensure that our local government structures support the wellbeing of our community for this and future generations?</p> <p>What is necessary to ensure that we have a voice in the decisions that affect us and that all voices are being heard?</p>	<p>Irish language, music, dance, sports and place names are promoted.</p> <p>Irish culture is retained as well as including cultures of new communities.</p> <p>A well-resourced PPN is the structure that effectively represents the views of local community groups through continuous development, representation, information sharing and communication</p> <p>Longford PPN must continue to be supported by LCC in its development and work throughout the county.</p> <p>Councillors communicate effectively with the community through regular local open meetings and group consultations.</p> <p>Gender balance and diversity within our political arena is achieved and citizens outside of political families have equal opportunities.</p> <p>There is accessible, affordable childcare to support women’s participation.</p> <p>There must be an inclusive local democracy with support for the election of women, young people and people with disabilities.</p> <p>There needs to be ongoing training and education on local and national government structures so that the electorate can make informed choices at election time.</p> <p>Local Authority plans are integrated and clearly responsive to local needs.</p> <p>Local Authority staff contact details are easily accessible to the community, with all websites fully accessible for the visually impaired.</p>
---	---



County Longford PPN Submission to Draft Longford County Development Plan 2021-2027

Submitted by Siobhán Cronogue, PPN Development Officer on behalf of Longford PPN Secretariat and full membership
18/01/20

	<p>All State Agencies are welcoming and open and treat people with respect and empathy.</p> <p>Grant applications are announced in a timely fashion with criteria in a clear, understandable language.</p> <p>All council meetings are live streamed.</p> <p>There needs to be training programmes available to encourage people to become community activists.</p> <p>Everyone has an equal say in their community</p>
<p>Sustainable Development Goals (SDG)</p>	<p>Sustainable Development Goals must be a priority, and everyone needs to be encouraged to participate in their successful implementation.</p> <p>Sustainable Development Goals must be aligned to all Council plans and strategies.</p> <p>LCC must work with Longford PPN to promote and support the role out of SDG initiatives in the community and support the development of future projects.</p>
<p>Health</p>	<p>There must be affordable appropriate housing with additional supports that meet the needs of all members of the community including those with disabilities, older citizens, and vulnerable people, with community centres and open spaces in all developments.</p> <p>A broad range of accessible sporting and outdoor activity facilities must be available for all (e.g. safe walking trails, allotments, youth facilities).</p> <p>Rural isolation must be addressed through the provision of appropriate spaces and services that promote social interaction, information sharing and appropriate training.</p>



County Longford PPN Submission to Draft Longford County Development Plan 2021-2027

Submitted by Siobhán Cronogue, PPN Development Officer on behalf of Longford PPN Secretariat and full membership
18/01/20

	<p>Active promotion of positive mental health can help combat addiction and enhance wellbeing, with acknowledgment that Adverse Childhood Experiences (ACEs), living in poverty, and intimate partner and domestic violence are contributing factors to anti-social behaviour and mental and physical illnesses.</p> <p>There are systems in place that ensure protection and support for vulnerable members of the community.</p> <p>Older people must be supported to remain in their own homes through recognising and rewarding the role of carers and provision of accessible respite care.</p> <p>There should be no waiting lists for chronic health conditions (e.g. hip and cataracts). There must be local accessible general and mental health provision.</p> <p>All services and public spaces must have disability access and adequate public transport from rural areas.</p> <p>Young people must be encouraged to participate in youth groups, voluntary activity and use of outdoor sporting facilities.</p> <p>A broad range of accessible (competitive and non-competitive) sports programmes and facilities need to be available to the community.</p> <p>Infrastructure, transport, supports and services are in place for the physical and mental wellbeing of our elderly.</p> <p>Creativity programmes need to be made central to all support systems and services.</p>
--	--



County Longford PPN Submission to Draft Longford County Development Plan 2021-2027

Submitted by Siobhán Cronogue, PPN Development Officer on behalf of Longford PPN Secretariat and full membership
18/01/20

	<p>Accessible infrastructure, housing, community spaces, and public buildings for people with disabilities.</p> <p>A dedicated free or affordable community space needs to be available for community groups.</p> <p>Education on all topics must be easily accessible and affordable to all (sex/relationship education in schools, mental health, ageism, youth disability, etc.)</p>
<p>Green Infrastructure</p>	<p>The establishment of a Natural Burial Ground to provide green burial options.</p> <p>The establishment of natural wastewater treatment systems, e.g., constructed wetlands, and pond technology.</p> <p>Any wind or solar farms are required to be located in areas that are not ecologically sensitive.</p>
<p>Landscape Character</p>	<p>Facilitate the full restoration of all bogs throughout the county to provide support in mitigating flooding events, and the development of unique ecosystems and migratory paths, with full support of the Mid-Shannon Wilderness Park, including the relocation of the proposed Derryaard Wind Farm to a less ecologically sensitive area.</p> <p>Landowners whose properties include water bodies are required to establish borders of native flora along the water edge to help slow water runoff to prevent pollution and flooding events.</p> <p>The inclusion of the Ardagh Neighbourhood Park to the Important Strands of Trees; and a public call for additional location suggestions.</p>



County Longford PPN Submission to Draft Longford County Development Plan 2021-2027

Submitted by Siobhán Cronogue, PPN Development Officer on behalf of Longford PPN Secretariat and full membership
18/01/20

	Residential property and land owners are encouraged and supported to plant native tree species on their property, with focus on site specific requirements, such as water-loving species for properties prone to flooding or with a high water table.
--	---

LONGFORD MUNICIPAL DISTRICT WELLBEING VISION STATEMENT

"Longford Municipal District is open, accessible and inclusive regardless of age, gender, ethnicity, sexual orientation or ability. Its governance structures engage transparently and effectively with the community when developing policies and projects.

The Longford MD supports the quality of life and ongoing physical and mental health of the community through the provision of appropriate housing, services, supports, facilities and education for everyone. Community action is recognised and valued. Renewable energy is developed to sustain the community. There are clean waterways and rivers and the Longford section of the Royal Canal is re-opened and accessible to all. Longford MD is a centre of employment and tourism opportunities for the whole county."

GRANARD MUNICIPAL DISTRICT WELLBEING VISION STATEMENT

"Granard Municipal District has an outstanding natural environment with a strong inclusive community that values its history, culture and traditions while being open to others. The active partnership of the community and statutory structures ensures a high quality of life. There is appropriate housing for all people with access to community spaces, services and support. The thriving economy enables the community to live in dignity."

BALLYMAHON MUNICIPAL DISTRICT WELLBEING VISION STATEMENT

"Ballymahon Municipal District includes the Shannon and Inny Rivers, Royal Canal, Corelea Bog, areas of natural beauty. This district values community participation and volunteerism. It promotes physical and mental health, adequate services and supports for all including carers. It has a thriving, diverse economy with appropriate and affordable housing for all"



County Longford PPN Submission to Draft Longford County Development Plan 2021-2027

Submitted by Siobhán Cronogue, PPN Development Officer on behalf of Longford PPN Secretariat and full membership
18/01/20

COUNTY WELLBEING VISION STATEMENT

"County Longford has beautiful natural resources which are sustained, valued and protected. It is rich in history, values, culture and traditions and is inclusive of all people supporting community participation and volunteerism. It has adequate services, supports, facilities, infrastructure and a thriving diverse economy."

Please note we are submitting a more detailed breakdown of the Wellbeing Vision Statements with this submission.

If you would like to discuss any of the above with the PPN Secretariat, wider membership or myself please contact Siobhán Cronogue at ppn@longfordcoco.e or phone 087 261 5583

PPN Secretariat Members:

- Tess Murphy, Granard MD Rep
- Pozy Green, Longford MD Rep
- Michael Murray, Ballymahon MD Rep
- Jim O' Hara, C&V Rep
- Anna Delaney, C&V Rep
- Francesca Pawelczyk, Env Rep
- Noreen Mc Loughlin, Env Rep
- Eileen Finan, Social Inclusion Rep
- Bernie Moore, Social Inclusion Rep



County Longford Public Participation Network (PPN) Community Wellbeing Vision Statements



Contents

Foreword	3
What is Community Wellbeing?	4
What process did we use to develop our Community Wellbeing Visions.....	5
Overall County Vision for Community Wellbeing	6
Community Wellbeing Vision for Granard Municipal District.....	7
Health (physical & mental)	8
Economics & Resources	9
Social & Community Development	10
Participation, Democracy & Good Governance	11
Culture, Values & Meaning	12
Environment & Sustainability	13
Community Wellbeing Vision for Ballymahon Municipal District.....	14
Health (physical & mental)	15
Economics & Resources	16
Social & Community Development	17
Participation, Democracy & Good Governance	18
Culture, Values & Meaning	19
Environment & Sustainability	20
Community Wellbeing Vision for Longford Municipal District.....	21
Health (physical & mental)	22
Economics & Resources	23
Social & Community Development	24
Participation, Democracy & Good Governance	25
Culture, Values & Meaning	26
Environment & Sustainability	27

Foreword

Siobhán Cronogue, PPN Development Officer

Four out of 31 PPN's around the country was chosen to pilot this community project so groups could develop their Community Wellbeing Visions and County Longford PPN was delighted to be one of the chosen four. It was heart warming to see the level of commitment and engagement from our member groups and we were the first in the country to not only develop the toolkit but to complete the process and develop our own Visions at County and Municipal District level. Already the results have fed into various strategies, plans and policies and continue to do so today. Out of the Visions, we have developed a training programme so all our PPN Reps who sit on various Council and other decision making committees have the tools to ensure that the community priorities are being brought to the table. I am delighted that the PPN can facilitate the voice of our diverse range of member groups on issues that are important to them, their children, grandchildren and future generations. This is YOUR County so how it is shaped needs YOUR input and the PPN is the platform that can collectively create a shared community vision which is what this book is all about.

Tess Murphy, Granard Municipal District Rep on PPN Secretariat

As a PPN Community and Voluntary representative for the Granard Municipal District, I was privileged to be part of the process that developed an overall well-being statement for County Longford as well as a specific well-being statement for Granard MD. Put simply community well-being means that basic needs are met, that people have a sense of purpose, and that they feel able to achieve important goals, to participate in society and to live the



lives they value and have reason to value. The goals and objectives that are important to the people of the Granard Municipal district are outlined in this booklet. It is up to the local community, working with the PPN and Longford County Council to ensure that "there is appropriate housing for all people with access to community spaces, services and supports and that the thriving economy enables the community to live in dignity".

Brendan Quigley, Ballymahon Municipal District Rep on PPN Secretariat

This Vision for community wellbeing in our Municipal District was compiled from the ideas and aspirations of our community rep's. Under the headings of PARTICIPATION DEMOCRACY and GOOD GOVERNANCE it sets out a very clear roadmap for our Municipal District going forward. Our next step is to move this Vision forward and make it a reality.



Pozy Green, Longford Municipal District Rep on PPN Secretariat

It was an honour and privilege for all the groups that I represent in the Longford Municipal District to participate and have a voice that was listened to while developing the vision statement for their municipal district and county. We must strive to achieve the visions our community has outlined here "Longford Municipal District is open, accessible and inclusive regardless of age, gender, ethnicity, sexual orientation or ability. Its governance structures engage transparently and effectively with the community when developing policies and projects. The Longford Municipal District supports the quality of life and ongoing physical and mental health of the community".



What is Community Wellbeing?

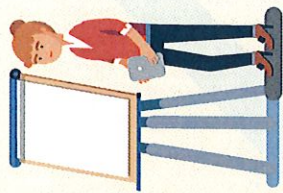
Although we often think about wellbeing in terms of good physical and mental health, it can also describe the wider conditions we need as individuals and communities to have a better quality of life, healthier environment and increased prosperity.

Considering all the aspects of community wellbeing together helps us to identify actions that can be undertaken by communities alongside local and national governments.

County Longford PPN as part of the pilot team who developed the PPN Community Wellbeing Vision Toolkit chose the following headings to consult with their members on: Health (physical & mental), Economics & Resources, Social & Community Development, Community Development, Participation, Democracy & Good Governance, Culture, Values & Meaning and Environment & Sustainability.



How did we create this Community Wellbeing Vision?



1

Workshop

PPN Members were invited to attend Community Wellbeing workshops. At these workshops the Community Wellbeing concept was presented



2

Asset Mapping

Working in groups attendees then highlighted the "assets" and aspects of their community that they wish to preserve and protect for current and future generations.



3

Wellbeing vision

Using the 6 Community Wellbeing headings, attendees shared what they (and the organisations they work for) considered to be important for their community's wellbeing.



4

Consultation

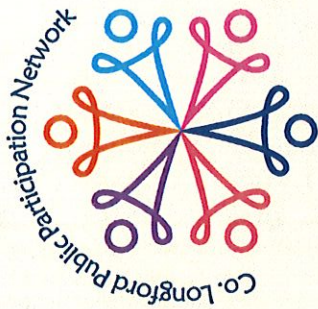
Following the workshop, an online consultation was shared with members who were unable to attend the workshops. They were provided the opportunity to answer the same questions asked at the workshop.



5

Draft Vision

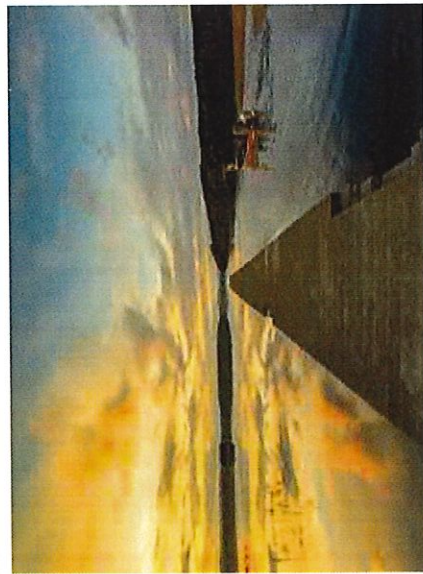
The PPN resource workers and secretariat members then analysed the responses from the workshop and online consultation. They then produced the draft wellbeing statements.



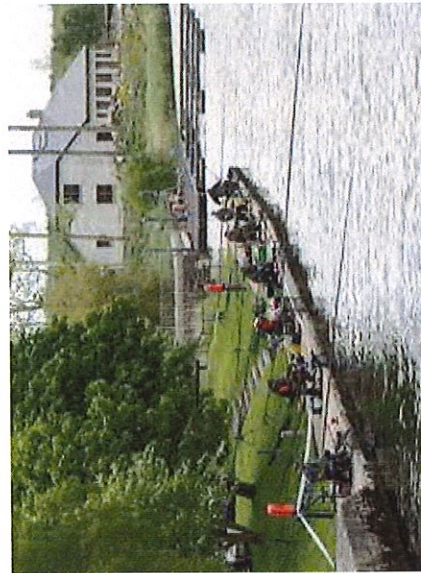
The following visions describe the County we want to develop

Vision for Community Wellbeing in County Longford

"County Longford has beautiful natural resources which are sustained, valued and protected. It is rich in history, values, culture and traditions and is inclusive of all people supporting community participation and volunteerism. It has adequate services, supports, facilities, infrastructure and a thriving diverse economy."



· Dring



· Lanesborough



· Killashee



Vision for Community Wellbeing in Granard Municipal District, Co. Longford

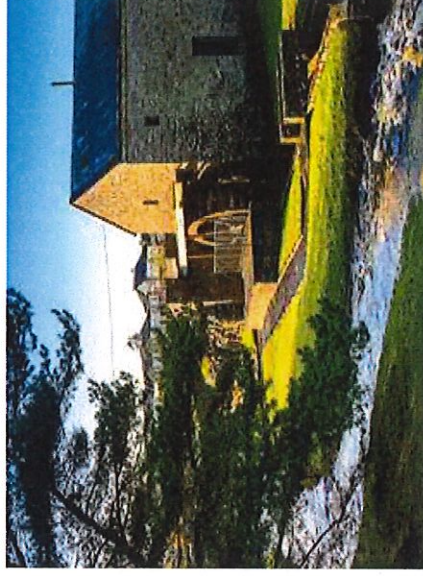
“Granard Municipal District has an outstanding natural environment with a strong inclusive community that values its history, culture and traditions while being open to others. The active partnership of the community and statutory structures ensures a high quality of life. There is appropriate housing for all people with access to community spaces, services and support. The thriving economy enables the community to live in dignity.”



Granard



Ballinamuck



Drumlith



Vision for Community Wellbeing in Granard Municipal District Participation, Democracy and Good Governance



The Public Participation Network (PPN) is the structure that effectively represents the views of local community groups through continuous development and communication.

- Councillors communicate effectively with the community through regular local open meetings and group consultations.
- There is an inclusive local democracy with support for the election of women, young people and people with disabilities.
- There is ongoing training and education on local and national government structures so that the electorate can make informed choices at election time.
- Local Authority plans are integrated and clearly responsive to local needs.



Vision for Community Wellbeing in Granard Municipal District

Values, Culture and Meaning

The community values the quality of life of its citizens through supporting its culture, traditions and ways of working, while being open to new cultures and intergenerational learning.

- There is mutual understanding and respect for diverse cultural traditions.
- This is a welcoming and inclusive community that supports and resources intercultural engagement and respects cultural difference.
- This area is seen as a model of great community spirit, friendship and [self] autonomy





Vision for Community Wellbeing in Granard Municipal District Health



Granard Municipal District promotes the ongoing mental and physical health of its community through the provision of appropriate housing, accessible local services, and facilities for all age groups.

- There is affordable appropriate housing with additional supports that meet the needs of all members of the community including those with disabilities, older citizens, and vulnerable people, with community centres and open spaces in all developments.
- A broad range of accessible sporting and outdoor activity facilities are available for all (e.g. safe walking trails, allotments, youth facilities).
- Rural isolation is addressed through the provision of appropriate spaces and services that promote social interaction, information sharing and appropriate training.
- Active promotion of positive mental health combats addiction and enhances wellbeing.
- There are systems in place that ensure protection and support for vulnerable members of the community.



Vision for Community Wellbeing in Granard Municipal District

Social and Community Development



Our vibrant community is inclusive of all people who are active participants in shaping their own future. That community action is recognised, valued and practically supported with good infrastructure and services in place.

- Strong community spirit is nurtured, and all people are empowered to participate and work together to contribute to their community.
- Dedicated, fit-for-purpose, multifunctional spaces and facilities are available for all groups in the community.
- All sectors of the community are actively supported irrespective of age, gender, social status, ability, ethnicity, etc.
- Volunteerism, networking and collaboration is recognised, celebrated and supported.



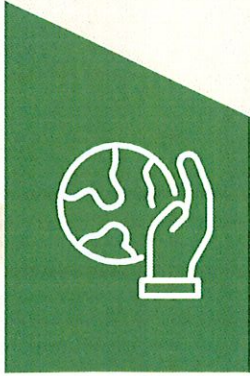
Vision for Community Wellbeing in Granard Municipal District

Work, Economy and Resources

Granard Municipal District has a thriving, diverse, economy that supports existing businesses/ enterprises of different scales and the development of new initiatives.

- Traditional local employment is sustained and economically viable.
- There are opportunities for new enterprises (commercial, community, etc.).
- Visitors are attracted to the area and the hospitality and tourism sector is developed to a high standard to accommodate them.
- High quality dedicated spaces are provided for community activities and support, and also for business development
- Sustainable jobs and employment that provide good livelihoods are available along with opportunities for education, training and further skills development.





Vision for Community Wellbeing in Granard Municipal District

Environment and Sustainability



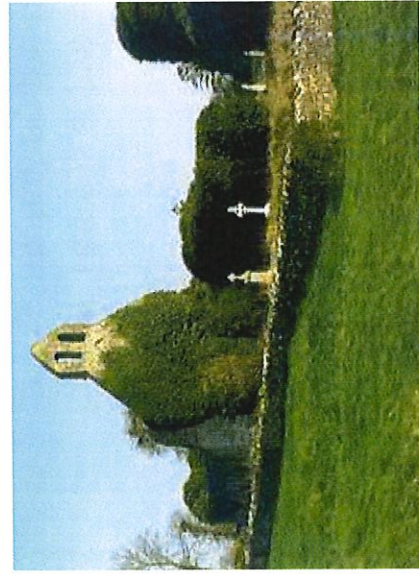
This is an area of high quality natural environment which is easily accessible to all the community. Resource use is sustainable and the environment is valued and protected.

- There is active education and the community are informed and involved in protecting the natural environment.
- There are creative initiatives for renewable energy, waste management and resource use. (in households, farms, businesses, etc.)
- Our towns and villages are well maintained with buildings re-used to fulfil community needs.
- Our community is physically and digitally well-connected and integrated.
- Pollution of water bodies is prevented.

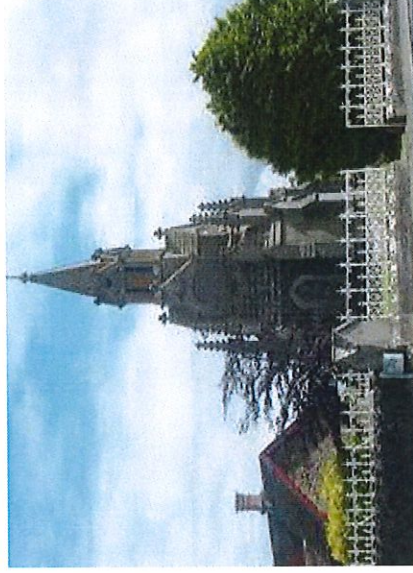


Vision for Community Wellbeing in Ballymahon Municipal District, Co. Longford

"Ballymahon Municipal District includes the Shannon and Inny Rivers, Royal Canal, Corelea Bog, areas of natural beauty. This district values community participation and volunteerism. It promotes physical and mental health, adequate services and supports for all including carers. It has a thriving, diverse economy with appropriate and affordable housing for all".



Abbeyshrule



Ardagh



Edgeworthstown



Vision for Community Wellbeing in Ballymahon Municipal District

Participation, Democracy and Good Governance



Governance structures relating to the Ballymahon Municipal District are open, accessible and inclusive and engage transparently and effectively with the community when developing policies and projects that have a local impact.

- The Public Participation Network (PPN) is the structure that effectively represents the views of local community groups through continuous development, representation, information sharing and communication.
- Elected Councillors communicate effectively with the communities in all towns and villages in this Municipal District.
- Gender balance within our political arena is achieved and citizens outside of political families have equal opportunities.
- Local Authority consults with and listens to communities in terms of plans and strategies. Local Authority staff contact details are easily accessible to the community.
- The importance of local services is acknowledged and maintained in all areas (e.g. Post office, CE Scheme)
- Every amenity is accessible to everyone (disability/new communities)



Vision for Community Wellbeing in Ballymahon Municipal District Values, Culture and Meaning



The community values the quality of life of its citizens through supporting its culture, traditions and ways of working, while being open to new cultures and intergenerational learning.

- Services are in place to support integration.
- The community is inclusive of all with a mutual understanding and respect for diverse traditions.
- Knowledge, experiences and traditions are passed down through generations (old to young)
- The community is thriving with community spirit and neighbourliness.
- Our natural environment and heritage buildings are preserved and open to all.



Vision for Community Wellbeing in Ballymahon Municipal District

Health



Ballymahon Municipal District promotes the ongoing mental and physical health of its community through the provision of appropriate social and affordable housing, accessible local services, and facilities for all age groups supported by adequately resourced voluntary activity.

- There is affordable appropriate housing with additional supports for people with disabilities, older citizens, and vulnerable people, with community centres and public green spaces and outdoor P.E equipment
- Older people are supported to remain in their own homes through recognising and rewarding the role of carers and provision of accessible respite care.
- There are no waiting lists for chronic health conditions (e.g. hip and cataracts). There is local accessible general and mental health provision.
- All services and public spaces have disability access and adequate public transport from rural areas.
- Young people participate in youth groups, voluntary activity and use of outdoor sporting facilities.



Vision for Community Wellbeing in Ballymahon Municipal District Social and Community Development



Our vibrant community is inclusive of all people supported with good infrastructure and services. Volunteers are acknowledged and valued. Community spaces are adequately resourced and funded.

- Dedicated, fit-for-purpose, staffed, multifunctional spaces and facilities are available and accessible to all members of the community (e.g. FRC, Daycare).
- All citizens in this area have access to mental health services and supports.
- This area is safe and secure for all residents to live, work and play.
- Youth services and facilities are affordable and accessible to all.
- Volunteerism is developed and strong within the community.
- Infrastructure is to a high standard and accessible to all members of the community.
- Education and training supports are in place combating social exclusion and intergenerational unemployment.

Vision for Community Wellbeing in Ballymahon Municipal District

Work, Economy and Resources

Ballymahon Municipal District has a thriving, diverse, economy that supports existing businesses/ enterprises of different scales and the development of new initiatives.

- There is a high level sustainable employment opportunities for all.
- There is opportunities and support for community enterprise, business and digital hubs.
- There is accessible, affordable childcare to enable parents to access employment.
- There is excellent broadband throughout the district.
- There are comprehensive training programmes from pre-employment to outreach degree programmes.
- There is support for volunteering as a stepping stone to training and employment





Vision for Community Wellbeing in Ballymahon Municipal District

Environment and Sustainability

Ballymahon Municipal District is an area of high quality natural environment which is easily accessible to all the community including the Shannon and Inny rivers, Royal canal, Corlea bog etc. Resources are sustainable and the environment is valued and protected.

- There is active education and the community are informed and involved in protecting the natural environment.
- There are creative initiatives for renewable energy, water harvesting and conservation.
- There is an effective waste management plan promoted actively throughout the community with a process to address illegal dumping.
- Old heritage buildings in the Ballymahon Municipal District are preserved and restored for community and tourism activities.
- Each town in the Ballymahon Municipal District has adequate green space, community gardens, cycle tracks, playground and wildlife areas (to include native floral)
- There is Environment education in all schools.

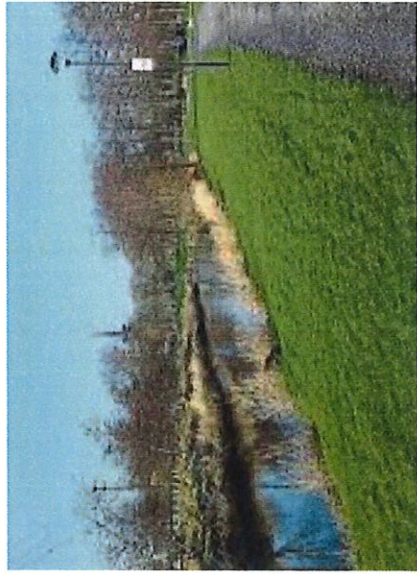




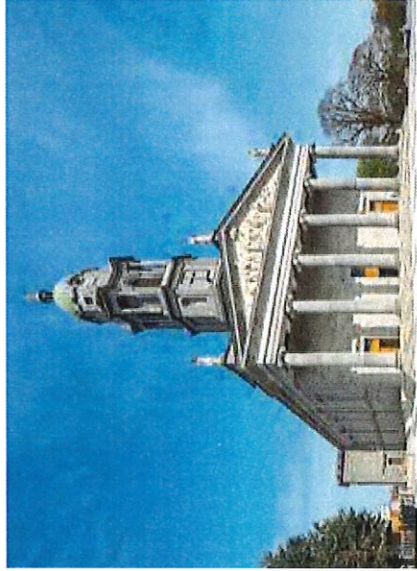
Vision for Community Wellbeing in Longford Municipal District, Co. Longford

"Longford Municipal District is open, accessible and inclusive regardless of age, gender, ethnicity, sexual orientation or ability. Its governance structures engage transparently and effectively with the community when developing policies and projects."

The Longford MD supports the quality of life and ongoing physical and mental health of the community through the provision of appropriate housing, services, supports, facilities and education for everyone. Community action is recognised and valued. Renewable energy is developed to sustain the community. There are clean waterways and rivers and the Longford section of the Royal Canal is re-opened and accessible to all. Longford MD is a centre of employment and tourism opportunities for the whole county."



Longford town



Longford town



Clondra



Vision for Community Wellbeing in Longford Municipal District

Participation, Democracy and Good Governance



Governance structures relating to the Longford Municipal District are open, accessible, inclusive and engage transparently and effectively with the community when developing policies and projects that have a local impact.

- A well resourced Public Participation Network (PPN) is the structure through which community groups can engage effectively with Local Authority.
- Public representatives engage proactively with local community groups.
- All State Agencies are welcoming and open and treat people with respect and empathy.
- Grant applications are announced in a timely fashion with criteria in a clear, understandable language.
- All council meetings are live streamed.
- There are training programmes to encourage people to become community activists.
- All housing estates have a support worker as in Cluid/Respond, who engages with residents in resolving issues.
- There is accessible, affordable childcare to support women's participation.
- Everyone has an equal say in their community.



Vision for Community Wellbeing in Longford Municipal District

Values, Culture and Meaning



The community values the quality of life of its citizens through supporting its culture, traditions and ways of working, while being open to new cultures and intergenerational learning.

- Community groups are open and welcoming to all regardless of age, gender or ethnicity
- Longford Municipal District has no illegal drug problem.
- Longford Intercultural strategy is being implemented and monitored.
- Educational programmes on environmental sustainability are provided on an ongoing basis.
- Access to Arts programmes is widely available.
- Intergenerational training provided through Men's Shed.
- Regular exhibitions of the work of community groups is showcased in the Backstage theatre.
- Animal rights are understood and respected.
- Traditional skills and crafts are retained and promoted.
- Irish language, music, dance, sports and place names are promoted.
- Irish culture is retained as well as including cultures of new communities.



Vision for Community Wellbeing in Longford Municipal District Health



Longford Municipal District promotes the ongoing mental and physical health of its community through the provision of appropriate services, supports, facilities and education.

- There are systems and supports in place that ensure protection and support for everyone in the community (elderly, people with disabilities, domestic violence victims and people in addiction.)
- Carers are valued and supported and community and home care packages are available to all.
- A broad range of accessible (competitive and non competitive) sports programmes and facilities are available.
- Infrastructure, transport, supports and services are in place for the physical and mental wellbeing of our elderly.
- Creativity programmes made central to all support systems and services.
- Accessible infrastructure, housing, community spaces, and public buildings for people with disabilities.
- A dedicated community space for community groups.
- Education on all topics easily accessible and affordable to all (sex/relationship education in schools, mental health, ageing, youth disability etc)
- Excellent healthcare available to all with no waiting lists.



Vision for Community Wellbeing in Longford Municipal District

Social and Community Development



Our vibrant community is inclusive of all people who are active participants in shaping their own future. Community action is recognised and valued and practically supported by good infrastructure and services.

- Local communities have their voices heard in local decisions.
- There are regular meetings between community groups and local agencies e.g. HSE, ETB, LA.
- Adequately resourced community spaces for all ages (cultures, arts, allotments etc)
- Accessible local transport is available.
- All social housing has outdoor space.
- Outdoor healthy activities e.g. Park run are encouraged and promoted.
- Inter-agency communication and collaboration is a key feature of Longford Municipal District.

Vision for Community Wellbeing in Longford Municipal District

Work, Economy and Resources

Longford Municipal District has a thriving economy that supports existing and new businesses/ enterprises of different scales with good infrastructure and sufficient community and education spaces.

- Longford Municipal District is a hive of tourist attractions and activities. (e.g. Canal to Market Square).
- Sustainable Development Goals are a priority and everyone has participated in their successful implementation.
- Infrastructure and Transport facilities are accessible to all.
- Businesses/enterprises are sustainable with the introduction of reduced rates and supports.
- A high standard of medical benefits are available to all members of the community.
- LA and community groups consult and collaborate successfully on local plans and projects in relation to growing the economy.





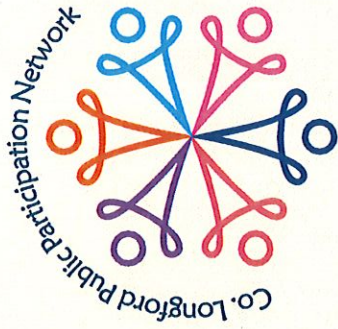
Vision for Community Wellbeing in Longford Municipal District

Environment and Sustainability

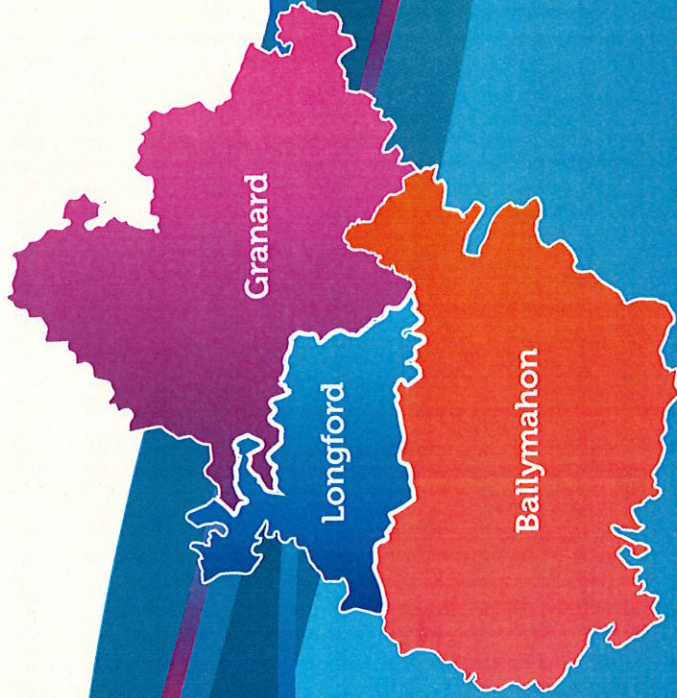


Longford Municipal District is an area of high quality natural environment which is protected, developed and easily accessible to all. The community is self sufficient in agriculture and horticulture. Resource use is sustained and Renewable energy developed.

- Towns and villages are well maintained with buildings re-used to fulfil community needs.
- There are clean waterways, rivers and the canal is developed and accessible to the community.
- Greenways, brownfield and heritage sites, woodlands, walkways and trails are developed and well maintained.
- Air pollution is reduced and flora and fauna are protected.
- Infrastructure and transport is solar powered reducing energy use.



County Longford Public Participation Network (PPN)



Putting Community at the heart of Local Government

Phone: 087 261 5583 / 043 333333

Email: ppn@longfordcoco.ie



@longfordppn



@LongfordPPN