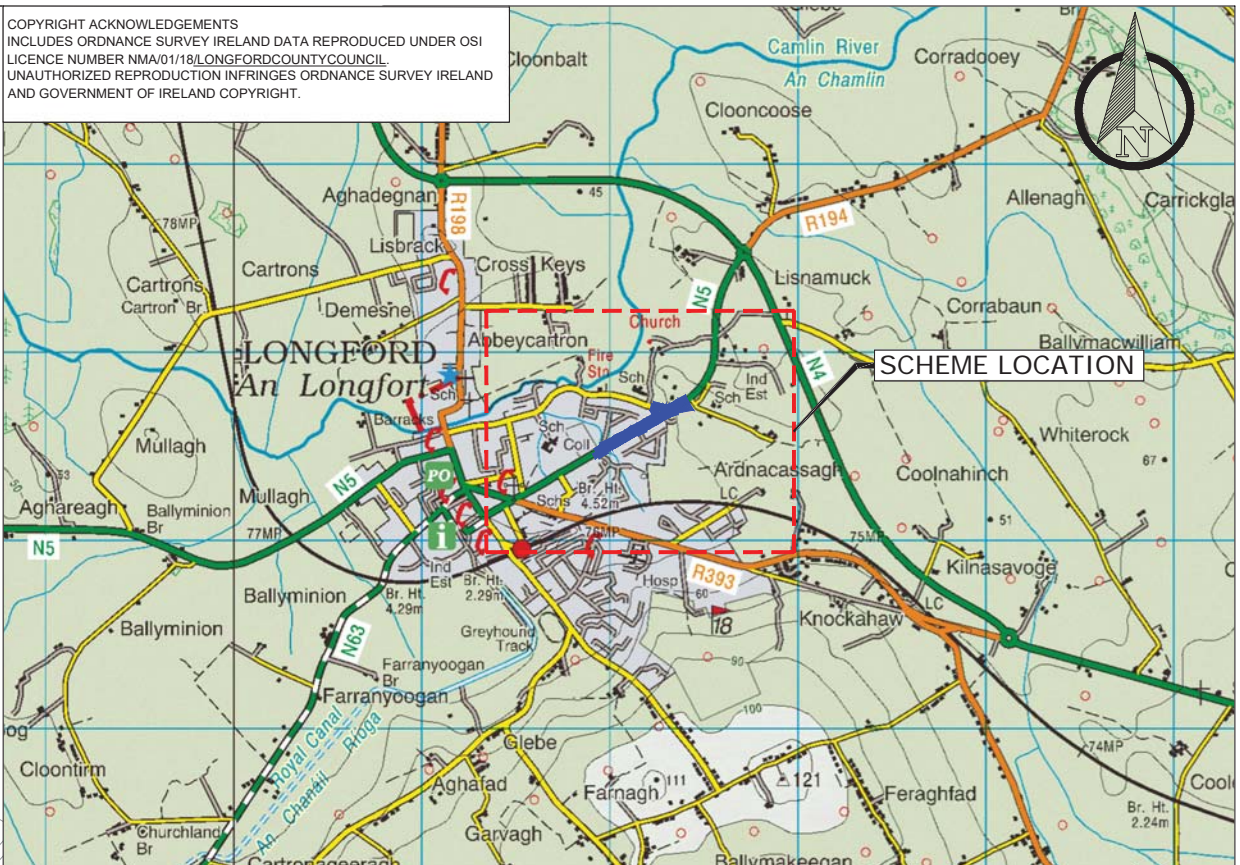




COPYRIGHT ACKNOWLEDGEMENTS  
 INCLUDES ORDNANCE SURVEY IRELAND DATA REPRODUCED UNDER OSI  
 LICENCE NUMBER NMA/01/18/LONGFORDCOUNTYCOUNCIL.  
 UNAUTHORIZED REPRODUCTION INFRINGES ORDNANCE SURVEY IRELAND  
 AND GOVERNMENT OF IRELAND COPYRIGHT.



**LEGEND:**  
 — SITE BOUNDARY  
 ⊕ LOCATION OF ALL SITE NOTICES

COPYRIGHT ACKNOWLEDGEMENTS  
 INCLUDES ORDNANCE SURVEY IRELAND DATA REPRODUCED UNDER OSI  
 LICENCE NUMBER 2017/18/CCMA/LONGFORDCOUNTYCOUNCIL.  
 UNAUTHORIZED REPRODUCTION INFRINGES ORDNANCE SURVEY IRELAND  
 AND GOVERNMENT OF IRELAND COPYRIGHT.

**GENERAL NOTES:**

1. This drawing is the property of Barry Transportation. It is a confidential document and must not be copied, used or its contents divulged without prior written consent.
2. All levels are referred to ordnance survey datum, Malin head.
3. DO NO SCALE, use figured dimensions only, if in doubt, ask.
4. Grid is to local co-ordinates relative to design.

REV	SUIT	DATE	DESCRIPTION	BY	APP
P02	S3	01/02/18	FOR ISSUE	EV	GT
P01	S3	18/05/18	FOR ISSUE	EV	GT

JOB  
**N63 MAJOR'S WELL ROAD**

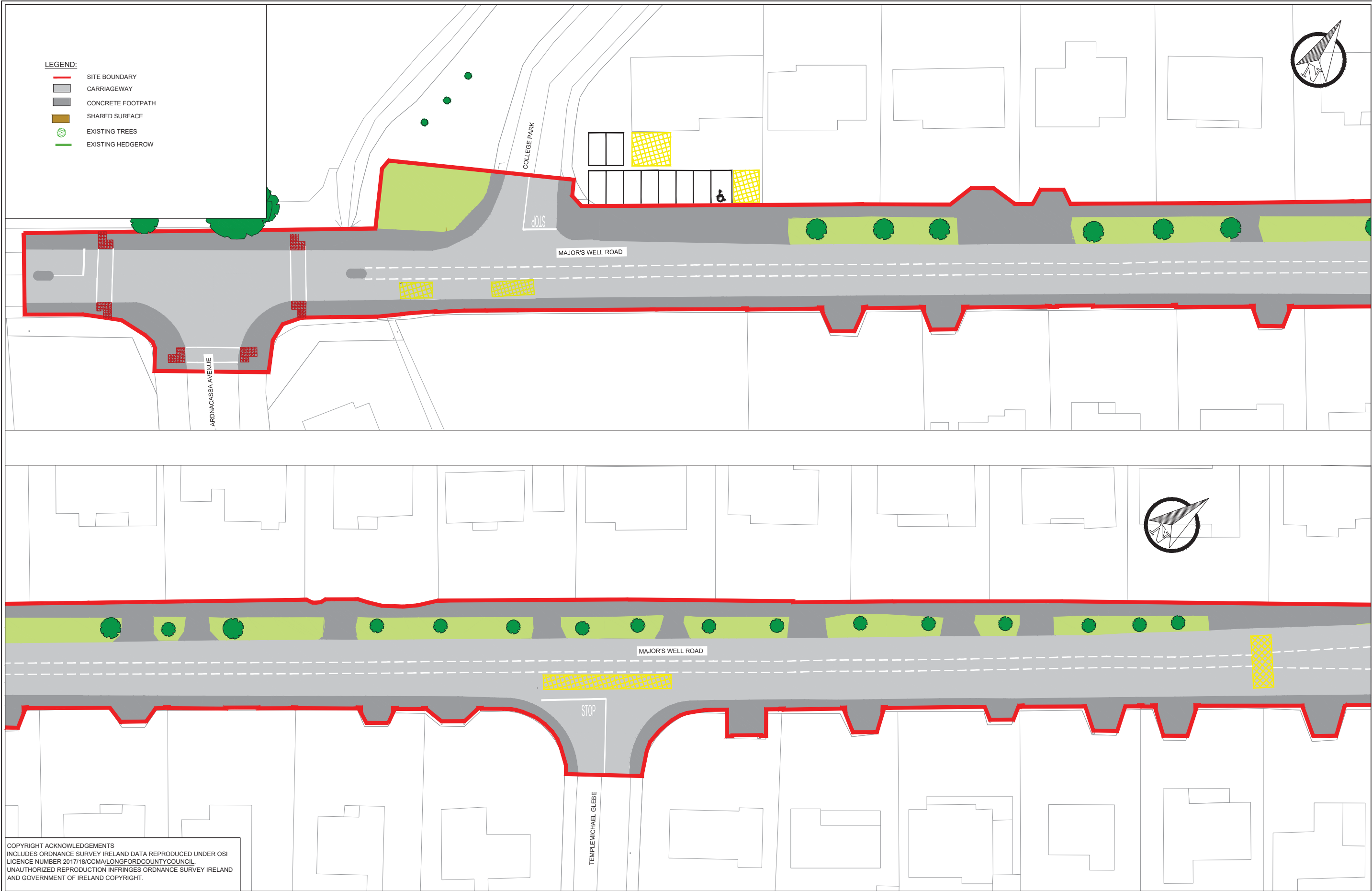
TITLE  
**MAJOR'S WELL JUNCTION  
 SITE LOCATION MAP**

DESIGN:	DRAWN:	CHK:	APP:
EV	EV	GT	GT
1:1000 @A1, 1:2000 @A3			
DATE: 18/12/18			
PROJ: 460242			
DWG: 460242-HB-HGN-Z_MJZZZ-DR-CH-0015			
SHEET: 1 of 1	REVISION: P02	SUITABILITY: S3	



460242-HB-HGN-Z\_MJZZZ-DR-CH-0012.dwg

- LEGEND:**
- SITE BOUNDARY
  - CARRIAGEWAY
  - CONCRETE FOOTPATH
  - SHARED SURFACE
  - EXISTING TREES
  - EXISTING HEDGEROW



**COPYRIGHT ACKNOWLEDGEMENTS**  
 INCLUDES ORDNANCE SURVEY IRELAND DATA REPRODUCED UNDER OSI LICENCE NUMBER 2017/18/CCM/LONGFORDCOUNTYCOUNCIL. UNAUTHORIZED REPRODUCTION INFRINGES ORDNANCE SURVEY IRELAND AND GOVERNMENT OF IRELAND COPYRIGHT.

- GENERAL NOTES:**
1. This drawing is the property of Barry Transportation. It is a confidential document and must not be copied, used or its contents divulged without prior written consent.
  2. All levels are referred to ordnance survey datum, Malin head.
  3. DO NO SCALE, use figured dimensions only, if in doubt, ask.
  4. Grid is to local co-ordinates relative to design.

REV	SUIT	DATE	DESCRIPTION	BY	APP
P01	S3	05/02/2019	FOR APPROVAL	NN	RC

JOB  
**N63 MAJOR'S WELL ROAD**

TITLE  
**PART 8 MAJOR'S WELL ROAD GENERAL ARRANGEMENT (EXISTING LAYOUT)**

DESIGN:	DRAWN:	CHK:	APP:
AV	JM	JG	CD
1:250 @A1, 1:500 @A3			
DATE: 18/05/18			
PRQJ: 460242			
DWG: 460242-HB-HGN-Z_MJZZZ-DR-CH-0017			
SHEET: 1 of 2	REVISION: P05	SUITABILITY: S3	



460242-HB-HGN-Z\_MJZZZ-DR-CH-0011.dwg



- LEGEND:**
- SITE BOUNDARY
  - CARRIAGEWAY
  - CONCRETE FOOTPATH
  - SHARED SURFACE
  - EXISTING TREES
  - EXISTING HEDGEROW

**COPYRIGHT ACKNOWLEDGEMENTS**  
 INCLUDES ORDNANCE SURVEY IRELAND DATA REPRODUCED UNDER OSI LICENCE NUMBER 2017/18/CCMA/LONGFORDCOUNTYCOUNCIL. UNAUTHORIZED REPRODUCTION INFRINGES ORDNANCE SURVEY IRELAND AND GOVERNMENT OF IRELAND COPYRIGHT.

**GENERAL NOTES:**

1. This drawing is the property of Barry Transportation. It is a confidential document and must not be copied, used or its contents divulged without prior written consent.
2. All levels are referred to ordnance survey datum, Malin head.
3. DO NOT SCALE, use figured dimensions only, if in doubt, ask.
4. Grid is to local co-ordinates relative to design.

REV	SUIT	DATE	DESCRIPTION	BY	APP
P01	S3	05/02/2019	FOR APPROVAL	NN	RC

JOB  
**N63 MAJOR'S WELL ROAD**

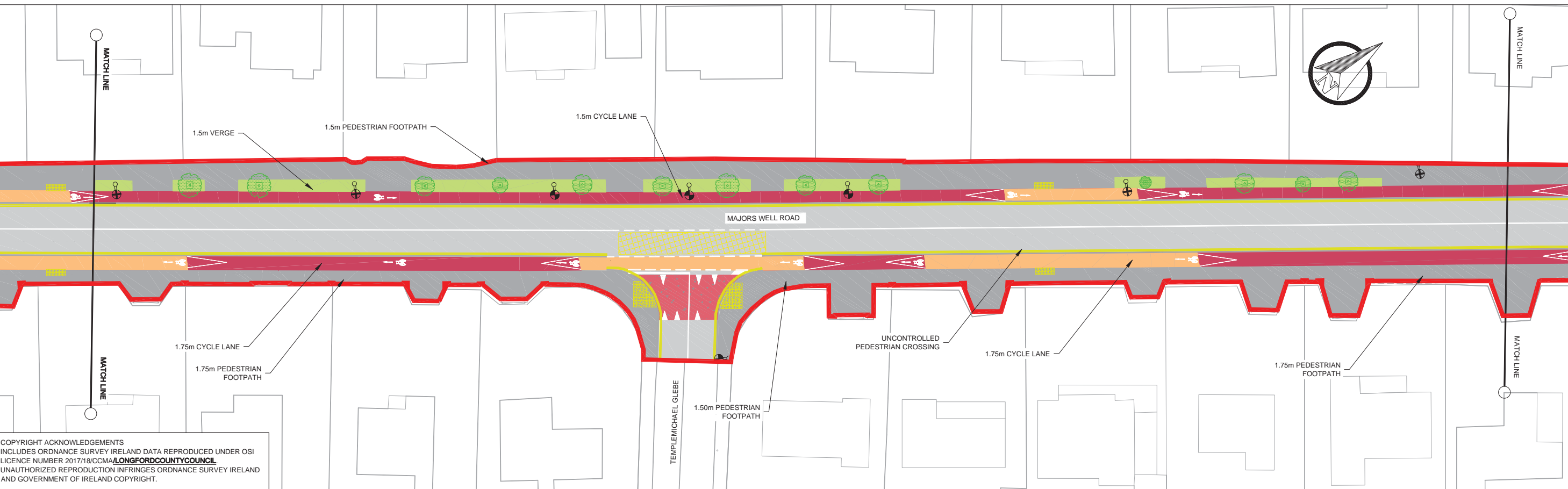
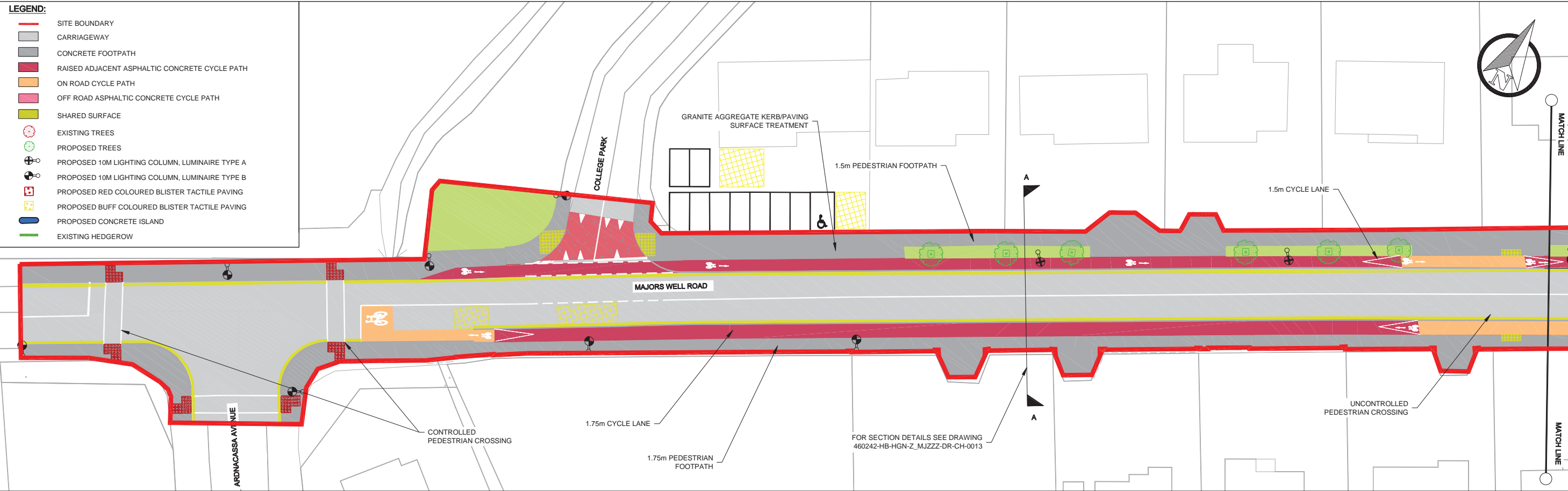
TITLE  
**PART 8 MAJOR'S WELL ROAD GENERAL ARRANGEMENT (EXISTING LAYOUT)**

DESIGN:	DRAWN:	CHK:	APP:
	NN	RC	
1:250 @A1, 1:500 @A3			
DATE: 05/02/2019			
PRQJ: 460242			
DWG: 460242-HB-HGN-Z_MJZZZ-DR-CH-0018			
SHEET: 2 of 2	REVISION: P01	SUITABILITY: S3	



460242-HB-HGN-Z\_MJZZZ-DR-CH-0018.dwg

- LEGEND:**
- SITE BOUNDARY
  - ▭ CARRIAGEWAY
  - ▭ CONCRETE FOOTPATH
  - ▭ RAISED ADJACENT ASPHALTIC CONCRETE CYCLE PATH
  - ▭ ON ROAD CYCLE PATH
  - ▭ OFF ROAD ASPHALTIC CONCRETE CYCLE PATH
  - ▭ SHARED SURFACE
  - EXISTING TREES
  - PROPOSED TREES
  - ⊕ PROPOSED 10M LIGHTING COLUMN, LUMINAIRE TYPE A
  - ⊕ PROPOSED 10M LIGHTING COLUMN, LUMINAIRE TYPE B
  - ▭ PROPOSED RED COLOURED BLISTER TACTILE PAVING
  - ▭ PROPOSED BUFF COLOURED BLISTER TACTILE PAVING
  - ▭ PROPOSED CONCRETE ISLAND
  - EXISTING HEDGEROW



COPYRIGHT ACKNOWLEDGEMENTS  
 INCLUDES ORDNANCE SURVEY IRELAND DATA REPRODUCED UNDER OSI LICENCE NUMBER 2017/18/CCMA/LONGFORDCOUNTYCOUNCIL  
 UNAUTHORIZED REPRODUCTION INFRINGES ORDNANCE SURVEY IRELAND AND GOVERNMENT OF IRELAND COPYRIGHT.

**GENERAL NOTES:**

1. This drawing is the property of Barry Transportation. It is a confidential document and must not be copied, used or its contents divulged without prior written consent.
2. All levels are referred to ordnance survey datum, Malin head.
3. DO NOT SCALE, use figured dimensions only, if in doubt, ask.
4. Grid is to local co-ordinates relative to design.

REV	SUIT	DATE	DESCRIPTION	BY	APP
P05	S3	01/02/19	GENERAL REVISION	EV	GT
P04	S3	17/12/18	GENERAL REVISION	EV	GT
P03	S3	05/07/18	FOR REVISION	HS	GT
P02	S3	07/05/18	FOR REVISION	JM	GT
P01	S3	18/05/18	FOR APPROVAL	JM	GT

JOB	
<b>N63 MAJOR'S WELL ROAD</b>	

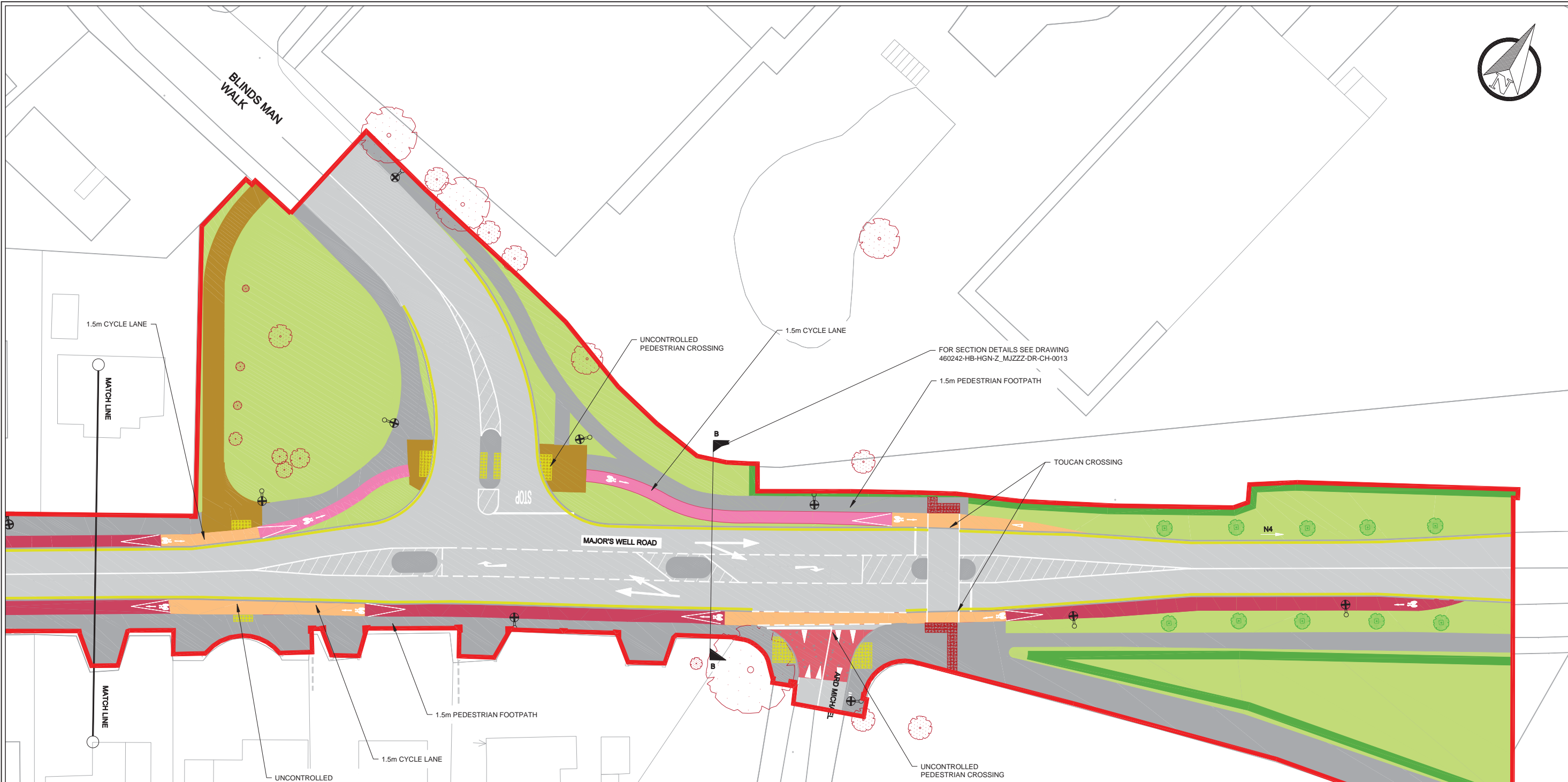
TITLE

**PART 8  
 MAJOR'S WELL ROAD  
 GENERAL ARRANGEMENT  
 (PROPOSED LAYOUT)**

DESIGN:	DRAWN:	CHK:	APP:
AV	JM	JG	CD
1:250 @A1, 1:500 @A3			
DATE: 18/05/18			
PROJ: 460242			
DWG: 460242-HB-HGN-Z_MJZZZ-DR-CH-0011			
SHEET: 1 of 2	REVISION: P05	SUITABILITY: S3	



460242-HB-HGN-Z\_MJZZZ-DR-CH-0011.dwg



**LEGEND:**

- SITE BOUNDARY
- CARRIAGEWAY
- CONCRETE FOOTPATH
- RAISED ADJACENT ASPHALTIC CONCRETE CYCLE PATH
- ON ROAD CYCLE PATH
- OFF ROAD ASPHALTIC CONCRETE CYCLE PATH
- SHARED SURFACE
- EXISTING TREES
- PROPOSED TREES
- PROPOSED 10M LIGHTING COLUMN, LUMINAIRE TYPE A
- PROPOSED 10M LIGHTING COLUMN, LUMINAIRE TYPE B
- PROPOSED RED COLOURED BLISTER TACTILE PAVING
- PROPOSED BUFF COLOURED BLISTER TACTILE PAVING
- PROPOSED CONCRETE ISLAND

**COPYRIGHT ACKNOWLEDGEMENTS**  
 INCLUDES ORDNANCE SURVEY IRELAND DATA REPRODUCED UNDER OSI LICENCE NUMBER 2017/18/CCMA/LONGFORDCOUNTYCOUNCIL  
 UNAUTHORIZED REPRODUCTION INFRINGES ORDNANCE SURVEY IRELAND AND GOVERNMENT OF IRELAND COPYRIGHT.

**GENERAL NOTES:**

1. This drawing is the property of Barry Transportation. It is a confidential document and must not be copied, used or its contents divulged without prior written consent.
2. All levels are referred to ordnance survey datum, Malin head.
3. DO NOT SCALE, use figured dimensions only, if in doubt, ask.
4. Grid is to local co-ordinates relative to design.

REV	SUIT	DATE	DESCRIPTION	BY	APP
P05	S3	01/02/19	GENERAL REVISION	EV	GT
P04	S3	17/12/18	GENERAL REVISION	EV	GT
P03	S3	05/07/18	PUBLIC LIGHTING REVISION	HS	GT
P02	S3	07/06/18	FOR REVISION	JM	GT
P01	S3	18/05/18	FOR APPROVAL	JM	GT

JOB

**N63 MAJOR'S WELL ROAD**

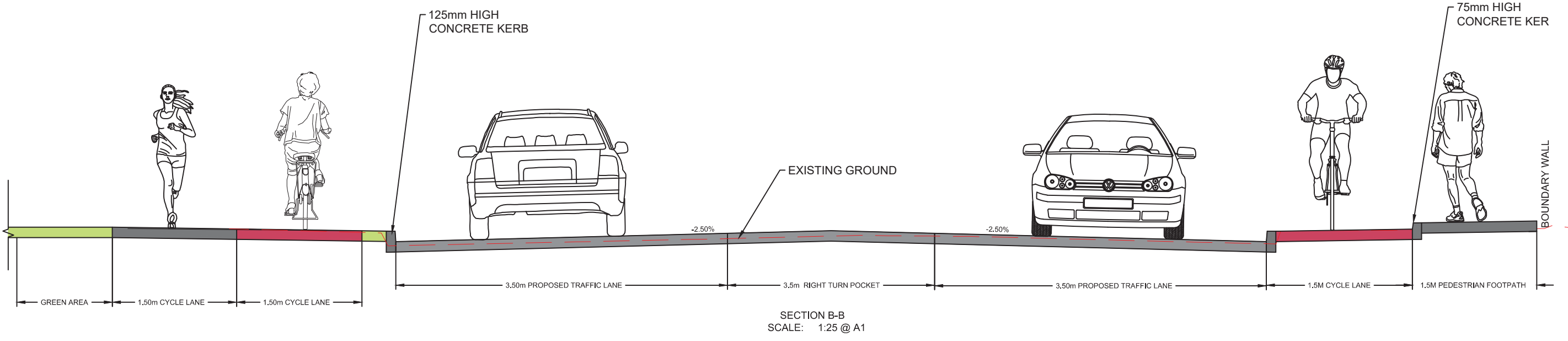
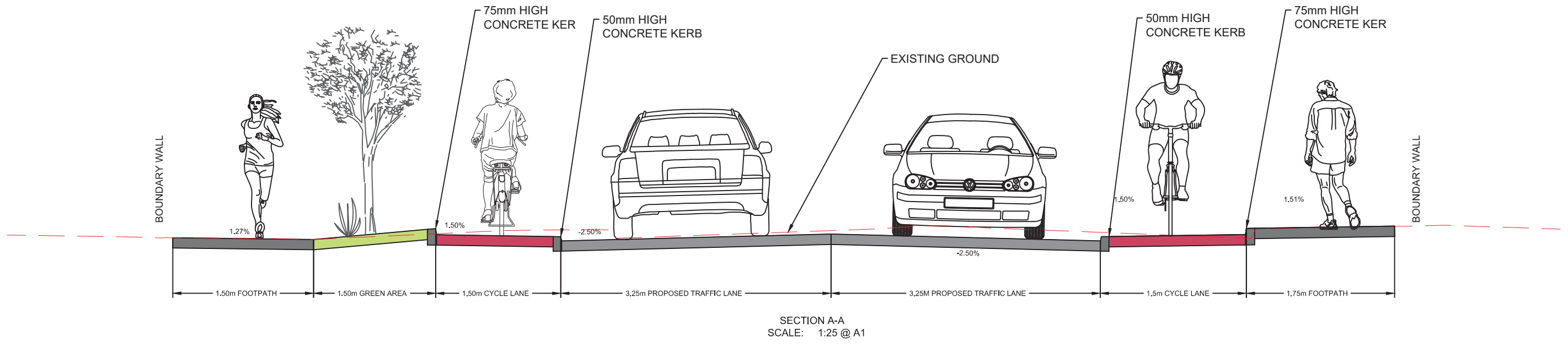
TITLE

**PART 8  
MAJOR'S WELL JUNCTION  
GENERAL ARRANGEMENT  
(PROPOSED LAYOUT)**

DESIGN:	DRAWN:	CHK:	APP:
AV	JM	JG	CD
1:250 @A1, 1:500 @A3			
DATE: 18/05/18			
PROJ: 460242			
DWG: 460242-HB-HGN-Z_MJZZZ-DR-CH-0012			
SHEET: 2 of 2	REVISION: P05	SUITABILITY: S3	



460242-HB-HGN-Z\_MJZZZ-DR-CH-0012.dwg



COPYRIGHT ACKNOWLEDGEMENTS  
INCLUDES ORDNANCE SURVEY IRELAND DATA REPRODUCED UNDER OSI  
LICENCE NUMBER 2017/18/CCMA/LONGFORDCOUNTYCOUNCIL.  
UNAUTHORIZED REPRODUCTION INFRINGES ORDNANCE SURVEY IRELAND  
AND GOVERNMENT OF IRELAND COPYRIGHT.

**TII**  
Bonneagar Iompair Éireann  
Transport Infrastructure Ireland

**BARRY**  
TRANSPORTATION

Classon House  
Dundrum Business Park,  
Dundrum Road,  
Dublin 14, Ireland

Phone: +353 1 485 1400  
Email: info@bbarry.ie

**GENERAL NOTES:**

- This drawing is the property of Barry Transportation. It is a confidential document and must not be copied, used or its contents divulged without prior written consent.
- All levels are referred to ordnance survey datum, Malin head.
- DO NOT SCALE, use figured dimensions only, if in doubt, ask.
- Grid is to local co-ordinates relative to design.

REV	SUIT	DATE	DESCRIPTION	BY	APP
P01	S3	18/05/18	FOR APPROVAL	JM	GT

JOB  
**N63 MAJOR'S WELL ROAD**

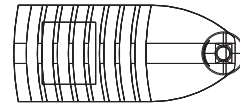
TITLE  
**PART 8  
TYPICAL CROSS SECTIONS**

DESIGN:	DRAWN:	CHK:	APP:
AV	JM	JG	CD
1:50 @A1, 1:100 @A3			
DATE: 18/05/18			
PROJ: 460242			
DWG: 460242-HB-HGN-Z_MJZZZ-DR-CH-0013			
SHEET: 1 of 1	REVISION: P01	SUITABILITY: S3	

460242-HB-HGN-Z\_MJZZZ-DR-CH-0013.dwg



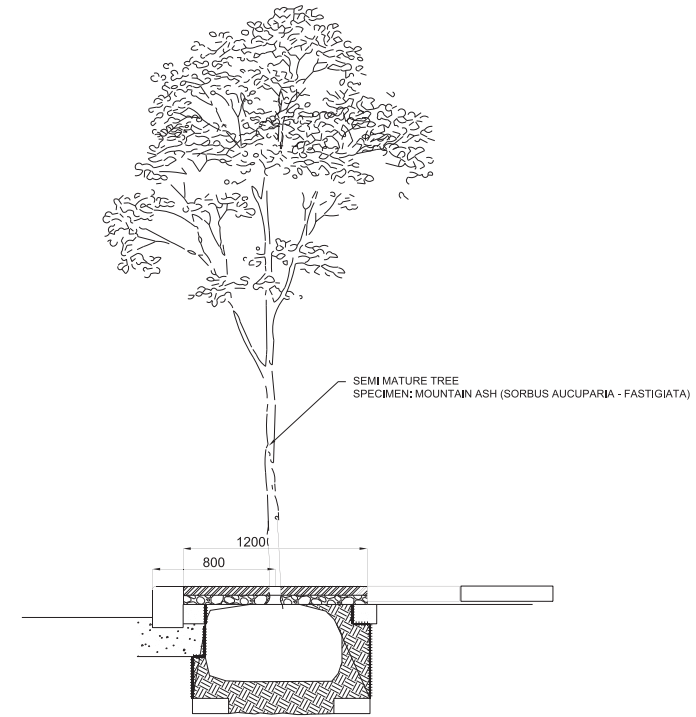
BEVEL KERB AT DRIVEWAY  
SCALE: NOT TO SCALE



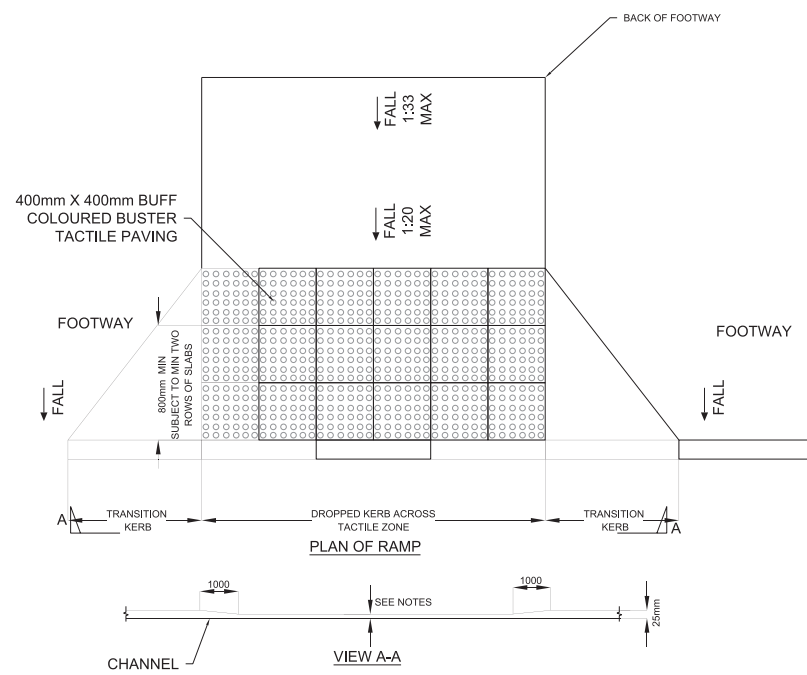
LIGHTING COLUMN  
PLAN  
SCALE: NOT TO SCALE



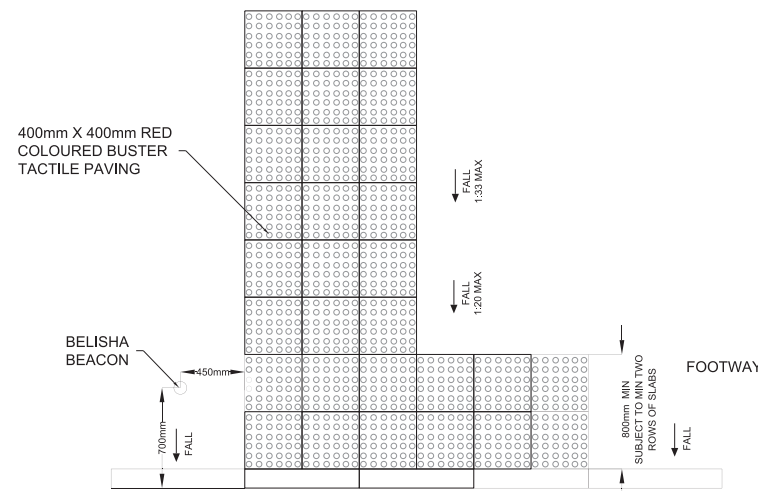
LIGHTING COLUMN  
ELEVATION  
SCALE: NOT TO SCALE



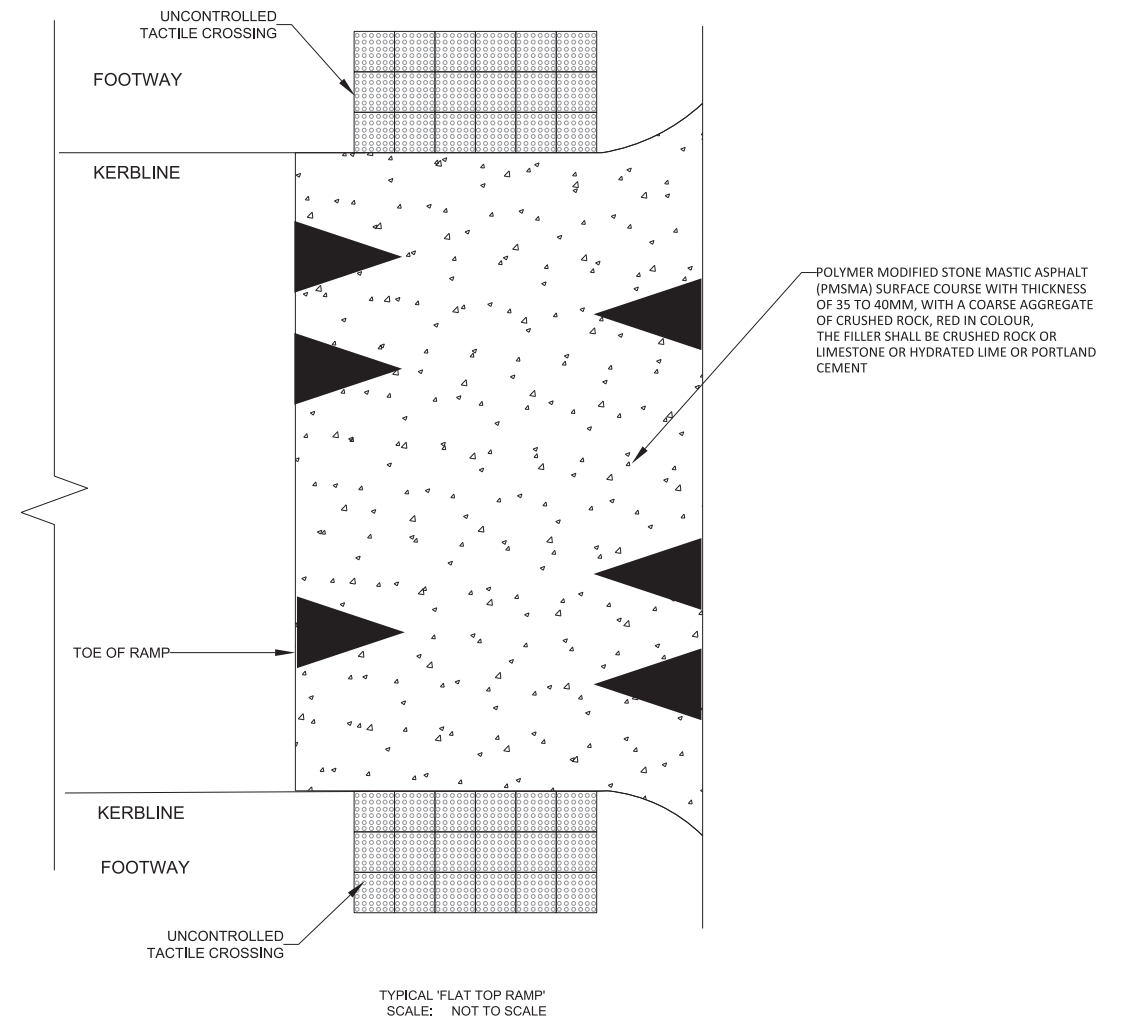
TREE PIT DETAIL  
SCALE: NOT TO SCALE



TYPICAL DROP KERB DETAIL  
SCALE: NOT TO SCALE



CONTROLLED CROSSING



GENERAL NOTES:

- This drawing is the property of Barry Transportation. It is a confidential document and must not be copied, used or its contents divulged without prior written consent.
- All levels are referred to Ordnance Survey datum. Main head.
- DO NOT SCALE, use figured dimensions only. If in doubt, ask.
- Grid is to local co-ordinates relative to design.

REV	SUIT	DATE	DESCRIPTION	BY	APP
P02	S3		FOR REVISION	JM	GT
P01	S3	18/05/18	FOR APPROVAL	JM	GT

JOB

**N63 MAJOR'S WELL ROAD**

TITLE

**PART 8  
TYPICAL DETAILS**

DESIGN:	DRAWN:	CHK:	APP:
AV	JM	JG	CD
NTS			
DATE:			
PROJ: 460242			
DWG: 460242-HB-HGN-Z_MJZZZ-DR-CH-0014			
SHEET: 1 of 1	REVISION: P03	SUITABILITY: S3	

460242-HB-HGN-Z\_MJZZZ-DR-CH-0014.dwg