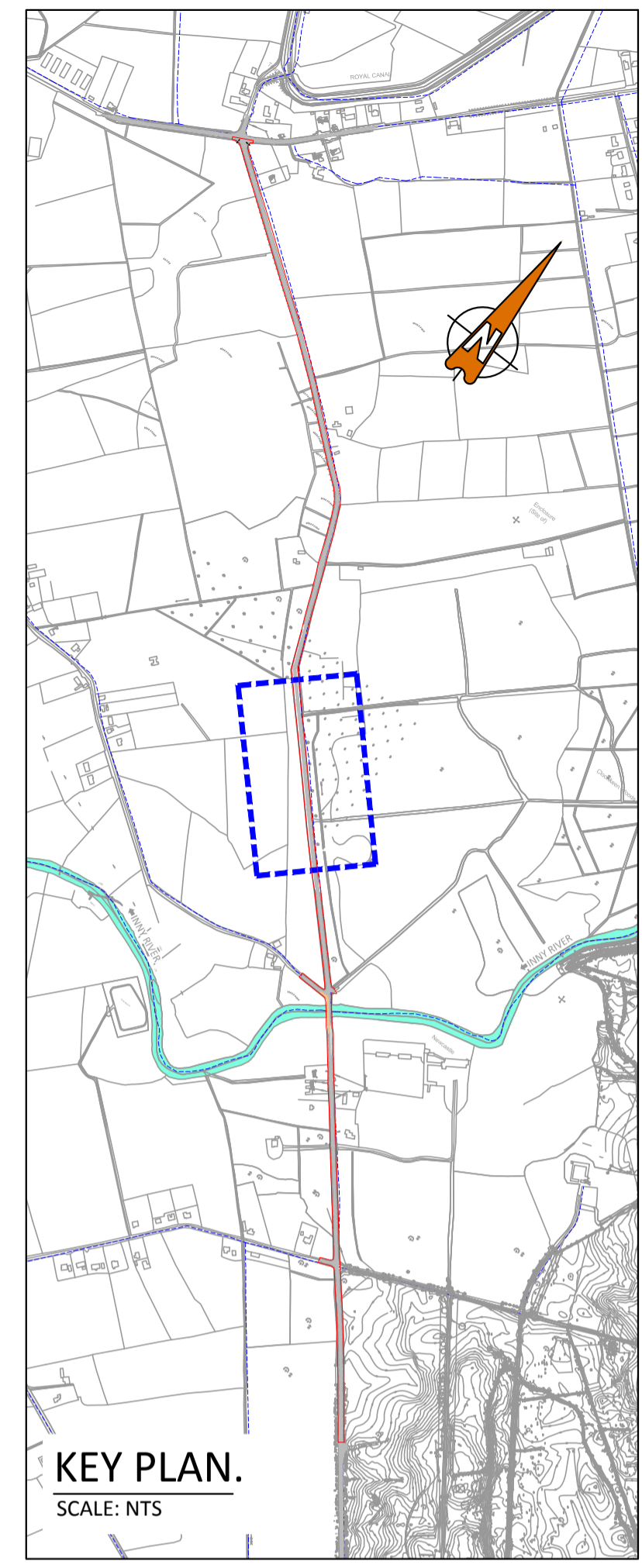


LEGEND:

- BRIDGE PARAPET / WALL
- RRM 025 AS PER TSM 7.3.54
- EXISTING TRAFFIC SIGN
- PROPOSED TRAFFIC SIGN
- CARRIAGEWAY
- TOWNLAND
- RED LINE BOUNDARY
- INNY RIVER

NOTE:

OS MAP REFERENCE NUMBERS: 2695 & 2764



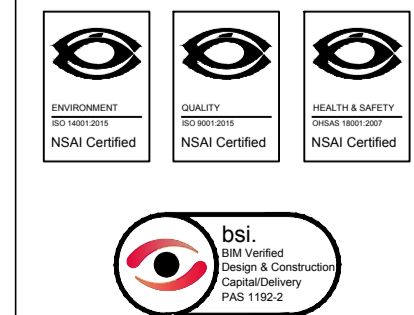
PLAN.
SCALE 1:500

ORDNANCE SURVEY OF IRELAND LICENCE NO. EN0000819 © GOVERNMENT OF IRELAND

- FOR SETTING OUT REFER TO ARCHITECT'S DRAWINGS.
- THIS DRAWING TO BE READ IN CONJUNCTION WITH ALL OTHER ARCHITECTURAL AND ENGINEERING DRAWINGS AND ALL OTHER RELEVANT DRAWINGS AND SPECIFICATIONS.
- DO NOT SCALE THIS DRAWING. USE FIGURED DIMENSIONS ONLY.
- NO PART OF THIS DOCUMENT MAY BE REPRODUCED OR TRANSMITTED IN ANY FORM OR STORED IN ANY RETRIEVAL SYSTEM OF ANY NATURE WITHOUT THE WRITTEN PERMISSION OF O'CONNOR SUTTON CRONIN AS COPYRIGHT HOLDER EXCEPT AS AGREED FOR USE ON THE PROJECT FOR WHICH THE DOCUMENT WAS ORIGINALLY ISSUED.

Rev No.	Date	Revision Note	Drn by	Chkd by
P01	13.03.19	ISSUED FOR INFORMATION	HS	LG
P02	29.03.19	ISSUED FOR INFORMATION	AF	LG
P03	02.04.19	ISSUED FOR INFORMATION	JS	LG
C01	03.04.19	ISSUED FOR PLANNING	JS	LG

Rev No.	Date	Revision Note	Drn by	Chkd by



Head Office,
9 Prussia Street,
Dublin 7.
D07 KT57

TEL +353 (0)1 8682000

e: contactus@ocsc.ie
w: www.ocsc.ie

Dublin | London | Belfast | Galway | Cork



Client: LONGFORD COUNTY COUNCIL
Project: TRAFFIC CALMING TOOME CROSS ROADS TO CENTER PARCS ENTRANCE
Title: ROADWAY OPTION A SHEET 5 OF 9

Code	Originator	Zone	Level	Type	Role	Number	Status	Revision
L307	OCSC	XX	XX	DR	C	0104	A1	C01

Date: 13.03.19 Scale: 1:500 @ A1 Drn by:HS Chkd by:LG Aprvd by:AH

PLANNING DRAWING.
NOT FOR CONSTRUCTION.
ALL LEVELS GIVEN ARE
RELATIVE TO ORDNANCE DATUM.
THIS DRAWING HAS BEEN ISSUED FOR INFORMATION
PURPOSES ONLY AND MUST NOT BE USED
FOR CONSTRUCTION UNDER ANY CIRCUMSTANCES