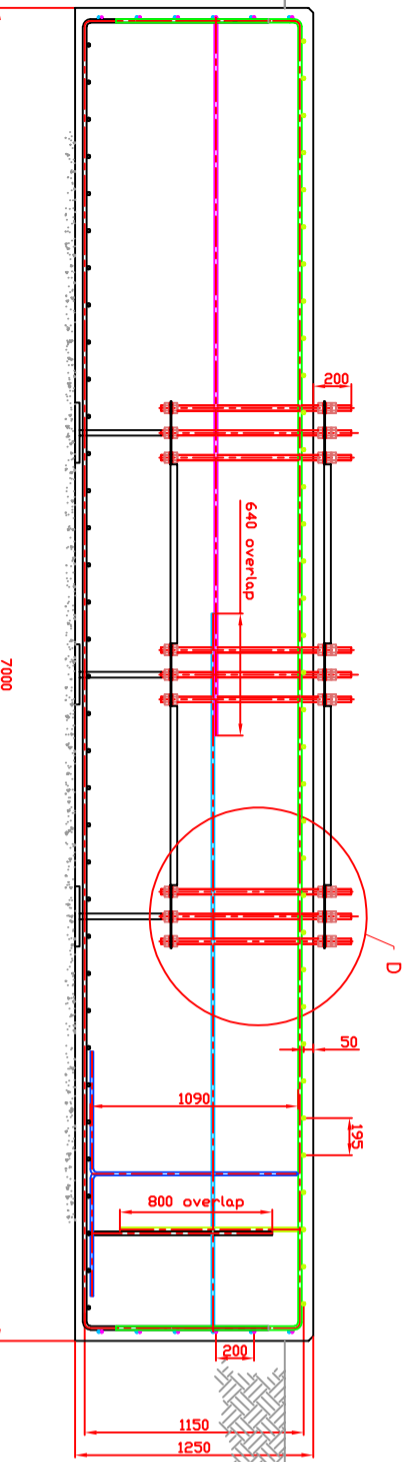
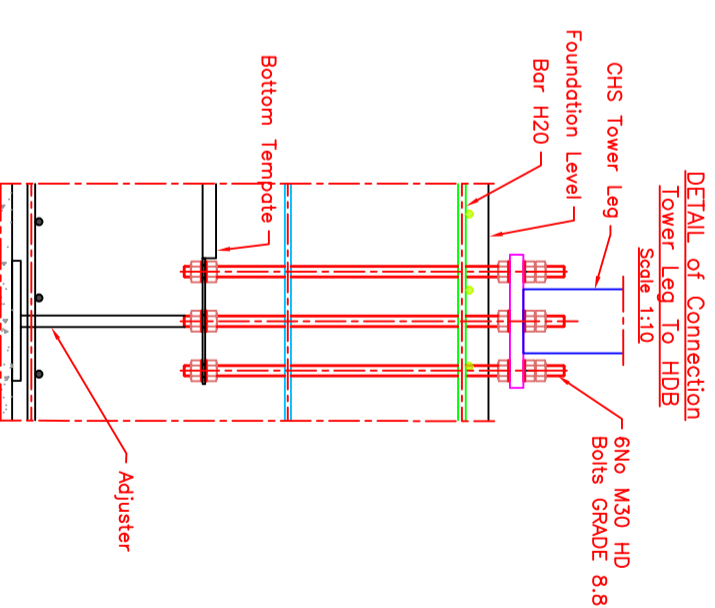
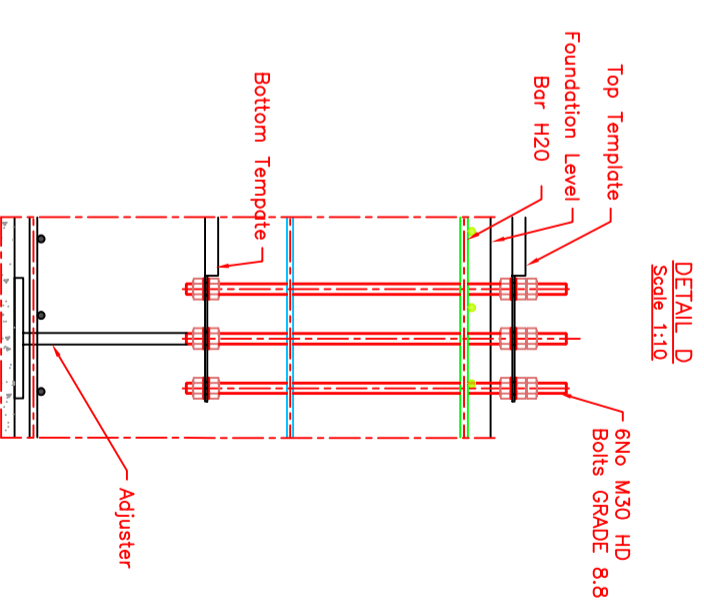


SCALE 1:20



SCALE 1:20



NOTES

GENERAL

- 1 : ALL DIMENSIONS IN MM UNLESS NOTED OTHERWISE.
- 2 : FOUNDATION DESIGN BASED ON ALLOWABLE NET SOIL BEARING PRESSURE 100kN/m².
- 3 : FOUNDATION DESIGN IS SUITABLE FOR GROUNDWATER LEVEL BELOW FOUNDATION LEVEL.
- 4 : REINFORCEMENT TO ISEN10080.
- 5 : MINIMUM COVER TO BE 75mm ALL SIDES.
- 6 : CONCRETE TO BE C30/37 TO ISEN 19922-1-1.
- 7 : MAXIMUM FREE WATER/CEMENT RATIO 0.55.
- 8 : MINIMUM CEMENT CONTENT OF 325kg/m³.
- 9 : TOP SURFACE TO BE LAID TO FALLS AS SHOWN, MINIMUM SLOPE 1:60.
- 10: FOR REINFORCEMENT DETAILS REFER TO REBAR SCHEDULE (PROVIDED SEPARATELY).

CONSTRUCTION PROCEDURE

- 1 : SET OUT AND EXCAVATE TO REQUIRED DEPTH
- 2 : REMOVE ALL SOFT MATERIAL FROM BASE PRIOR TO PLACING BLINDING CONCRETE.
- 3 : FIX SHUTTERS FOR BASE AS REQUIRED.
- 4 : INSTALL REINFORCEMENT (BOTTOM LAYER).
- 5 : PLACE CHAIRS (BAR MARK 06) FOR TOP REINFORCEMENT.
- 6 : INSTALL TEMPLATES AND HOLDING DOWN BOLTS, ACCURATELY LOCATE, LEVEL AND SECURE IN POSITION.
- 7 : INSTALL REINFORCEMENT (TOP LAYER).
- 8 : POUR CONCRETE ENSURING TEMPLATE ASSEMBLY DOES NOT MOVE.
- 9 : WOOD TROWELLED OR FLOATED FINISH TO SURFACE.
- 10: COVER WITH INSULATION QUILT'S AND LEAVE TO CURE. DO NOT EXPOSE TO SUN OR WIND FOR AT LEAST 7 DAYS.
- 11: ALL WORK IS TO BE CARRIED OUT IN ACCORDANCE WITH THE RELEVANT DELMEC SPECIFICATION FOR REINFORCED CONCRETE FOUNDATIONS.
- 12: REMOVE ALL SPOIL.



UNIT TOP BARRICADE BARRICADE SHEDDY ROAD
CENTRAL, DELMEC, REEL AND
MECHANICAL DEPARTMENT, FOUNDATION SPECIALISTS
Tel: +44 (0) 191 2000 Fax: +44 (0) 191 2000 E: info@delmec.co.uk

Delmec Engineering Ltd

Project Title

Del 6

Del 6 7.00x7.00x1.25 FOUNDATION

Rev.	Description	By	Date
0	Issued For Construction	A.Z	02/11/07
1	Revised to show changes	A.Z	02/11/07

Drawn	Date	Rev. No.	Scale	Proj. No.	Client
A.Z	02/11/07	A1	1:20		Delmec Engineering Ltd

Project No.	Drawing No.	Revision No.	Scale
7373	7.00x7.00x1.25 FOUNDATION	A1	1:20