

**DATE:** 23 September 2020  
**DESIGNER:** D.Larkin  
**PROJECT No:** Rev 0-LCC 2020  
**PROJECT NAME:** R198 Footpath Ext, Drumlish

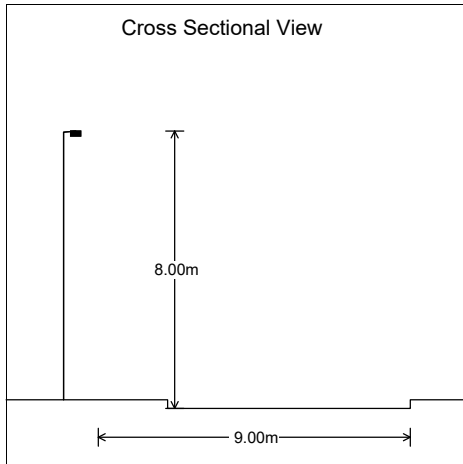


## **Roadway Lighting Report**

**PREPARED BY:** Electric Skyline Ltd  
CRF House,  
Dalton St,  
Claremorris,  
Co. Mayo,  
F12 N2Y2  
e-mail: [info@electricskyline.ie](mailto:info@electricskyline.ie)  
website: [www.electricskyline.ie](http://www.electricskyline.ie)  
website: [www.lightingreality.com](http://www.lightingreality.com)

## Roadway Report Summary

### Layout



### Road Data

Calculation Grid	2015:EN13201 Illuminance
Width (m)	9.00
No. of Lanes	2
Road Surface	R2
Q0	0.07
Left Footpath(m)	2.00
Right Footpath(m)	0.00

### Main Lighting

#### Column Data

Configuration	Single Sided Left
Spacing (m)	50.00
Height (m)	8.00
Tilt (deg)	5.00
Setback (m)	3.00
Outreach (m)	0.35
Overhang (m)	-2.65

#### Luminaire Data

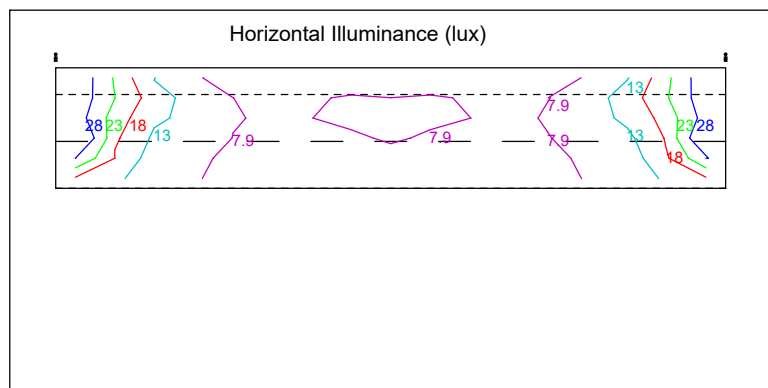
Supplier	
Type	AXIA 3.2 5266 Integrated lenses - 32 OSL ON SQUARE GIANT@800m
Lamp(s)	32 OSLON SQUARE GIANT@800mA NW 740 230V 00-36-985
Lamp Flux (klm)	10.31
File Name	AXIA 3.2 5266 32 OSLON SQUARE GIANT T 800mA NW740 429372 Integrated lense...
Maintenance Factor	0.83
Lum. Int. Class	G1

### Results

#### Main

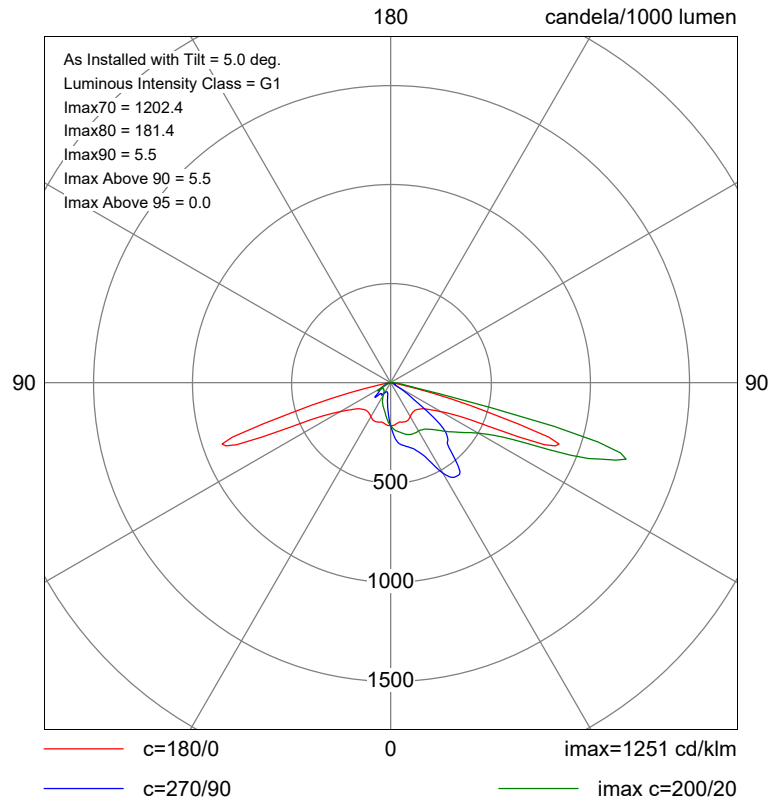
Complies with P2

Eav	12.07
Emin	5.41
Emax	35.61
Emin/Emax	0.15
Emin/Eav	0.45

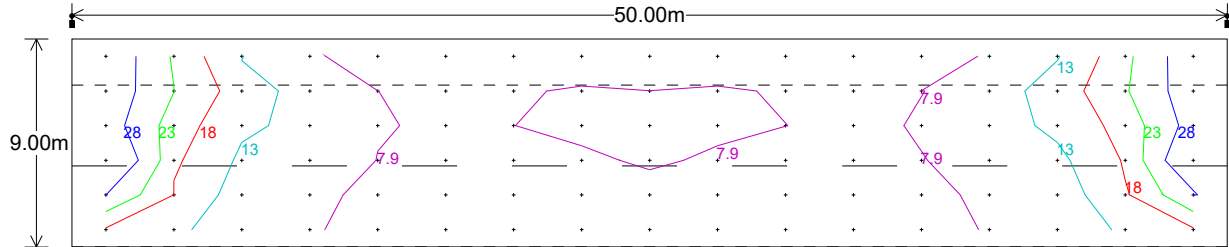


## Polar Diagram

### Main Luminaire AXIA 3.2 5266 Integrated lenses - 32 OSLON SQUARE GIANT@800m



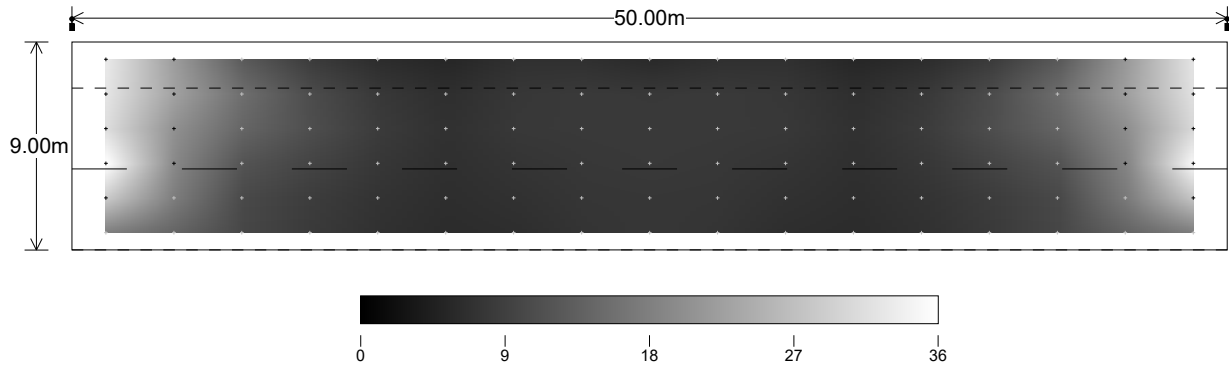
## Horizontal Illuminance (lux)



### Main Results

Eav	12.07
Emin	5.41
E <sub>max</sub>	35.61
E <sub>min</sub> /E <sub>max</sub>	0.15
E <sub>min</sub> /E <sub>av</sub>	0.45

## Horizontal Illuminance (lux)



## Horizontal Illuminance (lux)

