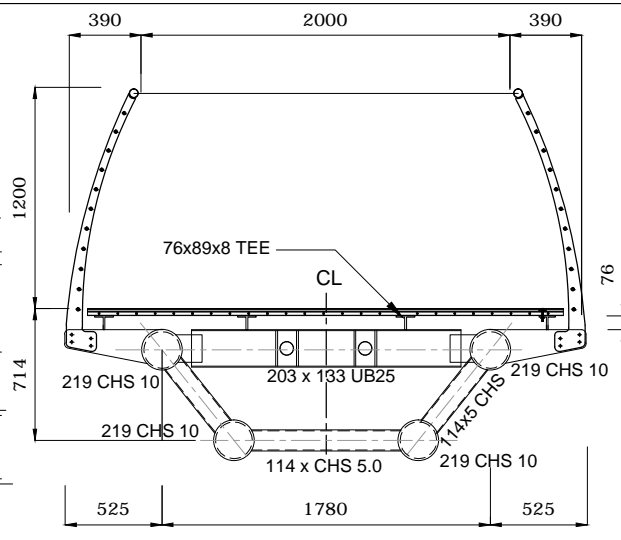


**STRUCTURAL FRAMING PLAN**

SCALE 1:50 (A1) 1:100 (A3)

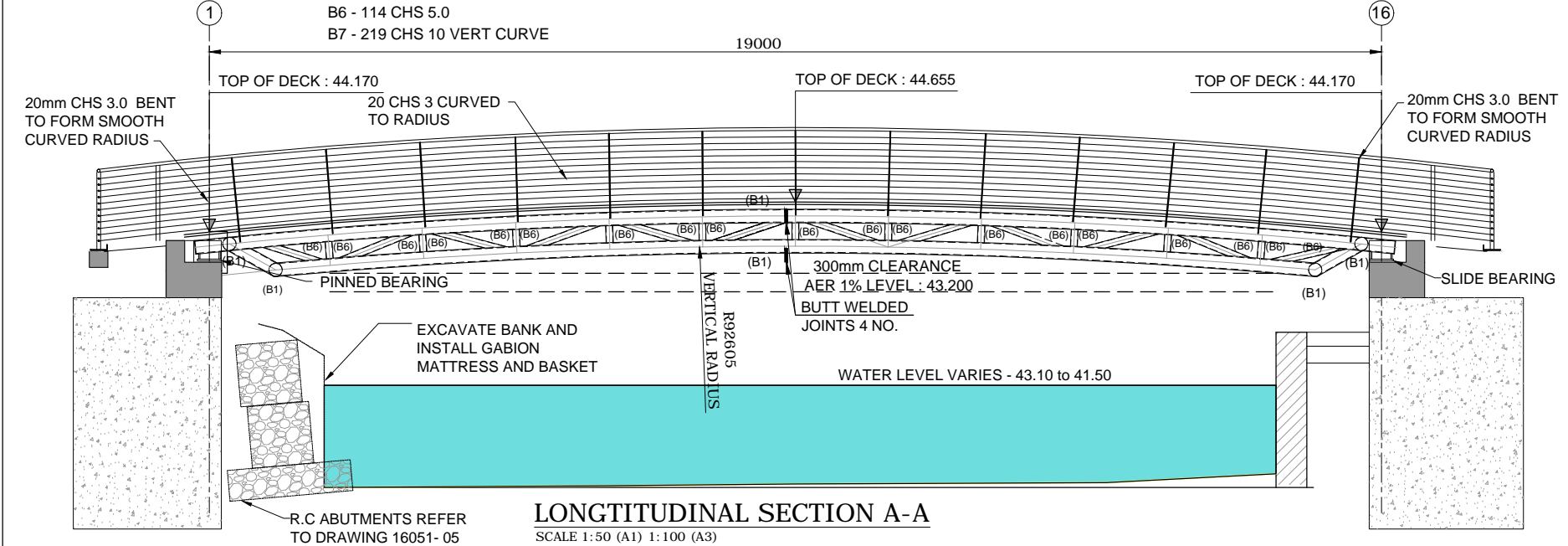
- LEGEND**
- B1- 219 CHS 10 VERT & HORZ CURVE
  - B2- 203 x 133 x 25 UB
  - B3 - 76 x 89 x 8 TEE VERT CURVE
  - B4 - 76 x 89 x 8 TEE HORZ & VERT CURVED
  - B5 - 2no 12mm PLATE TO PROFILE
  - B6 - 114 CHS 5.0
  - B7 - 219 CHS 10 VERT CURVE



**SECTION B-B**

SCALE 1:20 (A1) 1:40 (A3)

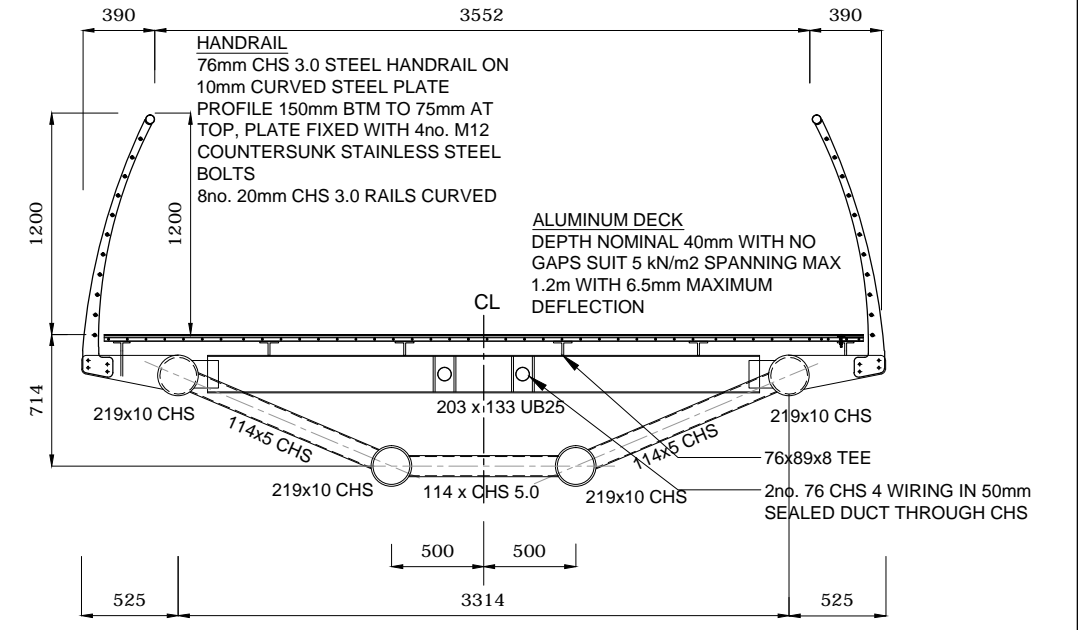
- NOTES:**
1. THIS DRAWING IS THE COPYRIGHT OF KILLIAN ENGINEERS AND MUST NOT BE RETAINED, COPIED OR USED WITHOUT THE ABOVE CONSULTANT'S AUTHORITY.
  2. USED FIGURED DIMENSIONS, DO NOT SCALE FROM THE DRAWINGS.
  3. ALL DIMENSIONS ARE IN MILLIMETERS AND LEVELS IN METERS UNLESS NOTED OTHERWISE.
  4. ALL DIMENSIONS SHALL BE VERIFIED BY THE CONTRACTOR AND ANY DISCREPANCIES NOTIFIED TO THE ENGINEER.
  5. ALL LEVELS SHOWN ARE TO ORDANCE DATUM MALIN.
  6. ANY DISCREPANCIES BETWEEN DRAWINGS, SPECIFICATIONS, SKETCHES, VERBAL INSTRUCTIONS & SITE CONDITIONS TO BE REFERRED TO THE EMPLOYERS REPRESENTATIVE BEFORE WORK COMMENCES.
  7. ALL WORKMANSHIP AND MATERIALS TO BE IN ACCORDANCE WITH THE SPECIFICATION REFER TO DOCUMENT AND GENERAL NOTES DRAWING 16051-01.
  8. THIS DRAWING SHOULD BE READ IN CONJUNCTION WITH ALL OTHER CONTRACT DOCUMENTS, DRAWINGS AND SPECIFICATIONS.
  9. STEELWORK PROTECTION HOT DIPPED GALVANISED, EPOXY PAINT PRIMER, INTERMEDIATE AND TOPCOAT TO SPEC CLAUSE G10/600, G10/620, G10/660.
  10. ALL FASTNERS TO BE HOT DIPPED GALVANISED OR STAINLESS STEEL.
  11. ALL STEEL COMPONENTS TO BE FINISHED FREE FROM SHARP EDGES OR PROJECTIONS.
  12. ALL WELDS AND SURROUNDING AREAS TO STAINLESS STEEL TO BE CLEANED FREE FROM BURNS OR SCORCH MARKING AFTER WELDING COMPLETE.
  13. PARAPET POSTS TO BE PERPENDICULAR TO THE BRIDGE DECK .
  14. HORIZONTAL RAILS ARE TO BE CURVED IN ELEVATION AND PLAN TO FOLLOW THE PROFILE OF THE BRIDGE DECK.
  15. THE CONTRACTOR IS TO ERECT A SAMPLE PANEL OF THE PARAPET (3 POSTS AND HANDRAIL COMPLETE ON SITE FOR THE ENGINEERS APPROVAL PRIOR TO COMMENCEMENT. THE PARAPET SHALL INCLUDE A SAMPLE LIGHT UNIT WITH ALL ELECTRICAL COMPONENTS SHALL BE WIRED AS PROPOSED FOR THE WORKS.
  16. JOINTS IN DUCTS TO BE SEALED DRAW ROPES TO BE PROVIDED IN ALL DUCTS IN ACCORDANCE WITH THE SPECIFICATION.



**LONGTITUDINAL SECTION A-A**

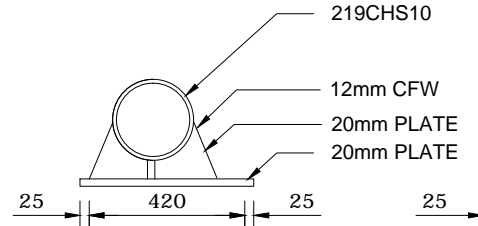
SCALE 1:50 (A1) 1:100 (A3)

- QUANTITIES**
- A. BRIDGE 7.5 TONNE STEELWORK INCLUDING 10% FOR CONNECTIONS
  - B. 70 SQ.M SURFACE AREA FOR PAINTING

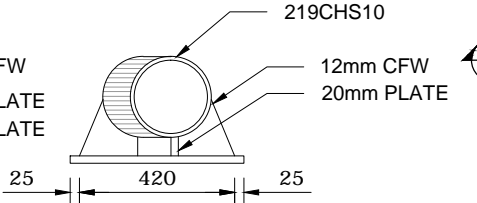


**SECTION A-A**

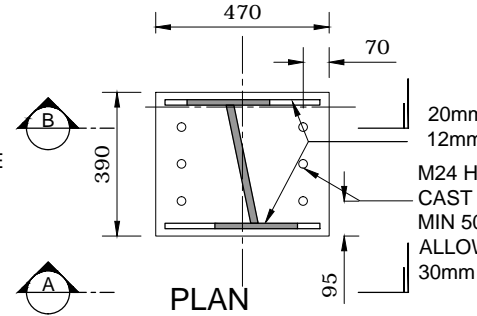
SCALE 1:20 (A1) 1:40 (A3)



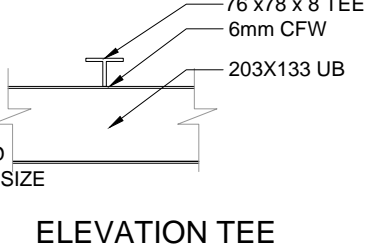
**SECTION A-A BASEPLATE**



**SECTION B-B BASEPLATE**



**PLAN SUPPORT BEARING**



**ELEVATION TEE**

© Copyright Killian Consulting Engineers  
 \*Copyright and ownership of this drawing is vested in Killian Consulting Engineers, whose prior written consent is required for its use, reproduction or for publication to any third party. All rights reserved by the law of copyright and by international copyright conventions are reserved to Killian Consulting Engineers, and may be protected by court proceedings for damages and/or injunctions and costs.\*

Revision	Description	Date	Revision	Description	Date

**TENDER**

Drawing No:	16051-T06	Rev:		Project:	CAMLIN FOOTBRIDGE
Drawn By:	CF	Checked By:	JK	Approved By:	JK
Date:	05.05.2017	Scale:	1:50 A1	Client:	LONGFORD COUNTY COUNCIL
Discipline:	PRELIMINARY PLANNING / STRUCTURAL / FIRE CERT / TENDER	Construction:	CONSTRUCTION / STRUCTURAL REINFORCEMENT	Drawing Title:	BRIDGE STEELWORK PLAN & DETAILS

**KILLIAN CONSULTING ENGINEERS**  
 NORTHGATE STREET, ESTATE, ATHLONE, CO. WESTMEATH, IRELAND. PHONE: 090 6477201. FAX: 090 6477202. WWW: www.killian.ie