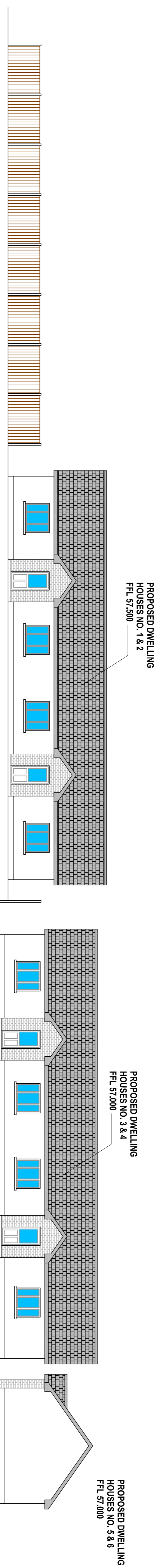


**CONTINUOUS ELEVATION (taken from Tefia Park road)**



**CONTINUOUS ELEVATION (taken within the development)**

**Notes:**  
 1. All drawings are Copyright of Cunningham Design & Planning Limited.  
 2. Use of any drawings, or any part thereof, without the written consent of Cunningham Design & Planning is strictly prohibited.  
 3. The drawings are to be used only for the purposes specified in the title block.  
 4. The drawings are to be used only for the purposes specified in the title block.  
 5. Refer to The Commission of The Development, LIA The Consultant in Relation To Compliance With Technical Guidance Document Part L Of The Building Regulations.

| REV | DESCRIPTION | BY | DATE |
|-----|-------------|----|------|
|     |             |    |      |
|     |             |    |      |
|     |             |    |      |
|     |             |    |      |
|     |             |    |      |

**CUNNINGHAM DESIGN&PLANNING**  
 www.cunninghamdp.com

Block 10, Mill Lane, Gurnea, Dublin 24, Ireland  
 Phone: +353 (0) 1 233 4400  
 Email: info@cunninghamdp.com

**WORKING WITH YOU FROM THE BEGINNING**

**Continuous Elevations**

| Dwg. No. | Drawn By  | Scale      | Status | Date     |
|----------|-----------|------------|--------|----------|
| 01A      | B. McHugh | 1:125 (A1) | Part 8 | OCT 2022 |

Job Number: 01A  
 Project: Proposed Residential Development, A.S. Rita's Park Road, Longford Co. Longford For Longford County Council