

KEY

- Application boundary
- Public realm boundary

Soft Landscape

- Proposed trees
- Proposed rain garden (P01)
- Proposed ornamental planting (P02)

Notes

For Hard Landscape Proposals see LUC drawings:-

- 12764-LUC-XX-XX-DR-L-01120
- 12764-LUC-XX-XX-DR-L-01121
- 12764-LUC-XX-XX-DR-L-01122
- 12764-LUC-XX-XX-DR-L-01123
- 12764-LUC-XX-XX-DR-L-01124
- 12764-LUC-XX-XX-DR-L-01125

OLD SCHOOLHOUSE
See architect's information for further detail

EXISTING PRIVATE DWELLING

REFER TO 12764-LUC-XX-XX-DR-L-01402

REFER TO 12764-LUC-XX-XX-DR-L-01404

Rev	Date	Description	Dim	CHK	App
P01	21.03.24	Planning Issue		AT	TJ

Scale 1:100

Do not scale from this drawing
All dimensions are to be verified on site
© Drawing & design copyright LUC

LUC www.landuse.co.uk

Project
**POBAL LE CHEILE PROJECT
BALLYMAHON**

Client
LONGFORD COUNTY COUNCIL

LUC Job Nr Scale @A1 Status
12764 1:100 S2 - INFORMATION

Drawing Title
**SOFT LANDSCAPE PLAN
SHEET 1 OF 4**

Drawing Nr	Rev
12764-LUC-XX-XX-DR-L-01401	P01



KEY

- Application boundary
- Public realm boundary

Soft Landscape

- Proposed trees
- Proposed rain garden
- Proposed ornamental planting

Notes

For Hard Landscape Proposals see LUC drawings:-

- 12764-LUC-XX-XX-DR-L-01120
- 12764-LUC-XX-XX-DR-L-01121
- 12764-LUC-XX-XX-DR-L-01122
- 12764-LUC-XX-XX-DR-L-01123
- 12764-LUC-XX-XX-DR-L-01124
- 12764-LUC-XX-XX-DR-L-01125

EXISTING PRIVATE DWELLING

DEAN EGAN YOUTH CENTRE
See architect's information for further detail

Rev	Date	Description	Drn	Chk	App
P01	21.03.24	Planning Issue		AT	TJ

Scale 1:100

Do not scale from this drawing
All dimensions are to be verified on site
© Drawing & design copyright LUC



Project
POBAL LE CHEILE PROJECT BALLYMAHON

Client
LONGFORD COUNTY COUNCIL

LUC Job Nr
12764

Scale @A1
1:100

Status
S2 - INFORMATION

Drawing Title
SOFT LANDSCAPE PLAN SHEET 2 OF 4

Drawing Nr
12764-LUC-XX-XX-DR-L-01402

Rev
P01



KEY

- Application boundary
- Public realm boundary

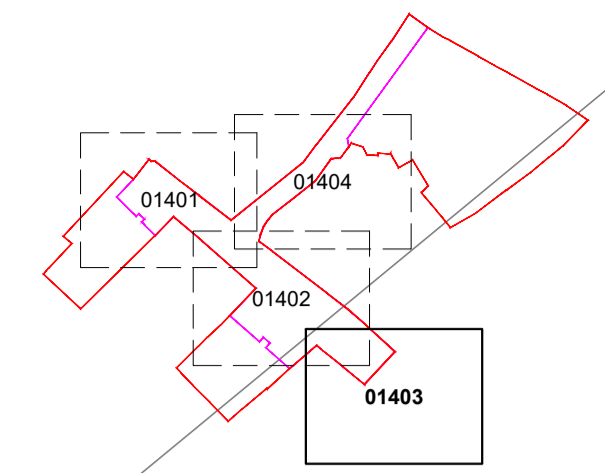
Soft Landscape

- Proposed trees
- Proposed rain garden
- Proposed ornamental planting

Notes

For Hard Landscape Proposals see LUC drawings:-

- 12764-LUC-XX-XX-DR-L-01120
- 12764-LUC-XX-XX-DR-L-01121
- 12764-LUC-XX-XX-DR-L-01122
- 12764-LUC-XX-XX-DR-L-01123
- 12764-LUC-XX-XX-DR-L-01124
- 12764-LUC-XX-XX-DR-L-01125

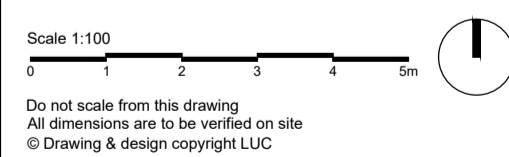


REFER TO 12764-LUC-XX-XX-DR-L-01402

LOVELLS HOMEVALUE
HARDWARE STORE

MERCY SECONDARY
SCHOOL DRIVE

Rev	Date	Description	Drn	Chn	App
P01	21/03/24	Planning Issue	AT	TJ	TJ



LUC www.landuse.co.uk

Project
POBAL LE CHEILE PROJECT
BALLYMAHON

Client
LONGFORD COUNTY COUNCIL

LUC Job Nr
12764

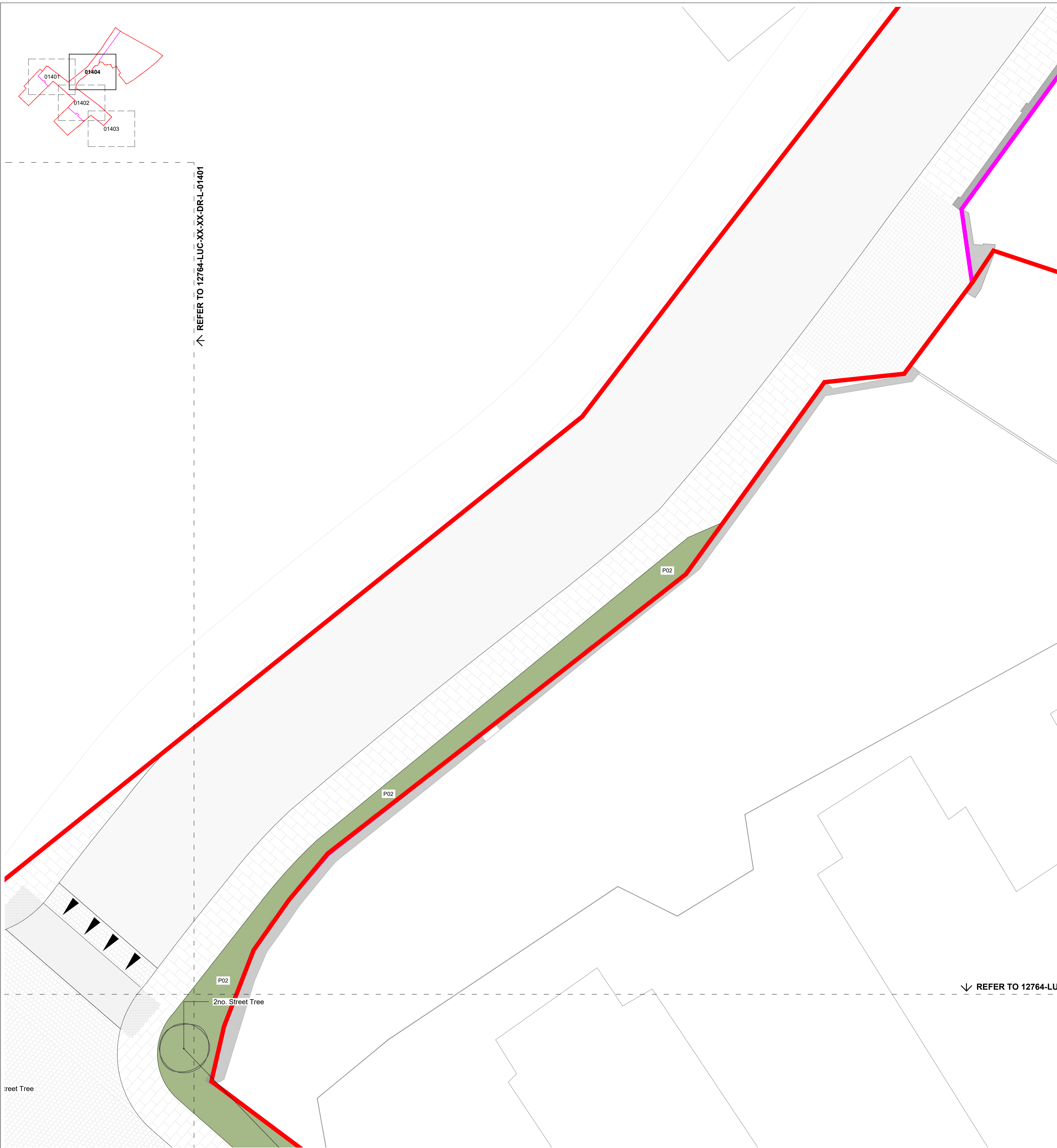
Scale @A1
1:100

Status
S2 - INFORMATION

Drawing Title
SOFT LANDSCAPE PLAN
SHEET 3 OF 4

Drawing Nr
12764-LUC-XX-XX-DR-L-01403

Rev
P01



↑ REFER TO 12764-LUC-XX-XX-DR-L-01401

↓ REFER TO 12764-LUC-XX-XX-DR-L-01402

Street Tree Species					
Botanical name	Common name	Height	Girth	Rootzone	Specification
<i>Alnus cordata</i>	Italian alder	4.0-4.5m	14-16cm	BR	Extra heavy standard; 3 breaks; 3x; RB; clear stem min. 200cm
<i>Alnus glutinosa</i>	Black alder	4.0-4.5m	14-16cm	BR	Extra heavy standard; 3 breaks; 3x; RB; clear stem min. 200cm
<i>Betula nigra</i>	River birch	4.0-4.5m	14-16cm	BR	Extra heavy standard; 3 breaks; 3x; RB; clear stem min. 200cm
<i>Betula pubescens</i>	Downy birch	4.0-4.5m	14-16cm	BR	Extra heavy standard; 3 breaks; 3x; RB; clear stem min. 200cm

Ornamental Tree Species					
Botanical name	Common name	Height	Girth	Rootzone	Specification
<i>Betula ermanii</i>	Eрман's birch	3.0-4.0m	12-14cm	BR	Heavy standard; 3 breaks; 3x; RB; multi-stem
<i>Prunus avium 'Plena'</i>	Double gean	3.0-4.0m	12-14cm	BR	Heavy standard; 3 breaks; 3x; RB; multi-stem
<i>Prunus cerasifera 'Nigra'</i>	Canadian plum	3.0-4.0m	12-14cm	BR	Heavy standard; 3 breaks; 3x; RB; multi-stem
<i>Sorbus aucuparia</i>	Rowan	3.0-4.0m	12-14cm	BR	Heavy standard; 3 breaks; 3x; RB; multi-stem

Rain Garden Planting Mix					
Botanical name	Common name	Height	Pot size	Density	Specification
<i>Aster azureus</i>	Sky blue aster		3L	5/m ²	Full pot, fully rooted pot, healthy crown
<i>Astilbe 'Fanal'</i>	False goat beard		3L	5/m ²	Full pot, fully rooted, healthy crown
<i>Calamagrostis 'Karl Foerster'</i>	Feather reed grass		3L	5/m ²	Full pot, fully rooted, healthy clump
<i>Deschampsia cespitosa</i>	Tufted hairgrass		3L	5/m ²	Full pot, fully rooted, healthy clump
<i>Euphorbia amygdaloides var. robbiae</i>	Mrs Robb's bonnet		3L	5/m ²	Full pot, fully rooted, healthy crown
<i>Fatsia japonica</i>	Japanese aralia	80-100cm	5L	3/m ²	Full pot, branched, min. 3 breaks
<i>Hamamelis virginiana</i>	American witch-hazel	80-100cm	5L	3/m ²	Full pot, branched, min. 3 breaks
<i>Helenium 'Moerheim Beauty'</i>	Sneezeweed		3L	5/m ²	Full pot, fully rooted, healthy crown
<i>Heuchera micrantha 'Palace Purple'</i>	Heuchera 'Palace Purple'		3L	5/m ²	Full pot, fully rooted, healthy crown
<i>Hydrangea quercifolia</i>	Oak-leaved hydrangea	30-40cm	3L	5/m ²	Full pot, fully rooted, several shoots
<i>Liatris spicata</i>	Dense blazing star		3L	5/m ²	Full pot, fully rooted, healthy crown
<i>Ligularia stenocephala 'The Rocket'</i>	Ligularia 'The Rocket'		3L	5/m ²	Full pot, fully rooted, healthy crown
<i>Luzula nivea</i>	Snowy nivea		3L	5/m ²	Full pot, fully rooted, healthy clump
<i>Lysimachia vulgaris</i>	Garden loosestrife		3L	5/m ²	Full pot, fully rooted, healthy crown
<i>Mahonia x media 'Charity'</i>	Oregon grape 'Charity'	60-80cm	5L	3/m ²	Full pot, branched, min. 3 break
<i>Miscanthus sinensis</i>	Chinese silver grass		3L	5/m ²	Full pot, fully rooted, healthy clump
<i>Molinia caerulea</i>	Purple moor grass		3L	5/m ²	Full pot, fully rooted pot, healthy clump
<i>Phlomis fruticosa</i>	Jerusalem sage	20-30cm	3L	5/m ²	Full pot, fully rooted, healthy crown
<i>Rudbeckia fulgida sullivanii 'Goldstrum'</i>	Coneflower 'Goldstrum'		3L	5/m ²	Full pot, fully rooted, healthy crown
<i>Salix lanata</i>	Woolly willow	30-40cm	3L	5/m ²	Full pot, branched, min. 3 breaks
<i>Veronica spicata</i>	Spiked speedwell		3L	5/m ²	Full pot, fully rooted pot, healthy crown
<i>Viburnum opulus 'Compactum'</i>	Compact guelder rose	30-40cm	3L	5/m ²	Full pot, branched, min. 3 breaks

Ornamental Planting Mix					
Botanical name	Common name	Height	Pot size	Density	Specification
<i>Aster amellus</i>	Italian aster		3L	5/m ²	Full pot, fully rooted pot, healthy crown
<i>Calamagrostis brachytricha</i>	Korean feather reed grass		3L	5/m ²	Full pot, fully rooted pot, healthy crown
<i>Caryopteris x clandonensis 'Heavenly Blue'</i>	Blue beard 'Heavenly Blue'	30-40cm	3L	5/m ²	Full pot, fully rooted pot, healthy crown
<i>Cistus purpureus</i>	Orchid rockrose	30-40cm	3L	5/m ²	Full pot, fully rooted pot, healthy crown
<i>Daphne x burkwoodii</i>	Burkwood daphne	30-40cm	3L	5/m ²	Full pot, fully rooted pot, healthy crown
<i>Echinacea purpurea</i>	Purple coneflower		3L	5/m ²	Full pot, fully rooted pot, healthy crown
<i>Genista hispanica</i>	Spanish gorse	30-40cm	3L	5/m ²	Full pot, fully rooted pot, healthy crown
<i>Hypericum moserianum</i>	St. John's wort	15-20cm	3L	5/m ²	Full pot, fully rooted pot, healthy crown
<i>Hyssopus officinalis</i>	Hyssop	20-30cm	3L	5/m ²	Full pot, fully rooted pot, healthy crown
<i>Lonicera nitida 'May Green'</i>	Honeysuckle 'May Green'	30-40cm	3L	5/m ²	Full pot, fully rooted pot, healthy crown
<i>Luzula sylvatica</i>	Great wood-rush		3L	5/m ²	Full pot, fully rooted pot, healthy clump
<i>Lychnis coronaria</i>	Rose campion		3L	5/m ²	Full pot, fully rooted pot, healthy crown
<i>Miscanthus sinensis 'Zerbrinus'</i>	Zebra grass		3L	5/m ²	Full pot, fully rooted pot, healthy clump
<i>Perovskia 'Blue Spire'</i>	Salvia 'Blue Spire'	30-40cm	3L	5/m ²	Full pot, fully rooted pot, healthy crown
<i>Persicaria 'Pink Elephant'</i>	Mountain fleecflower		3L	5/m ²	Full pot, fully rooted pot, healthy crown
<i>Phlox amplifolia</i>	Phlox		3L	5/m ²	Full pot, fully rooted pot, healthy crown
<i>Physocarpus opulifolius 'Dart's Gold'</i>	Golden ninebark	30-40cm	3L	5/m ²	Full pot, fully rooted pot, healthy crown
<i>Pittosporum tenuifolium 'Tom Thumb'</i>	Pittosporum 'Tom Thumb'	30-40cm	3L	5/m ²	Full pot, fully rooted pot, healthy crown
<i>Rudbeckia grandiflora</i>	Tall coneflower		3L	5/m ²	Full pot, fully rooted pot, healthy crown
<i>Salvia nemorosa 'Cardonna'</i>	Balkan clary		3L	5/m ²	Full pot, fully rooted pot, healthy crown
<i>Stipa tenuissima</i>	Mexican feather grass		3L	5/m ²	Full pot, fully rooted pot, healthy clump

KEY

- Application boundary
- Public realm boundary

Soft Landscapes

- Proposed trees
- Proposed rain garden
- Proposed ornamental planting

Notes

For **Hard Landscape Proposals** see LUC drawings:-

- 12764-LUC-XX-XX-DR-L-01120
- 12764-LUC-XX-XX-DR-L-01121
- 12764-LUC-XX-XX-DR-L-01122
- 12764-LUC-XX-XX-DR-L-01123
- 12764-LUC-XX-XX-DR-L-01124
- 12764-LUC-XX-XX-DR-L-01125

P01 21.03.24 Planning Issue AT TJ TJ

Rev	Date	Description	Drn	Chn	App

Scale 1:100

Do not scale from this drawing
All dimensions are to be verified on site
© Drawing & design copyright LUC

LUC www.landuse.co.uk

Project
**POBAL LE CHEILE PROJECT
BALLYMAHON**

Client
LONGFORD COUNTY COUNCIL

LUC Job No: 12764 Scale: @A1 Status: S2 - INFORMATION

Drawing Title
**SOFT LANDSCAPE PLAN
SHEET 4 OF 4**

Drawing No: 12764-LUC-XX-XX-DR-L-01404 Rev: P01