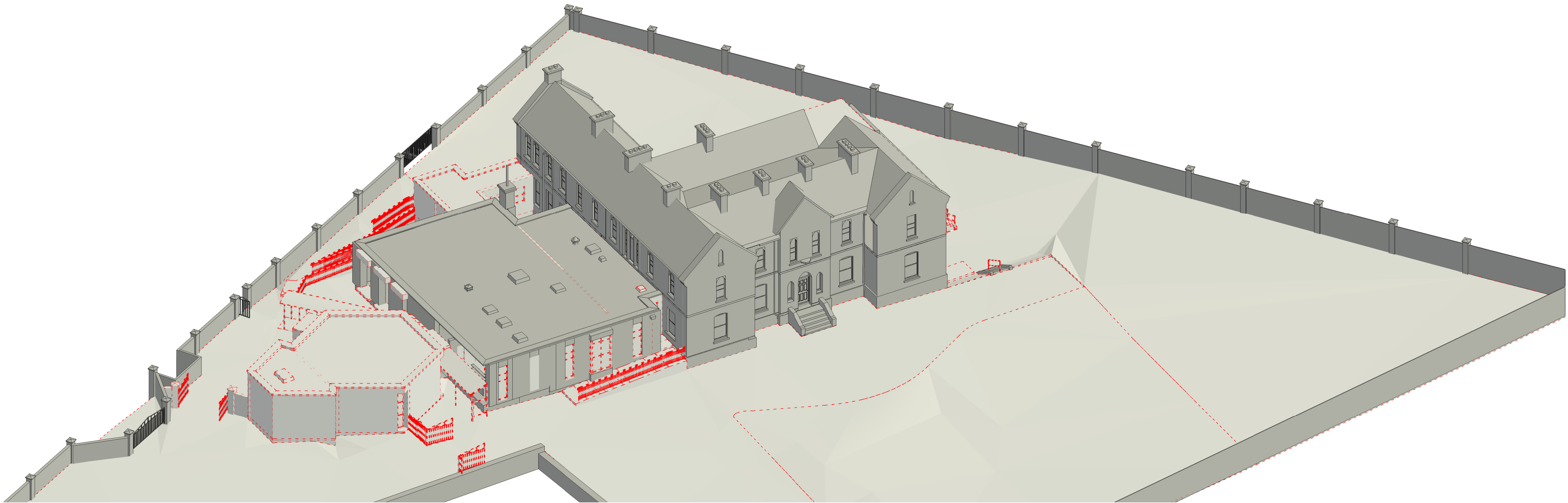




3D VIEW 02 DEMO

-01 BASEMENT FLOOR DEMO
1 : 100



3D VIEW 01 DEMO


LEGEND

-  EXISTING ELEMENTS TO BE DEMOLISHED
-  EXISTING ELEMENTS TO REMAIN

P02	15.05.25	EOB	ISSUED FOR PLANNING
P01	21-03-24	MZ	ISSUED FOR PLANNING

Revision Number	Revision Date	Issued by	Revision Description
-----------------	---------------	-----------	----------------------

Use figured dimensions only. All dimensions to be checked on site.
Architects to be informed immediately of any discrepancies before work commences on site
This drawing and any design hereon is copyright of Kenny Lyons & Associates Architects and must not be reproduced in whole or in part without their prior consent.



KENNY LYONS
Associates
Architects

Block 6
Central Business Park
Clonminch
Tullamore
Co. Offaly

Tel: 087 9324241
Fax: 087 8511345
office@kennylyons.ie

Project: POBAIL LE CHEILE REGENERATION PROJECT

Site: MAIN STREET, BALLYMAHON, CO. LONGFORD

Client: LONGFORD COUNTY COUNCIL

Title: FORMER CONVENT -
DEMOLITION BASEMENT
FLOOR & 3D VIEWS

Date: 16.05.2025


Scale: As indicated

Drawn By: MZ


Checked: JB

Rev: P02

PART VIII SUBMISSION



AN LONG FORT
CONNECTED



Rev: P02

A1 (c) 2025