

**Appropriate Assessment
Screening Report and Determination for
Variation No. 3 of the Longford County
Development Plan 2015-2021**



**Planning Department
Longford County Council
Aras an Chontae
Great Water Street
Longford**

July 2017

1.0 INTRODUCTION

Longford County Council has prepared a Variation (no. 3) of the Longford County Development Plan 2015-2021. Longford County Council as the competent authority has conducted an Article 6(3) Appropriate Assessment Screening of the Variation. According to the Department of the Environment, Heritage and Local Government Guidelines, issued in December 2009 and updated in 2010, on the implementation of Article 6(3) of the Habitats Directive as transposed into Irish Law under the European Communities (Natural Habitats) Regulations, 1997 (G.I. 94/1997), screening is required to examine the potential effects of all projects or plans, either alone or in combination with other projects or plans, upon the conservation objectives of Natura 2000 sites. Where there is potential for significant or indeterminate effects on the conservation objectives of Natura 2000 sites (SACs and SPAs) as a result of the proposed plan or project, a Habitats Directive Appropriate Assessment must be conducted by the competent authority, based on objective scientific information in the form of a Natura Impact Statement.

Longford County Council has therefore undertaken a Stage 1 Appropriate Assessment Screening of Variation no. 3 of the Longford County Development Plan 2015-2021 to assess, in view of best scientific knowledge, if the proposed Draft Variation, individually or in combination with other plans and projects, would be likely to have a significant effect on the integrity of Natura 2000 sites.

2.0 DESCRIPTION OF VARIATION NO. 3

In accordance with Section 13 of the Planning and Development Act 2000 (as amended), Longford County Council as the component authority, has made Variation no. 3 to the Longford County Development Plan 2015-2021. The Variation consists under section '5.5.2.3 *Alternative Energy Developments*' of additional text relating to Government energy policy and legislation as follows:-

[The Government White Paper 'Ireland's Transition to a Low Carbon Energy Future 2015-2030'](#), published by the then Department of Communications, Energy and Natural Resources (now Department of Communications, Climate Action and

Environment) states that a low carbon future will involve “*moving to lower emissions fuels (e.g. moving from peat and coal to gas), and ultimately away from fossil fuels altogether...In the short to medium-term, the mix of non-renewables will shift away from more carbon-intensive fuels, like peat and coal, to lower-carbon fuels like natural gas*”. The Planning Guidelines for the Midland Region 2010-2022 promote the delivery of renewable energy throughout the Midland Region (Goal 8 and TIP33), and specifically as per Section 5.8.2 and Policy TIP 35, seek to promote the expansion of the existing gas network throughout the Midland Region’.

and the addition of the following related **Policy AED1**:-

‘New housing schemes and large developments in towns and villages will be encouraged to source their heating and energy requirements from the Natural Gas network where available’.

3.0 REASON FOR VARIATION NO. 3

Dealing with Climate Change means ensuring the efficient use of available energy and placing maximum priority on saving energy. Longford County Council has an important role in encouraging every individual and community within the County to play their respective part in promotion of climate protection. The reason for Variation no. 3 of the Longford County Development Plan 2015-2021 is in order to support on an ongoing basis the Government Programme for the development of energy policy and legislation through the implement of supporting policies, particularly those promoting use of low carbon energy sources such as natural gas, renewable energy sources, energy efficiency, sustainable transport and land use planning.

4.0 APPROPRIATE ASSESSMENT SCREENING ASSESSMENT

4.1 Desktop Study - European Sites in the likely Zone of Impact

Sites within a 15km radius of the area covered by the plan were identified. In addition, using the precautionary principle, Natura 2000 sites located outside the 15km buffer zone were taken into account and assessed for potential pathways for impact, particularly where hydrological connectivity could be established. There is no

potential for impacts on Natura 2000 Sites outside the 15km buffer, as there is no identifiable connectivity or pathways for significant effects. Appendix 1 shows all Natura 2000 sites in the vicinity of County Longford. Appendix 2 lists all Natura 2000 sites that were considered to be within the Likely Zone of Impact. The site synopses and conservation objectives of these sites, as per the National Parks and Wildlife Service website (www.npws.ie), were considered.

4.2 Likely Effects on European Sites

The assessment of likely effects of the Variation on Natura 2000 Sites covers the possibilities of the Variation and associated Policy impacting on Natura 2000 Sites, along with direct, indirect or secondary impacts. Significance indicators, as outlined by the European Commission (2002), are also addressed.

4.3 Description of any likely Direct, Indirect or Secondary Impacts on Natura 2000 Sites

This addresses any likely direct, indirect or secondary impacts of the Variation, both alone and in combination with other plans or projects, on the Natura 2000 Sites by virtue of the following criteria:

- i. size and scale
- ii. land-take
- iii. distance from the Natura 2000 sites or key features of the site
- iv. resource requirements
- v. emissions
- vi. excavations
- vii. transportation requirements
- viii. duration.

These are addressed accordingly:-

i. Size and Scale

Whilst the Variation covers the County Longford administrative area, the Policy is of a nature that it is unlikely to result in any negative impacts on any European site. In addition all such projects will be screened for the need to undertake Appropriate Assessment under Article 6 of the Habitats Directive and will also be required to

comply with statutory Environmental Impact Assessment requirements where relevant. No impacts as a result of size and scale are anticipated.

ii. Land-take

The policy is of a does not relate to a change in land use or the physical environment. The policy is of a strategic nature that does not specify a magnitude or location for future land use and development. The policy does not specify any land take. Where the Policy has the potential to influence any other plans or projects in a manner that could potentially impact on European Sites as a result of land-take any elements associated with its implementation will be subject to Appropriate Assessment (or Screening) where necessary. No impacts as a result of land-take are anticipated.

iii. Distance from the Natura 2000 Site or Key Features of the Site

The Variation is policy only and does not contain objectives or actions that influence other plans or projects that may potentially impact on European Sites.

iv. Resource Requirements

The Variation does not relate to a specific project or development where resource requirements are quantifiable. The Variation relates to a Policy in a broad nature and does not specify the location for future land use and development. The Variation does not have the potential to influence any other plans or projects in a manner that could potentially impact on European Sites as a result of resource requirement

v. Emissions

The inclusion of the policy in the Variation will not involve additional harmful emissions. Neither do they have the potential to influence any other plans or projects in a manner that could potentially impact on European Sites as a result of emissions

vi. Excavation Requirements

The Variation relates to policy and does not involve any excavations. Neither does it have the potential to influence any other plans or projects in a manner that could potentially impact on European Sites as a result of excavations.

vii. Transportation Requirements

The Variation does not relate to a specific project or development where transportation requirements are quantifiable. Neither does it have the potential to influence any other plans or projects in a manner that could potentially impact on European Sites as a result of transportation.

viii. Duration of Longford County Development Plan

The Longford County Development Plan runs from 2015-2021. As per the County Development Plan preparation a Stage 2 Appropriate Assessment was undertaken which concluded that the Plan will not affect the integrity of the Natura 2000 network. All recommendations made by the AA were integrated into the Plan. No further potential for impacts on European Sites have been identified as a result of Variation no. 3 and therefore no impacts are anticipated as a result on the duration of the Development Plan

The County Development Plan was also subject to Strategic Environmental Assessment (SEA) to ensure that environmental considerations were fully integrated into the plan during its preparation. The Longford County Development Plan 2015-2021 is subject to a number of high level environmental protection policies and objectives with which it must comply, including those which have been identified as Strategic Environmental Objectives (SEO'S) (Table 1). These were developed from international and national policies which generally govern environmental protection objectives. Such policies include those of various European Directives which have been transposed into Irish law and which are intended to be implemented within the Plan area.

**Table 1: Longford County Development Plan 2015-2021 - Strategic
Environmental Objectives**

B1	To ensure compliance with the Habitats and Birds Directives with regard to the protection of Natura 2000 Sites and Annexed habitats and species.
B2	To ensure compliance with Article 10 of the Habitats Directive with regard to the management of features of the landscape which - by virtue of their linear and continuous structure or their function act as stepping stones - are of major importance for wild fauna and flora and essential for the migration, dispersal and genetic exchange of wild species.
B3	To avoid significant impacts on relevant habitats, species, environmental features or other sustaining resources in Wildlife Sites and to ensure compliance with the Wildlife Acts 1976-2010 with regard to the protection of species listed on Schedule 5 of the principal act.
B4	To sustain existing sustainable rural management practices - and the communities who support them - to ensure the continuation of long established managed landscapes and the flora and fauna that they contain.
PHH1	To protect populations and human health from exposure to incompatible land uses.
S1	To avoid damage to the hydrogeological and ecological function of the soil resource in County Longford.
W1	To maintain and improve, where possible, the quality and status of surface waters.
W2	To prevent pollution and contamination of ground water.
W3	To comply as appropriate with the provisions of the Planning System and Flood Risk Management: Guidelines for Planning Authorities (DEHLG, 2009).
M1	To serve new development with adequate and appropriate waste water treatment.
M2	To serve new development with adequate drinking water that is both wholesome and clean.
M3	To reduce waste volumes, minimise waste to landfill and increase recycling and reuse.
C1	To reduce travel related emissions to air and to encourage modal change from car to more sustainable forms of transport.
CH1	To protect archaeological heritage including entries to the Record of Monuments and Places and/or their context.
CH2	To protect as appropriate architectural heritage including entries to the Record of Protected Structures and their context and Architectural Conservation Areas.
L1	To avoid significant adverse impacts on the landscape, especially with regard to protected views and prospects and broad zones including lakes, rivers, canals and deciduous woodlands.

As such the Variation will also be subject to a number of high level environmental protection policies and objectives with which it must comply. It is considered that the Variation will not involve any considerable impact outside the Strategic

Environmental Objectives identified in the Development Plan and that the associated mitigation measures detailed in the Development Plan will apply.

ix. Cumulative Impacts with other Projects or Plans

The Variation was considered in combination with other plans and projects in the area that could result in cumulative impacts on Natura 2000 sites. Other plans considered include:

- Roscommon County Development Plan 2014-2020
- Westmeath County development Plan 2014-2020
- Cavan County Development Plan 2014-2020
- Leitrim County Development Plan 2015-2021
- Shannon International River Basin Management Plan

No cumulative impacts are predicted as each plan has a range of environmental and natural heritage policy safeguards in place. These safeguards to protect the natural environment and European Sites will also apply to the proposed Variation. Therefore, as there will be no significant impacts, it is considered unlikely to influence other plans or projects in a manner that could result in effects on any European site.

4.4 Likely Changes to Natura 2000 Sites – European Commission Criteria 2001

Any likely changes to the Natura 2000 Sites are described below in Table 2 with reference to the following criteria outlined by the European Commission (2001): reduction of habitat area, disturbance to key species, habitat or species fragmentation, reduction in species density, changes in key indicators of conservation value (e.g. water quality etc.) and climate change.

Table 2: Likely Changes to Natura 2000 Sites

Reduction of Habitat Area	No reduction in habitat area is anticipated as a result of Variation no. 3 of the Longford County Development Plan 2015-2021
Disturbance to Key Species	No disturbance to key species is anticipated as a result of Variation no. 3 of the Longford County Development Plan 2015-2021
Habitat or Species Fragmentation	No habitat or species fragmentation is anticipated as a result of Variation no. 3 of the Longford County Development Plan 2015-2021
Reduction in Species Density	No reduction in species density is anticipated as a result of Variation no. 3 of the Longford County Development Plan 2015-2021
Changes in Key Indicators of Conservation Value	No changes in key indicators of conservation value are anticipated as a result of Variation no. 3 of the Longford County Development Plan 2015-2021
Climate Change	It is not anticipated that Variation no. 3 of the Longford County Development Plan 2015-2021 will result in significant impacts on climate change.

Given the Policy nature of the Variation it is considered that there will be no adverse effect on any Natura 2000 site. None of the qualifying species or habitats of any Natura 2000 Sites will be affected.

4.5 Indicators of Significance as a Result of the Identification of Effects

Indicators of significance are provided in Table 3 below for any impacts identified in terms of habitat loss, fragmentation, disruption to processes, disturbance to species and changes to key elements of the site.

Table 3: Indicators of Significance as a Result of the Identification of Effects

Loss	There will be no loss of habitat within any Natura 2000 site as a result of Draft Variation no. 3 of the Longford County Development Plan 2015-2021.
Fragmentation	There will be no habitat fragmentation within any Natura 2000 site as a result of Draft Variation no. 3 of the Longford County Development Plan 2015-2021.
Disruption	There will be no significant disruption to processes within any Natura 2000 site as a result of Draft Variation no. 3 of the Longford County Development Plan 2015-2021.
Disturbance	There will be no significant disturbance to fauna within any Natura 2000 site as a result of the Variation no. 3 of the Longford County Development Plan 2015-2021.
Changes to Key Elements of the Site	There will be no changes to key elements within any Natura 2000 site as a result of the Variation no. 3 of the Longford County Development Plan 2015-2021.

4.6 Significant Impacts or Indeterminate Impacts of the Plan on Natura 2000 Sites

No significant impacts are likely as a result of Draft Variation no. 3 of the Longford County Development Plan 2015-2021 on the conservation objectives of any Natura 2000 site.

4.7 Overall Findings

There are no elements of the proposed Variation that could give rise to impacts on the Natura 2000 sites considered. The Variation has been screened out for one or more of the following reasons:-

- The Variation is concerned with policy in terms of service delivery, co-ordination and / or promotion of networks.
- The policy is of a broad strategic nature that does not specify a quantum or location for future land use and development.

- Any extension of the gas network would be subject to the appropriate planning process and associated consideration in relation to Appropriate Assessment issues.

5.0 ARTICLE 6(3) SCREENING STATEMENT AND CONCLUSIONS

The findings of this Screening Assessment are presented following the European Commission guidance and the Department of the Environment, Heritage and Local Government (European Commission, 2001; DEHLG, 2009; 2010).

Name and Location of Natura 2000 sites

The location of Natura 2000 Sites within the 15km buffer of the Longford County Development Plan 2015-2021 is shown in Appendix 1. The distances of Natura 200 sites from the area of interest are provided in Appendix 2.

Description of Project

The Appropriate Assessment Screening Report related to Variation no. 3 of the Longford County Development Plan 2015-2021.

Is the plan directly connected with or necessary to the management of Natura 2000 sites?

- No

Are there any plans or projects that together with the plan being assessed could affect Natura 2000 sites?

- No, on the basis that the plan as proposed Variation will have no significant impacts on any Natura 2000 sites. Therefore, cumulative impacts are not anticipated.

5.1 Assessment of Significance of Effects

Describe how the project is likely to affect Natura 2000 sites

The Variation as proposed will not significantly affect any Natura 2000 sites.

Explain why these effects are not considered significant

There is no element of Variation no. 3 of the Longford County Development Plan 2015-2021 that could give rise to impacts on Natura 2000 sites. The Variation has been screened out for one or more of the following reasons:-

- The Variation is concerned with policy, in terms of service delivery, co-ordination and / or promotion of networks.
- The policy is of a broad strategic nature that does not specify a quantum or location for future land use and development.
- Any extension of the gas network would be subject to the appropriate planning process and associated consideration in relation to Appropriate Assessment issues.

6.0 CONCLUSION

The Longford County Development Plan runs from 2015-2021. As per the County Development Plan preparation a Stage 2 Appropriate Assessment was undertaken alongside the preparation of the Plan. The AA concluded that the Plan will not affect the integrity of the Natura 2000 network. All recommendations made by the AA were integrated into the Plan. No further potential for impacts on European Sites have been identified as a result of Variation no. 3 and therefore no impacts are anticipated as a result of the duration of the Plan.

The Appropriate Assessment screening of the Draft Variation no. 3 of the Longford County Development Plan 2015-2021 concludes that implementation of the Plan does not have the potential to give rise to impacts on the conservation objectives of any Natura 2000 site, or to influence other plans or projects in a manner that could potentially impact thereon. The Draft Variation therefore does not require a Stage 2 Appropriate Assessment under the Habitats Directive.

A Screening Determination is provided overleaf:

**Appropriate Assessment (AA) Screening Determination under:
The Planning and Development Acts 2000 Act (as amended):
Variation No. 3 to the Longford County Development Plan 2015-2021**

Section 12 (7) of the Planning and Development Act 2000 (as amended), requires, inter alia, a determination to be made as to whether Proposed Variation No. 3 warrants the undertaking of AA. An Appropriate Assessment (AA) Screening determination has been made by Longford County Council regarding Proposed Variation No. 3 to the Longford County Development Plan 2015-2021.

The Variation incorporates the following under section '5.5.2.3 *Alternative Energy Developments*' into the County Development Plan:

- additional text relating to Government energy policy and legislation;
- addition of the following related **Policy AED1:-**

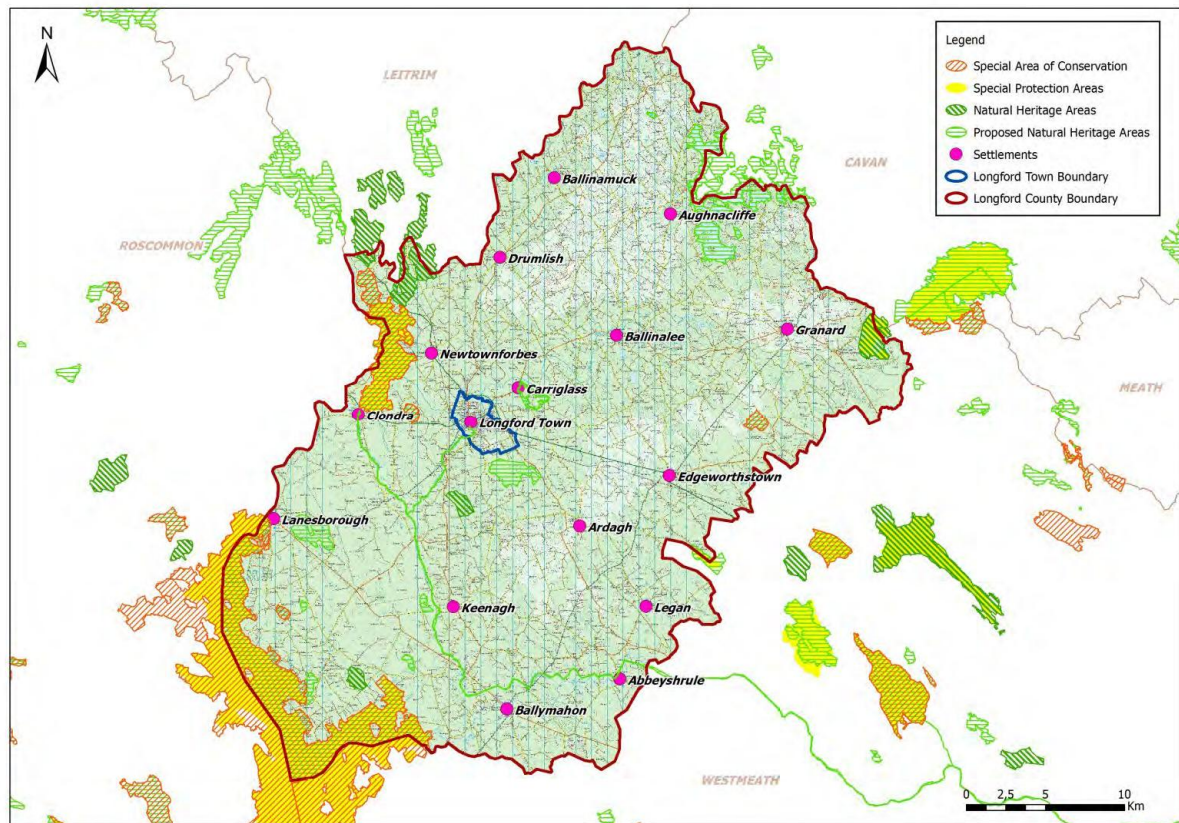
'New housing schemes and large developments in towns and villages will be encouraged to source their heating and energy requirements from the Natural Gas network where available'.

The Variation has been screened out for the following reasons:-

- The Variation is concerned with policy, in terms of service delivery, co-ordination and/or promotion of networks.
- The policy is of a broad strategic nature that does not specify a quantum or location for future land use and development.
- Any extension of the gas network would be subject to the appropriate planning process and associated consideration in relation to Appropriate Assessment issues.
- The Variation does not have the potential to result in impacts on any European sites or to influence other plans or projects in a manner that could potentially impact thereon, and therefore does not require a Stage 2 Appropriate Assessment under the Habitats Directive.
- Taking into account the measures that have been integrated into the County Development Plan, including those that were integrated through the AA process, the Stage 2 AA for the County Development Plan concluded that the Plan will not affect the integrity of the Natura 2000 network.

Taking all of the above into account, it is determined that the Variation will not affect the integrity of the Natura 2000 network of sites. Consequently further assessment is not required.

Appendix 1 - Natura 2000 sites within and in the vicinity of County Longford



Appendix 2 Natura 2000 Sites within the Likely Zone of Impact of Variation no. 3 of the Longford County Development Plan 2015-2021

This lists all Natura 2000 Sites that were considered to be within the Likely Zone of Impact. This includes a 15km Buffer Zone Special Protection Area Special Area of Conservation around the boundaries of County Longford. The site synopses and conservation objectives of these sites, as per the National Parks and Wildlife Service website (www.npws.ie), were considered at the time of preparation of this report (March, 2017)

Lough Ree SAC (000440)	<i>County Longford</i>
Distance from County Boundary	0km (southwest)
Qualifying Interests / Special Conservation Interests	<ul style="list-style-type: none"> • Natural eutrophic lakes with Magnopotamion or Hydrocharition – type vegetation [3150] • Semi-natural dry grasslands and scrubland facies on calcareous substrates (Festuco-Brometalia) (* important orchid sites) [6210] • Degraded raised bogs still capable of natural regeneration [7120] • Alkaline fens [7230] • Limestone pavements [8240] • Old sessile oak woods with Ilex and Blechnum in the British Isles [91A0] • Bog woodland [91D0] • Lutra lutra (Otter) [1355]
Generic Conservation Objective	To maintain or restore the favourable conservation condition of the Annex I habitat(s) and/or the Annex II species for which the SAC has been selected

Fortwilliam Turlough SAC (000448)	<i>County Longford</i>
Distance from County Boundary	0km (southwest)
Qualifying Interests / Special Conservation Interests	<ul style="list-style-type: none"> • Turloughs [3180]
Generic conservation objective	To maintain or restore the favourable conservation condition of the Annex I habitat(s) and/or the Annex II species for which the SAC has been selected

Lough Forbes Complex SAC (001818)	<i>County Longford</i>
Distance from County Boundary	0km (west)
Qualifying Interests / Special Conservation Interests	<ul style="list-style-type: none"> • Natural eutrophic lakes with Magnopotamion or Hydrocharition – type vegetation [3150] • Active raised bogs [7110] • Degraded raised bogs
Generic conservation objective	To maintain or restore the favourable conservation condition of the Annex I habitat(s) and/or the Annex II species for which the SAC has been selected.

Ardagullion Bog SAC (002341)	<i>County Longford</i>
Distance from County Boundary	0km east
Qualifying Interests / Special Conservation Interests	<ul style="list-style-type: none"> • Degraded raised bogs still capable of natural regeneration [7120] • Depressions on peat substrates of the Rhynchosporion [7150] • Bog Woodland.
Conservation Objectives	Detailed conservation objectives at www.npws.ie

Brown Bog SAC (002346)	<i>County Longford</i>
Distance from County Boundary	0km(west) Longford
Qualifying Interests / Special Conservation Interests	<ul style="list-style-type: none"> • Active raised bogs [7110] • Degraded raised bogs still capable of natural regeneration [7120] • Depressions on peat substrates of the Rhynchosporion [7150]
Conservation Objectives	Detailed conservation objectives at www.npws.ie

Clooneen Bog SAC (002348)	<i>County Longford</i>
Distance from County Boundary	0km (west)
Qualifying Interests / Special Conservation Interests	<ul style="list-style-type: none"> • Degraded raised bogs still capable of natural regeneration [7120] • Depressions on peat substrates of the Rhynchosporion [7150] • Bog woodland [91D0]
Generic Conservation Objective	To maintain or restore the favourable conservation condition of the Annex I habitat(s) and/or the Annex II species for which the SAC has been selected

Moneybeg And Clareisland Bogs SAC (002340)	Westmeath/Meath
Distance from County Boundary	1.0km north east
Qualifying Interests / Special Conservation Interests	<ul style="list-style-type: none"> • Active raised bogs [7110] • Degraded raised bogs still capable of natural regeneration [7120] • Depressions on peat substrates of the <i>Rhynchosporion</i> [7150]
Conservation Objectives	Detailed conservation objectives at www.npws.ie

Corbo Bog SAC (002349)	Roscommon
Distance from County Boundary	3.0km south west
Qualifying Interests / Special Conservation Interests	<ul style="list-style-type: none"> • Active raised bogs [7110] • Degraded raised bogs still capable of natural regeneration [7120] • Depressions on peat substrates of the <i>Rhynchosporion</i> [7150]
Conservation Objectives	Detailed conservation objectives at www.npws.ie

Garriskil Bog SAC (000679)	Westmeath
Distance from County Boundary	3.8km east
Qualifying Interests / Special Conservation Interests	<ul style="list-style-type: none"> • Active raised bogs [7110] • Active raised bogs [7110] • Degraded raised bogs still capable of natural regeneration [7120] • Depressions on peat substrates of the <i>Rhynchosporion</i> [7150]
Conservation Objectives	Detailed conservation objectives at www.npws.ie

Ballymore Fen SAC (002313)	Westmeath
Distance from County Boundary	4.3km south east
Qualifying Interests / Special Conservation Interests	<ul style="list-style-type: none"> • Transition mires and quaking bogs [7140]
Generic conservation objective	To maintain or restore the favourable conservation condition of the Annex I habitat(s) and/or the Annex II species for which the SAC has been selected

Lough Oughter And Associated Loughs SAC (000007)	Cavan
Distance from County Boundary	6.4km north
Qualifying Interests / Special Conservation Interests	<ul style="list-style-type: none"> • Natural eutrophic lakes with Magnopotamion or Hydrocharition – type vegetation [3150] • Bog woodland [91D0] • Lutra lutra (Otter) [1355]
Generic conservation objective	To maintain or restore the favourable conservation condition of the Annex I habitat(s) and/or the Annex II species for which the SAC has been selected

Lough Funshinagh SAC (000611)	Roscommon
Distance from County Boundary	7.4km south west
Qualifying Interests / Special Conservation Interests	<ul style="list-style-type: none"> • Turloughs [3180]
Generic conservation objective	To maintain or restore the favourable conservation condition of the Annex I habitat(s) and/or the Annex II species for which the SAC has been selected

Lough Owel SAC (000688)	Westmeath
Distance from County Boundary	8.7km southeast
Qualifying Interests / Special Conservation Interests	<ul style="list-style-type: none"> • Hard oligo-mesotrophic waters with benthic vegetation of Chara spp. [3140] • Transition mires and quaking bogs [7140] • Alkaline fens [7230] • Austropotamobius pallipes (White-clawed Crayfish) [1092]
Generic conservation objective	To maintain or restore the favourable conservation condition of the Annex I habitat(s) and/or the Annex II species for which the SAC has been selected

White Lough, Ben Loughs and Lough Doo SAC (001810)	Westmeath
Distance from County Boundary	10.3km north east
Qualifying Interests / Special Conservation Interests	<ul style="list-style-type: none"> • Hard oligo-mesotrophic waters with benthic vegetation of Chara spp. [3140] • Austropotamobius pallipes (White-clawed Crayfish) [1092]
Generic conservation objective	To maintain or restore the favourable conservation condition of the Annex I habitat(s) and/or the Annex II species for which the SAC has been selected

Lough Lene SAC (002121)	Westmeath
Distance from County Boundary	11.0km east
Qualifying Interests / Special Conservation Interests	<ul style="list-style-type: none"> • Hard oligo-mesotrophic waters with benthic vegetation of Chara spp. [3140] • Austropotamobius pallipes (White-clawed Crayfish) [1092]
Generic conservation objective	To maintain or restore the favourable conservation condition of the Annex I habitat(s) and/or the Annex II species for which the SAC has been selected

Ballynamona Bog And Corkip Lough SAC (002339)	Roscommon
Distance from County Boundary	11.4km south west
Qualifying Interests / Special Conservation Interests	<ul style="list-style-type: none"> • Turloughs [3180] • Active raised bogs [7110] • Degraded raised bogs still capable of natural regeneration [7120] • Depressions on peat substrates of the Rhynchosporion [7150] • Bog woodland [91D0]
Generic conservation objective	To maintain or restore the favourable conservation condition of the Annex I habitat(s) and/or the Annex II species for which the SAC has been selected

River Shannon Callows SAC (000216)	Westmeath/ Roscommon
Distance from County Boundary	11.7km South
Qualifying Interests / Special Conservation Interests	<ul style="list-style-type: none"> • Molinia meadows on calcareous, peaty or clayey-silt-laden soils (Molinion caeruleae) [6410] • Lowland hay meadows (Alopecurus pratensis, Sanguisorba officinalis) [6510] • Limestone pavements [8240] • Alluvial forests with Alnus glutinosa and Fraxinus excelsior (Alno-Padion, Alnion incanae, Salicion albae) [91E0] • Lutra lutra (Otter) [1355]
Generic conservation objective	To maintain or restore the favourable conservation condition of the Annex I habitat(s) and/or the Annex II species for which the SAC has been selected

Carn Park Bog SAC(002336)	Westmeath
Distance from County Boundary	11.7km south
Qualifying Interests / Special Conservation Interests	<ul style="list-style-type: none"> • Active raised bogs [7110] • Degraded raised bogs still capable of natural regeneration [7120]
Conservation Objectives	Detailed conservation objectives at www.npws.ie

Ballinturly Turlough SAC (000588)	Roscommon
Distance from County Boundary	12.0km south west
Qualifying Interests / Special Conservation Interests	<ul style="list-style-type: none"> • Turloughs [3180]
Generic conservation objective	To maintain or restore the favourable conservation condition of the Annex I habitat(s) and/or the Annex II species for which the SAC has been selected

Crosswood Bog SAC (002337)	Westmeath
Distance from County Boundary	13.0km south
Qualifying Interests / Special Conservation Interests	<ul style="list-style-type: none"> • Active raised bogs [7110] • Degraded raised bogs still capable of natural regeneration [7120]
Conservation Objectives	Detailed conservation objectives at www.npws.ie

Lough Croan Turlough SAC (000610)	Roscommon
Distance from County Boundary	13.0km south west
Qualifying Interests / Special Conservation Interests	<ul style="list-style-type: none"> • Turloughs [3180]
Generic conservation objective	To maintain or restore the favourable conservation condition of the Annex I habitat(s) and/or the Annex II species for which the SAC has been selected

Lough Bane And Lough Glass SAC (002120)	Westmeath
Distance from County Boundary	13.1km east
Qualifying Interests/ Special Conservation Interests	<ul style="list-style-type: none"> • Hard oligo-mesotrophic waters with benthic vegetation of Chara spp. [3140] • Austropotamobius pallipes (White-clawed Crayfish) [1092]
Generic conservation objective	To maintain or restore the favourable conservation condition of the Annex I habitat(s) and/or the Annex II species for which the SAC has been selected

Scragh Bog SAC (000692)	Westmeath
Distance from County Boundary	13.3km east
Qualifying Interests / Special Conservation Interests	<ul style="list-style-type: none"> • Transition mires and quaking bogs [7140] • Alkaline fens [7230] • Euphydrias aurinia (Marsh Fritillary) [1065] • Drepanocladus vernicosus (Slender Green Feather-moss) [1393]
Generic conservation objective	To maintain or restore the favourable conservation condition of the Annex I habitat(s) and/or the Annex II species for which the SAC has been selected

Annaghmore Lough (Roscommon) SAC (001626)	Roscommon
Distance from County Boundary	13.4km west
Qualifying Interests / Special Conservation Interests	<ul style="list-style-type: none"> • Alkaline fens [7230] • Vertigo geyeri (Geyer's Whorl Snail) [1013]
Generic conservation objective	To maintain or restore the favourable conservation condition of the Annex I habitat(s) and/or the Annex II species for which the SAC has been selected

Castlesampson Esker SAC (001625)	Roscommon
Distance from County Boundary	13.5km south west
Qualifying Interests / Special Conservation Interests	<ul style="list-style-type: none"> • Turloughs [3180] • Semi-natural dry grasslands and scrubland facies on calcareous substrates (Festuco-Brometalia) (* important orchid sites) [6210]
Generic conservation objective	To maintain or restore the favourable conservation condition of the Annex I habitat(s) and/or the Annex II species for which the SAC has been selected

Lisduff Turlough SAC (000609)	Roscommon
Distance from County Boundary	14.3km south west
Qualifying Interests / Special Conservation Interests	<ul style="list-style-type: none"> • Turloughs [3180]
Generic conservation objective	To maintain or restore the favourable conservation condition of the Annex I habitat(s) and/or the Annex II species for which the SAC has been selected.

Glen Lough SPA (004045)	
Distance from County Boundary	0km east Longford
Qualifying Interests / Special Conservation Interests	<ul style="list-style-type: none"> • Whooper Swan (Cygnus cygnus) [A038]
Generic conservation objective	To maintain or restore the favourable conservation condition of the Annex I habitat(s) and/or the Annex II species for which the SAC has been selected

Lough Kinale and Derragh Lough SPA (004061)	Longford
Distance from County Boundary	0km north east
Qualifying Interests / Special Conservation Interests	<ul style="list-style-type: none"> • Pochard (Aythya ferina) [A059] • Tufted Duck (Aythya fuligula) [A061] • Wetland and Waterbirds [A999]
Generic conservation objective	To maintain/restore the favourable conservation condition of the bird species listed as Special Conservation Interests for this SPA.
2 ND conservation objective	To maintain/restore the favourable conservation condition of the wetland habitat of the SPA as a resource for the regularly-occurring migratory waterbirds that utilise it

Lough Ree SPA(004064)	Longford
Distance from County Boundary	0km southwest
Qualifying Interests / Special Conservation Interests	<ul style="list-style-type: none"> • Little Grebe (<i>Tachybaptus ruficollis</i>) [A004] • Whooper Swan (<i>Cygnus cygnus</i>) [A038] • Wigeon (<i>Anas penelope</i>) [A050] • Teal (<i>Anas crecca</i>) [A052] • Mallard (<i>Anas platyrhynchos</i>) [A053] • Shoveler (<i>Anas clypeata</i>) [A056] • Tufted Duck (<i>Aythya fuligula</i>) [A061] • Common Scoter (<i>Melanitta nigra</i>) [A065] • Goldeneye (<i>Bucephala clangula</i>) [A067] • Coot (<i>Fulica atra</i>) [A125] • Golden Plover (<i>Pluvialis apricaria</i>) [A140] • Lapwing (<i>Vanellus vanellus</i>) [A142] • Common Tern (<i>Sterna hirundo</i>) [A193] • Wetland and Waterbirds [A999]
Generic conservation objective	To maintain or restore the favourable conservation condition of the bird species listed as Special Conservation Interests for this SPA
2 ND conservation objective	To maintain or restore the favourable conservation condition of the wetland habitat of the SPA as a resource for the regularly-occurring migratory waterbirds that utilise it.

Ballykenny-Fisherstown Bog SPA (004101)	Longford
Distance from County Boundary	0km west
Qualifying Interests / Special Conservation Interests	<ul style="list-style-type: none"> • Greenland White-fronted Goose (<i>Anser albifrons flavirostris</i>) [A395]
Generic conservation objective	To maintain or restore the favourable conservation condition of the bird species listed as Special Conservation Interests for this SPA

Lough Sheelin SPA(004065)	Cavan/Meath/Westmeath
Distance from County Boundary	1.3km north east
Qualifying Interests / Special Conservation Interests	<ul style="list-style-type: none"> • Great Crested Grebe (Podiceps cristatus)[A005] • Pochard (Aythya ferina) [A059] • Tufted Duck (Aythya fuligula) [A061] • Goldeneye (Bucephala clangula) [A067] • Wetland and Waterbirds [A999]
Generic conservation objective	Maintain/restore the favourable conservation condition of the bird species listed as Special Conservation Interests for this SPA
2 ND conservation objective	Maintain/restore the favourable conservation condition of the wetland habitat of the SPA as a resource for the regularly-occurring migratory waterbirds that utilise it

Garriskil Bog SPA (004102)	Westmeath
Distance from County Boundary	3.9km east
Qualifying Interests / Special Conservation Interests	<ul style="list-style-type: none"> • Greenland White-fronted Goose (Anseralbifrons flavirostris) [A395]
Generic conservation objective	To maintain or restore the favourable conservation condition of the bird species listed as Special Conservation Interests for this SPA

Lough Iron SPA (004046)	Westmeath
Distance from County Boundary	4.2km east
Qualifying Interests / Special Conservation Interests	<ul style="list-style-type: none"> • Whooper Swan (Cygnus cygnus) [A038] • Wigeon (Anas penelope) [A050] • Teal (Anas crecca) [A052] • Shoveler (Anas clypeata) [A056] • Coot (Fulica atra) [A125] • Golden Plover (Pluvialis apricaria) [A140] • Greenland White-fronted Goose (Anseralbifrons flavirostris) [A395] • Wetland and Waterbirds [A999]
Generic conservation objective	Maintain/restore the favourable conservation condition of the bird species listed as Special Conservation Interests for this SPA
2 ND conservation objective	Maintain/restore the favourable conservation condition of the wetland habitat of the SPA as a resource for the regularly-occurring migratory waterbirds that utilise it

Lough Derravaragh SPA (004043)	Westmeath
Distance from County Boundary	6.3km east
Qualifying Interests / Special Conservation Interests	<ul style="list-style-type: none"> • Whooper Swan (Cygnus cygnus) [A038] • Pochard (Aythya ferina) [A059] • Tufted Duck (Aythya fuligula) [A061] • Coot (Fulica atra) [A125] • Wetland and Waterbirds [A999]
Generic conservation objective	To maintain or restore the favourable conservation condition of the bird species listed as Special Conservation Interests for this SPA
2 ND conservation objective	To maintain or restore the favourable conservation condition of the wetland habitat of resource for the regularly-occurring migratory waterbirds that utilise it

Lough Owel SPA (004047)	Westmeath
Distance from County Boundary	8.7km south east
Qualifying Interests / Special Conservation Interests	<ul style="list-style-type: none"> • Shoveler (Anas clypeata) [A056] • Coot (Fulica atra) [A125] • Wetland and Waterbirds [A999]
Generic conservation objective	Maintain/restore the favourable conservation condition of the bird species listed as Special Conservation Interests for this SPA
2 ND conservation objective	Maintain/restore the favourable conservation condition of the wetland habitat of the SPA as a resource for the regularly-occurring migratory waterbirds that utilise it

Lough Oughter SPA (004049)	Cavan
Distance from County Boundary	8.8km north
Qualifying Interests / Special Conservation Interests	<ul style="list-style-type: none"> • Great Crested Grebe (Podiceps cristatus) [A005] • Whooper Swan (Cygnus cygnus) [A038] • Wigeon (Anas penelope) [A050] • Wetland and Waterbirds [A999]
Generic conservation objective	Maintain/restore the favourable conservation condition of the bird species listed as Special Conservation Interests for this SPA
2 ND conservation objective	Maintain/restore the favourable conservation condition of the wetland habitat of the SPA as a resource for the regularly-occurring migratory waterbirds that utilise it

Middle Shannon Callows SPA (004096)	Westmeath/ Roscommon
Distance from County Boundary	11.7km south
Qualifying Interests / Special Conservation Interests	<ul style="list-style-type: none"> • Whooper Swan (Cygnus cygnus) [A038] • Wigeon (Anas penelope) [A050] • Corncrake (Crex crex) [A122] • Golden Plover (Pluvialis apricaria) [A140] • Lapwing (Vanellus vanellus) [A142] • Black-tailed Godwit (Limosa limosa) [A156] • Black-headed Gull (Chroicocephalus ridibundus) [A179] • Wetland and Waterbirds [A999]
Generic conservation objective	To maintain or restore the favourable conservation condition of the bird species listed as Special Conservation Interests for this SPA
2 ND conservation objective	To maintain or restore the favourable conservation condition of the wetland habitat of the SPA as a resource for the regularly-occurring migratory waterbirds that utilise it

Lough Croan Turlough SPA (004139)	Roscommon
Distance from County Boundary	12.9km south west
Qualifying Interests / Special Conservation Interests	<ul style="list-style-type: none"> • Shoveler (Anas clypeata) [A056] • Golden Plover (Pluvialis apricaria) [A140] • Greenland White-fronted Goose (Anser albifrons flavirostris) [A395] • Wetland and Waterbirds [A999]
Generic conservation objective	To maintain or restore the favourable conservation condition of the bird species listed as Special Conservation Interests for this SPA
2 ND conservation objective	To maintain or restore the favourable conservation condition of the wetland habitat of the SPA as a resource for the regularly-occurring migratory waterbirds that utilise it

River Suck Callows SPA (004097)	Roscommon/ Galway
Distance from County Boundary	14.1km south west
Qualifying Interests / Special Conservation Interests	<ul style="list-style-type: none"> • Whooper Swan (<i>Cygnus cygnus</i>) [A038] • Wigeon (<i>Anas penelope</i>) [A050] • Golden Plover (<i>Pluvialis apricaria</i>) [A140] • Lapwing (<i>Vanellus vanellus</i>) [A142] • Greenland White-fronted Goose (<i>Anser albifrons flavirostris</i>) [A395] • Wetland and Waterbirds [A999]
Generic conservation objective	To maintain or restore the favourable conservation condition of the bird species listed as Special Conservation Interests for this SPA
2 ND conservation objective	To maintain or restore the favourable conservation condition of the wetland habitat of the SPA as a Resource for the regularly-occurring migratory waterbirds that utilise it